



Tawny Cottage Barthomley Road

ST7 8HT

£540,000



3



2



1



D



STEPHENSON BROWNE

WEALTH OF PERIOD FEATURES & BEAUTIFUL ADJACENT COUNTRYSIDE -

Tawny Cottage is a fabulous & superbly presented barn conversion which originally dates back to circa 1836 & has been cleverly remodelled in more recent years to form one of three individual homes of a high specification. The property finds itself surrounded by countryside and the picturesque village of Barthomley can be found just a short distance away.

The accommodation has been thoughtfully designed and fitted to a high standard with exposed architectural ceiling beams and timbers that feature as a theme throughout.

Accompanying the property are a number of notable features worthy of mention, some of which include: double glazing, oil fired central heating, a welcoming open plan reception hall, superb high ceiling kitchen diner with granite working surfaces and having a seating area, a handy downstairs WC and a feature multifuel burner to the lounge. To the first floor, exposed joists with complementary vaulted ceilings, built-in wardrobes to the principal bedroom with ensuite, second double bedroom and single bedroom, along with a separate family bathroom.

Externally, the property benefits from a stone driveway leading to a useful detached double garage, an enclosed walled courtyard garden which has a south-easterly aspect along with a well-established front garden which is both private and a great place to sit, relax and soak in your surroundings during the summer months.

Contact Stephenson Browne today to book your all-important viewing on this wonderful, wonderful home!



Reception Hall

18'9" x 11'10"

Wood panelled entrance door having glazed inset. Stairs to the first floor. Three single panel radiators. Double glazed windows to the front and rear elevation. Door into:-

Downstairs WC

2'11" x 7'0"

Two piece suite comprising a low level WC with push button flush and a wall mounted wash hand basin with mixer tap. Single panel radiator.

Lounge

13'6" x 18'8"

Double glazed windows to the front and rear elevations. Three single panel radiators. TV aerial and telephone points. Adam's style fireplace housing multi fuel burner.

Kitchen Diner/Sitting Room

19'2" x 19'3"

Double glazed windows to the front and rear elevations. Glazed French doors to the front elevation. Two double panel radiators. Range of wall, base and drawer units with granite work surfaces over incorporating a 1.5 bowl sink with drainer and mixer tap. Integrated fridge freezer. Integrated oven with ceramic hob and extractor canopy over. Integrated dishwasher. TV aerial and telephone points.

Utility Room

6'1" x 6'11"

Composite door having glazed insets opening to the rear. Range of wall and base units with work surfaces over incorporating a stainless steel single drainer sink unit with mixer tap. Space and plumbing for a washing machine. Hot water cylinder. Single panel radiator.

First Floor Landing

Doors to all rooms.

Principal Bedroom

10'11" to robes x 11'3"

Double glazed window to the front elevation. Single panel radiator. Fitted wardrobes with hanging rail and shelving. TV aerial and telephone points.

En-Suite

8'4" x 6'11"

Glazed circular window to the rear elevation. Four piece suite comprising a low level WC with push button flush, pedestal wash hand basin with mixer tap, freestanding bath with mixer tap and a corner shower cubicle with shower over. Shaver point. Heated towel rail.



Bedroom Two

8'0" x 11'8"

Double glazed window to the rear elevation. Single panel radiator. Skylight. TV aerial point.

Bedroom Three

11'3" x 7'3"

Double glazed window to the front elevation. Single panel radiator. Skylight. TV aerial point.

Family Bathroom

Double glazed skylight. Three piece suite comprising a low level WC with push button flush, pedestal wash hand basin with mixer tap and a panelled bath with mixer tap. Shaver point. Single panel radiator.

Double Garage

20'3" x 19'2"

Two double opening doors at the front. Power and lighting. Courtesy door to the rear.

Externally

The property benefits from a stone driveway leading to useful detached double garage. The well-established front garden which is both private and a great place to sit, relax and soak in your surroundings during the summer months. An enclosed walled courtyard garden which has a south-easterly aspect. Oil fired boiler. Tiered side garden housing oil tanks.

Council Tax Band

The council tax band for this property is E.

NB: Tenure

We have been advised that the property tenure is FREEHOLD, we would advise any potential purchasers to confirm this with a conveyancer prior to exchange of contracts.

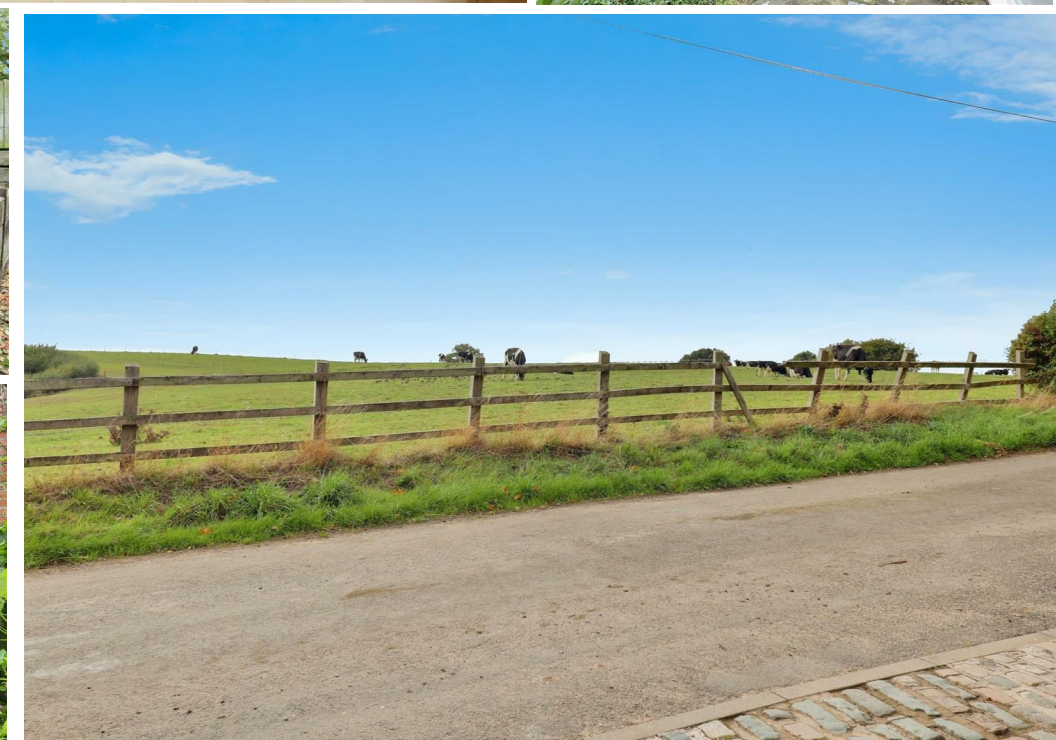
Alsager AML Disclosure

Agents are required by law to conduct Anti-Money Laundering checks on all those buying a property. Stephenson Browne charge £49.99 plus VAT for an AML check per purchase transaction. This is a non-refundable fee. The charges cover the cost of obtaining relevant data, any manual checks that are required, and ongoing monitoring. This fee is payable in advance prior to the issuing of a memorandum of sale on the property you are seeking to buy.

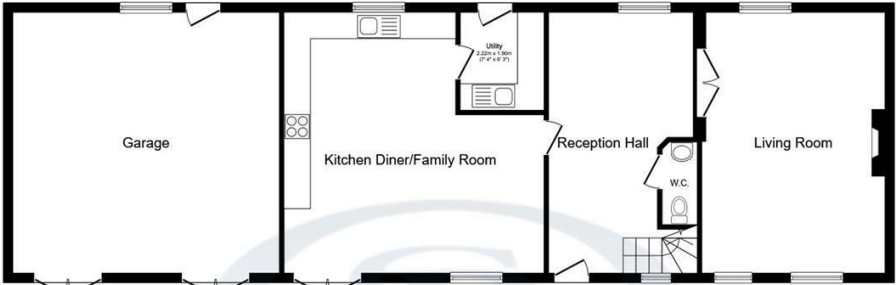
NB: Copyright

The copyright of all details, photographs and floorplans remain the possession of Stephenson Browne.

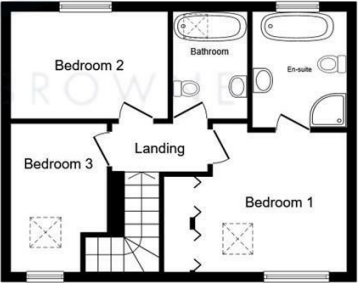




Floor Plan



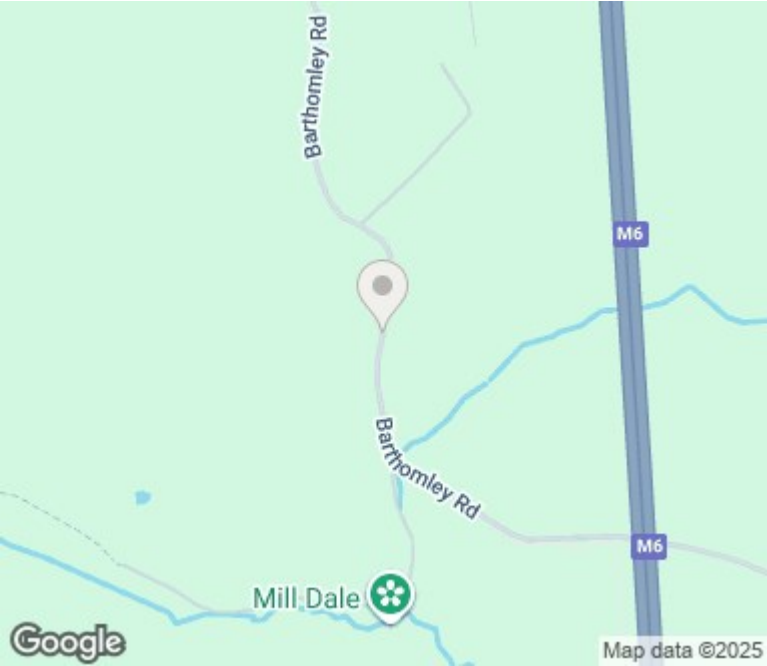
Ground Floor



First Floor

This floor plan is for illustrative purposes only. It is not drawn to scale. Any measurements, floor areas (including any total floor area), openings and orientations are approximate. No details are guaranteed, they cannot be relied upon for any purpose and do not form any part of any agreement. No liability is taken for any error, omission or misstatement. A party must rely upon its own inspection(s). Powered by www.propertybox.io

Area Map



Energy Efficiency Rating		
	Current	Potential
Very energy efficient - lower running costs		
(92 plus) A		
(81-91) B		
(69-80) C		
(55-68) D		
(39-54) E		
(21-38) F		
(1-20) G		
Not energy efficient - higher running costs		
England & Wales	EU Directive 2002/91/EC	

Environmental Impact (CO ₂) Rating		
	Current	Potential
Very environmentally friendly - lower CO ₂ emissions		
(92 plus) A		
(81-91) B		
(69-80) C		
(55-68) D		
(39-54) E		
(21-38) F		
(1-20) G		
Not environmentally friendly - higher CO ₂ emissions		
England & Wales	EU Directive 2002/91/EC	

Viewing

Please contact our Alsager Office on 01270 883130 if you wish to arrange a viewing appointment for this property or require further information.

NOTICE: Stephenson Browne for themselves and for the vendors or lessors of this property whose agents they are give note that: (1) the particulars are set out as a general guideline only for the guidance of intending purchasers or lessees. and do not constitute, nor constitute part of, an offer or contract; (2) all descriptions, dimensions, references to condition and necessary permissions for use and occupation, and other details are given in good faith and are believed to be correct but any intending purchasers or tenants should not rely on them as statements or representations of fact but must satisfy themselves by inspection or otherwise as to be the correctness of each theme; (3) no person in the employment of Stephenson Browne has any authority to make representation or warranty in relation to this property; (4) fixtures and fittings are subject to a formal list supplied by the vendors solicitor. Referring to: Move with Us Ltd Average fee: £123.64

13 Crewe Road, Alsager, Stoke On Trent, ST7 2EW
T: 01270 883130 E: alsager@stephensonbrowne.co.uk W: www.stephensonbrowne.co.uk