



## 7 Charterhouse Buildings, London, , EC1M 7AN £2,750 PCM

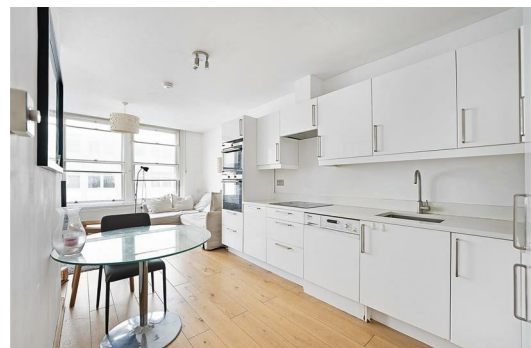
Elms Estates are absolutely delighted to be able to offer to the market To Let this Amazing Two bedroom apartment.

Charterhouse Buildings is very well located with Old Street, Farringdon and Barbican tube stations only just a short walk away to make your commute very easy and giving you access to the whole of London. This property is superbly located with every amenity on your doorstep with an array of restaurants, bars, shops, markets, gyms and everything else this exciting area has to offer.

Internally the property is presented well with a spacious open plan reception/kitchen, two double bedrooms and shower room.

The property is available to move in to Immediately

For more information or to arrange a viewing please do not hesitate to call in and speak with one of our Property Consultants.



Reception/Kitchen

Bedroom One

Bedroom Two

Shower Room

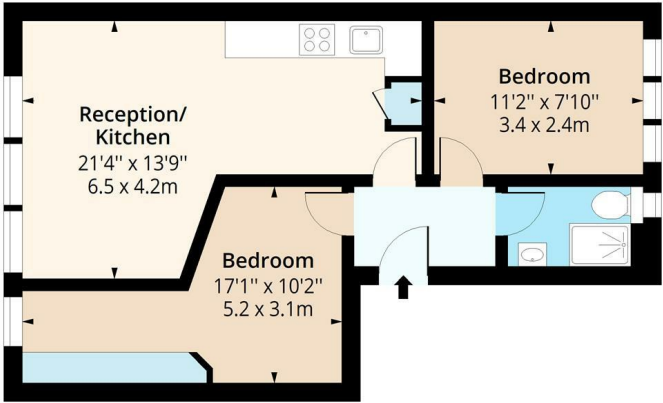
Material Information

Deposit: £3,173.07  
Length Of Tenancy: One Year  
Council Tax Band: D



Charterhouse Buildings, EC1M

Approx. Gross Internal Area 540 Sq Ft - 50.17 Sq M



First Floor  
Floor Area 540 Sq Ft - 50.17 Sq M



Measured according to RICS IPMS2. Floor plan is for illustrative purposes only and is not to scale. Every attempt has been made to ensure the accuracy of the floor plan shown, however all measurements, fixtures, fittings and data shown are an approximate interpretation for illustrative purposes only. 1 sq m = 10.76 sq feet.

lpaplus.com

Date: 28/10/2025

Energy Efficiency Rating		Environmental Impact (CO <sub>2</sub> ) Rating			
Very energy efficient - lower running costs	Current	Potential	Very environmentally friendly - lower CO <sub>2</sub> emissions	Current	Potential
(92 plus) A			(92 plus) A		
(81-91) B			(81-91) B		
(69-80) C			(69-80) C		
(55-68) D			(55-68) D		
(39-54) E			(39-54) E		
(21-38) F			(21-38) F		
(1-20) G			(1-20) G		
Not energy efficient - higher running costs			Not environmentally friendly - higher CO <sub>2</sub> emissions		
England & Wales	EU Directive 2002/91/EC		England & Wales	EU Directive 2002/91/EC	