



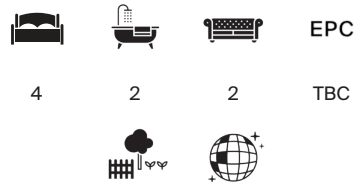
MONTROSE AVENUE

NW6



AN ELEGANT VICTORIAN HOUSE FULL OF CHARACTER

Set within a handsome Victorian terrace on a sought-after street between Queen's Park and Salusbury Road, this beautifully presented home is full of period charm, with original fireplaces, exposed floorboards, and elegant cornicing in the front reception.



Local Authority: London Borough of Brent

Council Tax band: F

Tenure: Freehold

Guide Price: £2,200,000



BRIGHT HOME WITH GENEROUS LIVING SPACE

The ground floor has been thoughtfully opened up to create a generous double reception room at the front, flowing through to a period style kitchen and dining area with rangemaster oven. Large windows and a mature south-facing garden fill the space with natural light creating a wonderfully tranquil, almost countryside atmosphere. There is also scope to extend on the ground floor (STPP).

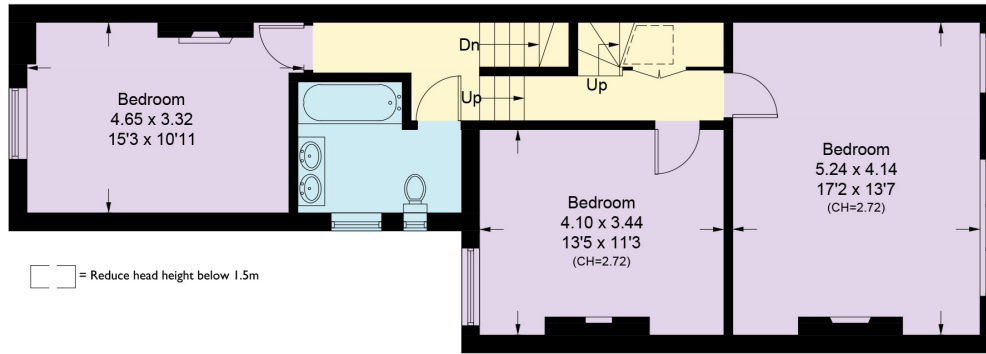
On the first floor, the impressive principal bedroom located at the front of the house features a beautiful fireplace, with a further two double bedrooms and family bathroom completing this level. The converted loft provides an additional spacious double bedroom with abundant built in storage and green, open views over the neighbouring gardens, as well as an ensuite bathroom.

A rare opportunity to acquire a thoughtfully refurbished, character-filled Victorian home in an exceptional location.



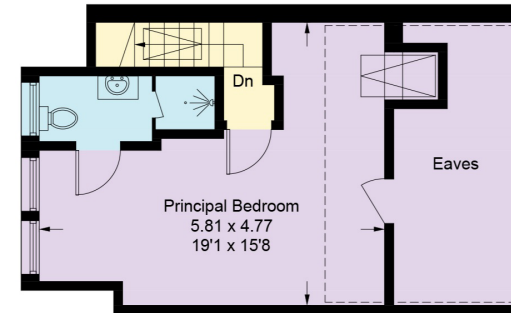






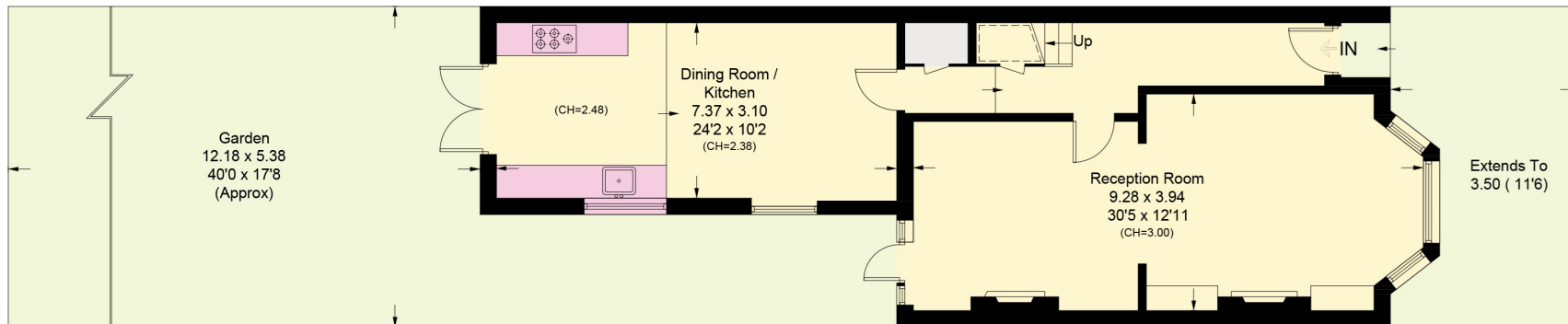
First Floor

Approximate Area = 68.4 sq m / 736 sq ft
Including Limited Use Area (0.6 sq m / 6 sq ft)



Second Floor

Approximate Area = 36.8 sq m / 396 sq ft
Including Limited Use Area (15.4 sq m / 166 sq ft) / Eaves



Approximate Gross Internal Area = 175.4 sq m / 1,888 sq ft

This plan is for layout guidance only. Not drawn to scale unless stated. Windows and door openings are approximate. Whilst every care is taken in the preparation of this plan, please check all dimensions, shapes and compass bearings before making any decisions reliant upon them. (ID767266)

We would be delighted
to tell you more.

Dylan Brooks
+44 20 7317 7968
dylan.brooks@knightfrank.com

Knight Frank Queen's Park
60 Salusbury Road,
London NW6 6NP

[knightfrank.co.uk](https://www.knightfrank.co.uk)

Your partners in property

1. Particulars: These particulars are not an offer or contract, nor part of one. You should not rely on statements given by Knight Frank in the particulars, by word of mouth or in writing ("information") as being factually accurate about the property, its condition or its value. Neither Knight Frank nor any joint agent has any authority to make any representations about the property, and accordingly any information given is entirely without responsibility on the part of Knight Frank. 2. Material Information: Please note that the material information is provided to Knight Frank by third parties and is provided here as a guide only. While Knight Frank has taken steps to verify this information, we advise you to confirm the details of any such material information prior to any offer being submitted. If we are informed of changes to this information by the seller or another third party, we will use reasonable endeavours to update this as soon as practical. 3. Photos, Videos etc: The photographs, property videos and virtual viewings etc. show only certain parts of the property as they appeared at the time they were taken. Areas, measurements and distances given are approximate only. 4. Regulations etc: Any reference to alterations to, or use of, any part of the property does not mean that any necessary planning, building regulations or other consent has been obtained. A buyer must find out by inspection or in other ways that these matters have been properly dealt with and that all information is correct. 5. Fixtures and fittings: A list of the fitted carpets, curtains, light fittings and other items fixed to the property which are included in the sale (or may be available by separate negotiation) will be provided by the Seller's Solicitors. 6. VAT: The VAT position relating to the property may change without notice. 7. To find out how we process Personal Data, please refer to our Group Privacy Statement and other notices at <https://www.knightfrank.com/legals/privacy-statement>.

Particulars dated May 2024. Photographs and videos dated May 2024. All information is correct at the time of going to print. Knight Frank is the trading name of Knight Frank LLP. Knight Frank LLP is a limited liability partnership registered in England and Wales with registered number OC305934. Our registered office is at 55 Baker Street, London W1U 8AN. We use the term 'partner' to refer to a member of Knight Frank LLP, or an employee or consultant. A list of members names of Knight Frank LLP may be inspected at our registered office. If you do not want us to contact you further about our services then please contact us by either calling 020 3544 0692, email to marketing.help@knightfrank.com or post to our UK Residential Marketing Manager at our registered office (above) providing your name and address.