



38 Stanhope Road, Littlehampton, BN17 6AQ

£267,500

- Victorian Terrace House
- 11'5x11'4 Dining Room
- Attractive Lawned Rear Garden
- Chain Free
- Three Bedrooms
- 14'1x11'8 Master Bedroom
- Room For Buyers To Add Their Stamp To This Property
- 13'3 West Facing Lounge
- 7'0 Ground Floor Bathroom
- Vacant Possession

38 Stanhope Road, Littlehampton BN17 6AQ

Chain Free Victorian Terrace with Excellent Potential

Offered for sale with vacant possession and no onward chain, this attractive three-bedroom Victorian terrace provides an excellent opportunity for buyers looking to create a home of their own.

The accommodation comprises a bright 13'3" west-facing lounge, separate 11'5" x 11'4" dining room, ground floor bathroom, and three well-proportioned bedrooms, including a generous 14'1" x 11'8" master bedroom.

Outside, the property benefits from an attractive lawned rear garden, ideal for relaxing or entertaining.

Requiring some updating, this charming home offers plenty of scope to add value while retaining its Victorian character. Early viewing is recommended.



Council Tax Band: B

Tenure: Freehold



LIVING ROOM

13'3x10'7

DINING ROOM

11'5x11'4

KITCHEN

11'9x7'4

BATHROOM

7'0x5'7

BEDROOM 1

14'1x11'8

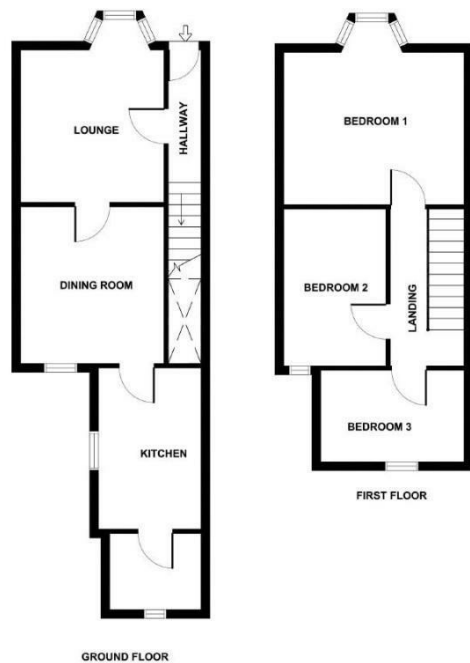
BEDROOM 2

11'4x8'5

BEDROOM 3

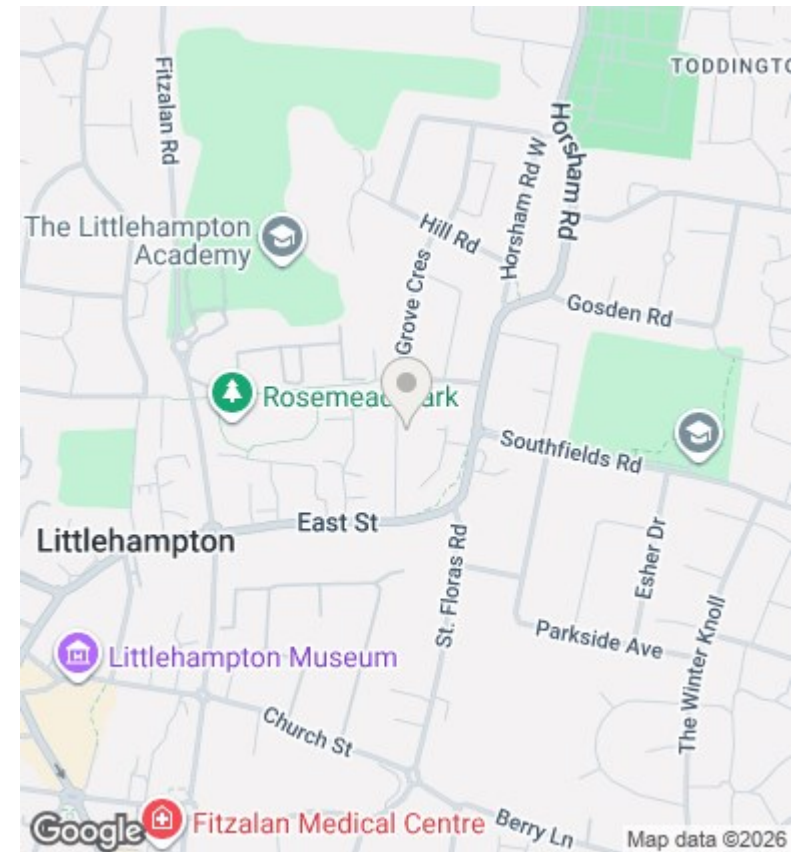
11'8x7'3





38 STANHOPE ROAD, LITTLEHAMPTON, SUSSEX

FLOOR PLAN FOR IDENTIFICATION PURPOSES ONLY - NOT TO SCALE



Energy Efficiency Rating		
	Current	Potential
Very energy efficient - lower running costs		
(92 plus) A		
(81-91) B		
(69-80) C		
(55-68) D		
(39-54) E		
(21-38) F		
(1-20) G		
Not energy efficient - higher running costs		
	66	77
England & Wales	EU Directive 2002/91/EC	

These particulars are produced in good faith and are believed to be correct, but their accuracy is in no way guaranteed and they do not form part of a contract. We have not carried out a survey, nor tested the services, appliances and specified fittings. Room measurements are approximate.