



ESWYN ROAD, SW17

£875,000

- Corner Plot Location
- 3 Large Double Bedrooms
- 3 Reception Rooms
- 2 Bathrooms
- Wrap Around Gardens
- Sought After Location





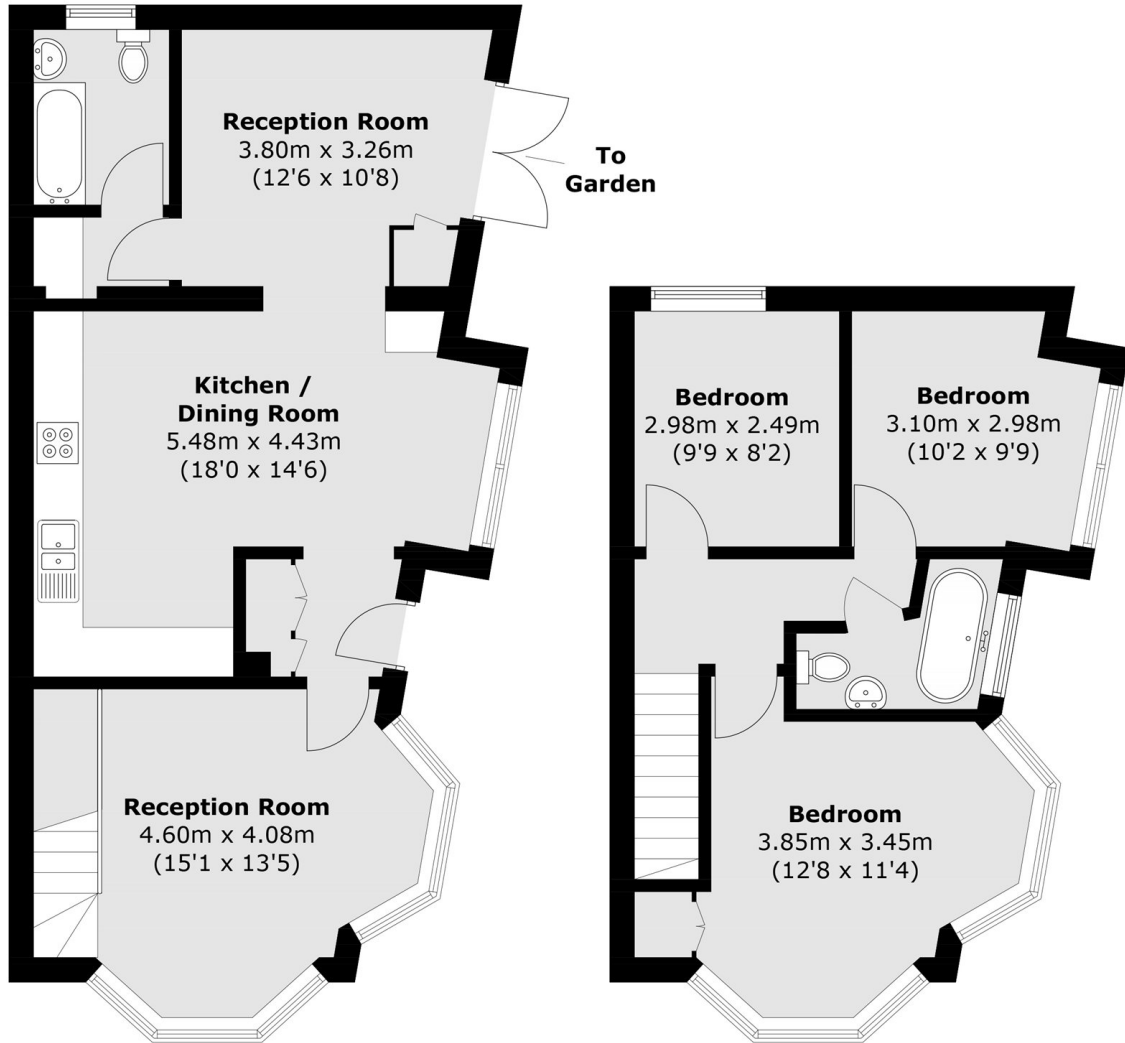
ABOUT THE HOME

A gorgeous 3 bedroom end of terrace family home, occupying this enviable corner plot at the junction of Eswyn Road and Vant Road. Internally the property amasses 1031 sqft, which comprises on the ground floor; A large reception room, spacious kitchen / diner and finally another generous reception TV room, ground floor utility bathroom and benefitting from private wrap around gardens. Returning inside to the first floor, there are 3 generous double bedrooms, a stylish family bathroom and access to the loft void. Which subject to planning is able to be extended to add further bedroom and bathrooms.

Eswyn Road is one of Tooting's most sought-after residential streets, ideally positioned within walking distance of popular local nurseries, Ofsted-rated primary schools, and the lively Upper Tooting Road and Tooting Broadway Market. Excellent transport links are available via Tooting Broadway (Northern line), Tooting rail station, and regular bus services.





**Ground Floor****First Floor**

Total area (approx.): 96.4 sq. m (1,037.7 sq. ft)

JACKSONS TOOTING

3 Upper Tooting Road, London,
SW17 7TS
Sales: 020 8487 3175
Lettings: 020 8487 3176

Energy Rating: We aim to make our particulars both accurate and reliable. However they are not guaranteed; nor do they form part of an offer or contract. If you require clarification on any points then please contact us, especially if you're traveling some distance to view. Please note that appliances and heating systems have not been tested and therefore no warranties can be given as to their good working order.