



Sutherland Road, W13

£445,000

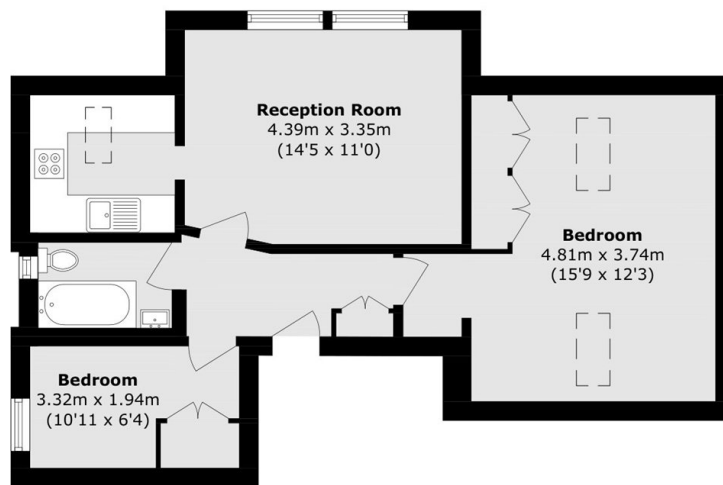
A spacious two bedroom top-floor conversion flat in an impressive detached period building, redeveloped with a modern fitted kitchen and luxury bathroom. The property also benefits from allocated parking, a communal garden, over 100 years remaining on the lease, and low service charges.

Set on Sutherland Road, the flat is perfectly placed for West Ealing Station (Paddington Line and Heathrow Connect) just under half a mile away. The vibrant local area offers a wide selection of shops, cafes, and restaurants, including a large Waitrose.

Features

- Two Bedrooms
- Top Floor
- Allocated Parking
- Immaculate Condition
- Communal Garden
- Long Lease

Sutherland Road, London, W13



Total area (approx.): 56.9 sq. m (612.4 sq. ft)