



## Elystan Street, SW3

£865 Per week

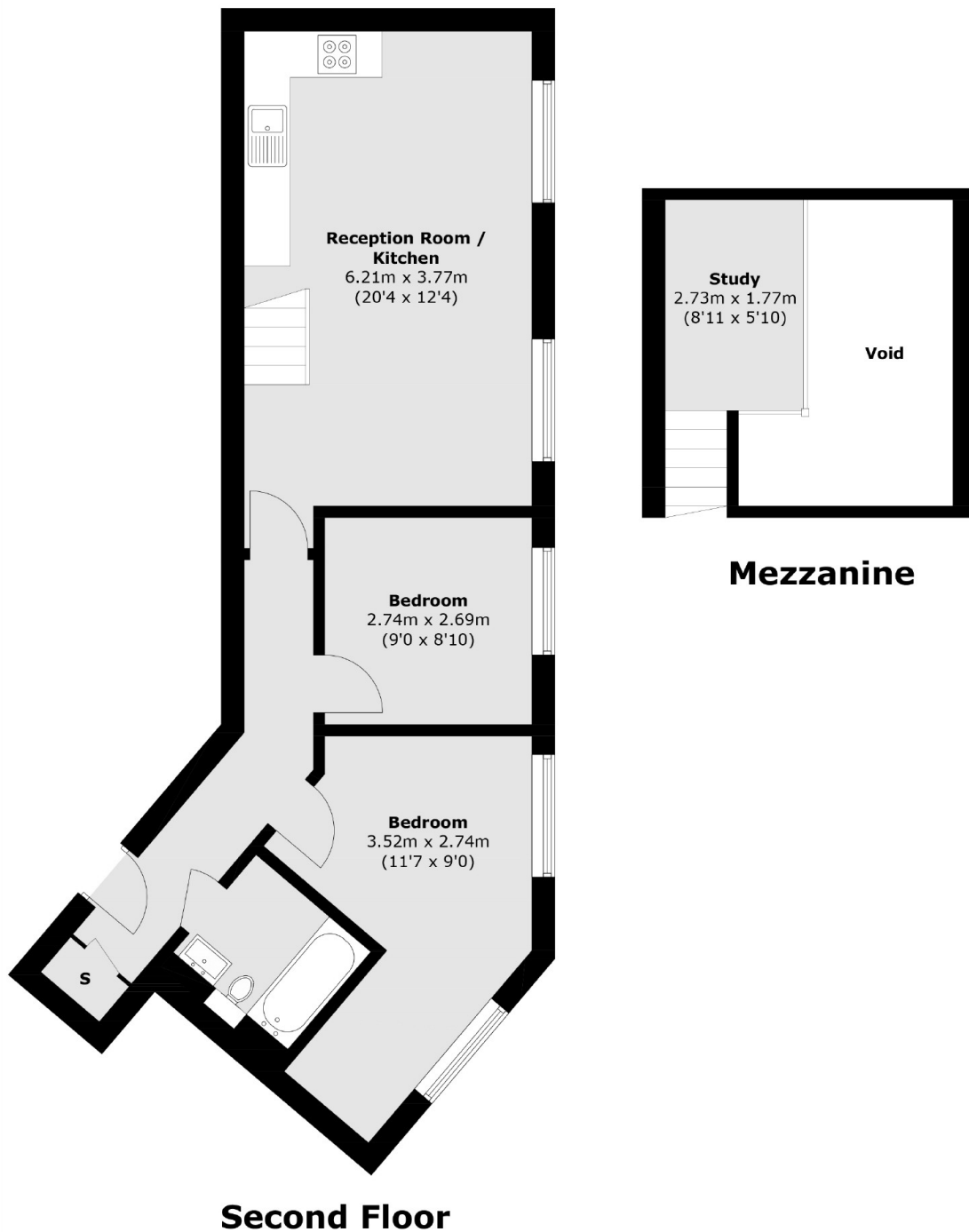
An incredible two bedroom apartment to let in the heart of Chelsea Green, Sloane Square. The property has two double bedrooms and an additional mezzanine study area, perfect for working from home.

The property is located just off Kings Road with views down Markham Street. You will have very easy access to all local amenities including local bars, restaurants, boutique stores, high street stores and super stores. This is such an exciting part of Chelsea to live in.

### Features

- Two Double Bedrooms
- Mezzanine Study Area
- Open Plan Kitchen
- Second Floor Flat
- Wood Floors
- Chelsea Green

# Elystan Street, London, SW3



Total area (approx.): 61.7 sq. m (664.0 sq. ft)  
(Including Mezzanine / Excluding Void)