



Schooner Close

London, E14

Asking Price £625,000

A beautifully-presented & meticulously-maintained 2 bedroom, 2 bathroom garden maisonette with conservatory & private garden in Schooner Close, close to Mudchute Park & Farm. Additional benefits include: off-street parking & integral garage. Offered chain-free.

CHESTERTONS



Schooner Close

London, E14

- 1146sq ft 2 bedroom 2 bathroom ground & 1st floor maisonette.
- Recently re-floored & re-decorated throughout.
- Generous private garden; off-street parking.
- Peaceful location close to the river.
- Offered chain-free.



A beautifully-presented & meticulously-maintained 2 bedroom, 2 bathroom garden maisonette of approximately 1146sq ft internally with conservatory & private garden in Schooner Close, close to Mudchute Park & Farm. Additional benefits include: off-street parking & integral garage.

The property has recently been re-floored & redecorated throughout & is in immaculate condition internally. The integral garage incorporates a utility room. The internal space has been extended with a conservatory. The West-facing garden is still very generous compared to modern houses on the Isle of Dogs.

Schooner Close is situated in a quiet & peaceful riverside location on the Eastern side of the Isle of Dogs. Nearby transport links include Island Gardens DLR station, local bus routes on Manchester Road, & the Greenwich Foot Tunnel. There are also a smattering of amenities: convenience stores, takeaways, & shops nearby.

Offered chain-free with vacant possession.

Tenure:	Leasehold – 970 years remaining approx.
Service Charge:	£2,085pa approx
Ground Rent:	£25pa
Local Authority:	Tower Hamlets
Council Tax Band:	D

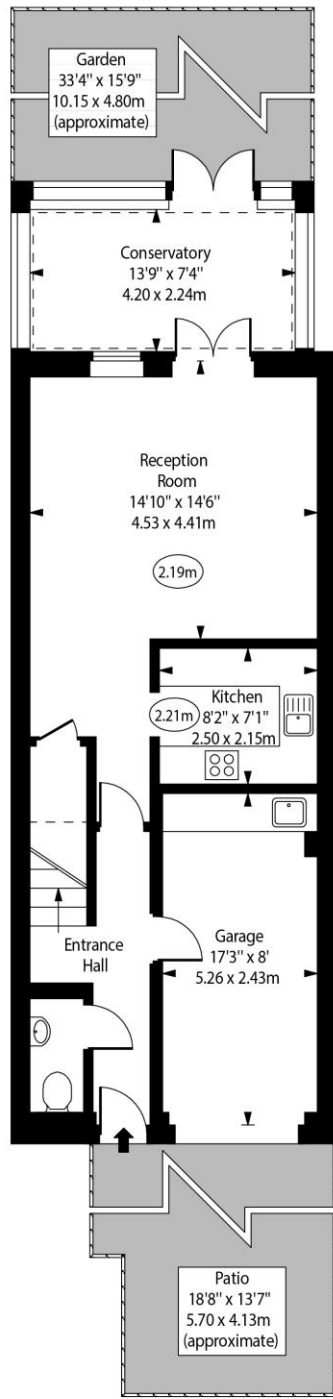
Chestertons Canary Wharf & Greenwich Sales

Harbour Island
28 Harbour Exchange Square
London
E14 9GE
canarywharf@chestertons.co.uk
020 7510 8300
chestertons.co.uk

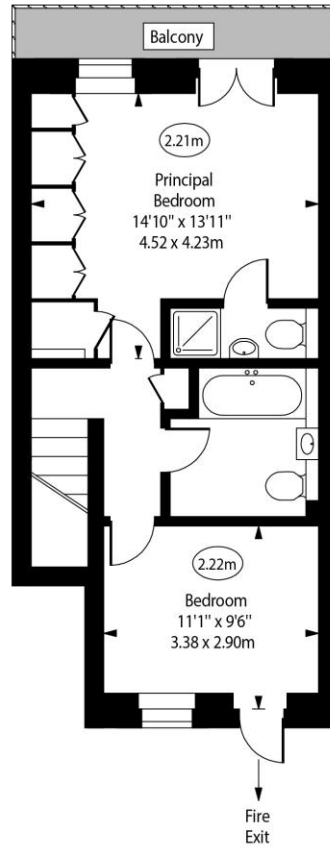
Schooner Close, E14



○ - Ceiling Height



Ground Floor



First Floor

Approx Gross Internal Area 1146 Sq Ft - 106.46 Sq M
(Including Garage)

Every attempt has been made to ensure the accuracy of the floor plan shown. However, all measurements, fixtures, fittings, and data shown are approximate interpretations and for illustrative purposes only. Measured according to the RICS. Not To Scale.

www.goldlens.co.uk
Ref. No. 031993J

