

# DURDEN & HUNT

INTERNATIONAL



## Hilltop Close, Loughton IG10

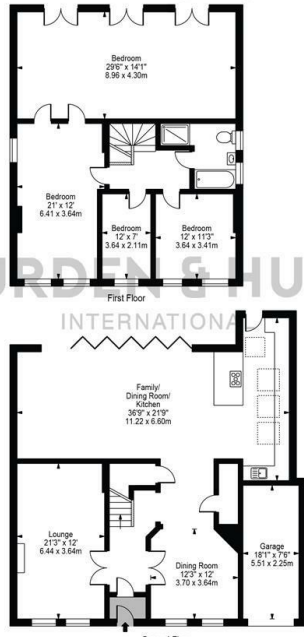
Offers Over £1,450,000

- Desirable Location
- Beautiful Landscaped Front And Rear Gardens
- Additional Reception Room
- Well Maintained Throughout
- Attractive Detached Residence
- Open Plan Living
- Four Bedrooms
- Garage And Off Road Parking
- Integrated Kitchen Appliances
- Modern Family Bathroom

309 High Road, Loughton, Essex, IG10 1AL  
0203 026 0160

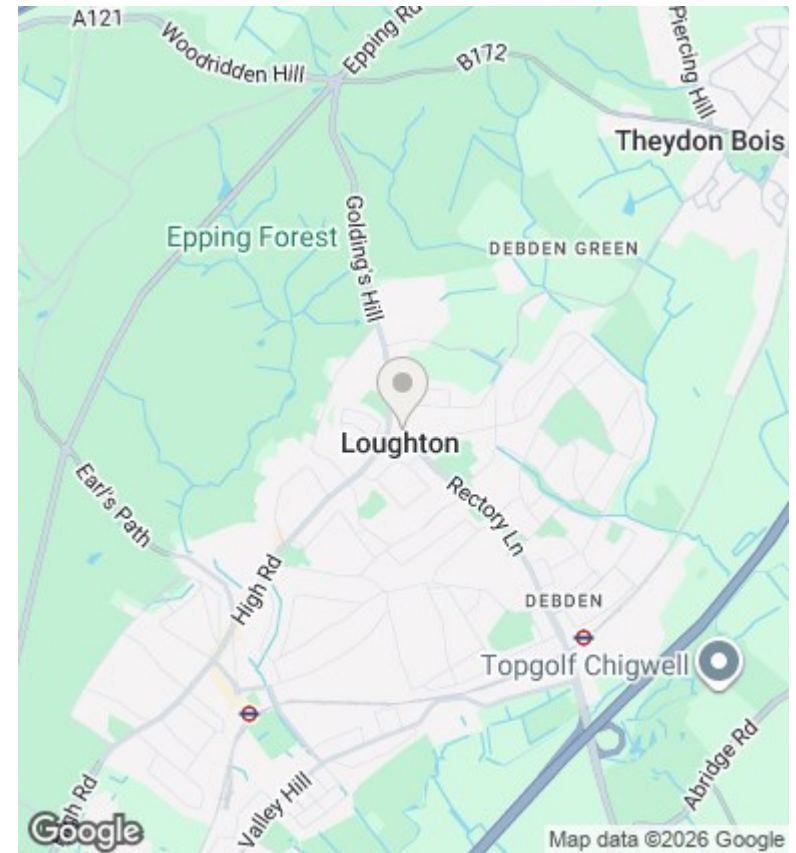
[loughton@durdenandhunt.co.uk](mailto:loughton@durdenandhunt.co.uk)  
<https://www.durdenandhunt.co.uk/>

**Hilltop Close**  
 Approx. Total Internal Area 2442 Sq Ft - 226.88 Sq M  
 (Including Garage)  
 Approx. Gross Internal Area Of Garage 133 Sq Ft - 12.40 Sq M



For Illustration Purposes Only - Not To Scale

This floor plan should be used as a general outline for guidance only and does not constitute in whole or in part an offer or contract. Any intending purchaser or lessee should satisfy themselves by inspection, searches, enquiries and full survey as to the correctness of each statement. Any areas, measurements or distances quoted are approximate and should not be used to value a property or be the basis of any sale or let.



## Viewings

Viewings by arrangement only. Call 0203 026 0160 to make an appointment.

## Council Tax Band

G

## EPC Rating:

C

