

HENDERSON CONNELLAN

ESTATE AGENTS

HENDERSON
CONNELLAN
ESTATE AGENTS

for sale
01536 417888

St. Oswalds Close, Kettering NN15

"Perfectly Crafted"

"Perfectly Crafted"

This attractive extended three-bedroom semi-detached home is tucked away in a quiet cul-de-sac on the popular Ise Lodge, ideally positioned close to local shops and everyday amenities, within easy reach of Wicksteed Park for scenic walks and outdoor leisure, and just a pleasant walk into Kettering town centre along with local schools/amenities on your doorstep. Featuring an entrance hall with understairs storage, guest cloakroom, a spacious living/dining room with double doors opening to the extended versatile study/snug overlooking the garden, and a well-equipped kitchen with integrated oven, induction hob and access to the rear garden. Upstairs are three bedrooms including two doubles, with two bedrooms benefiting from built-in storage, along with a family bathroom. Outside, the property enjoys a driveway providing off-road parking, a well-kept front lawn, and a generous rear garden with a patio area ideal for entertaining, mature borders, a shed, and secure gated side access.

Living/ Dining Room - 6.35m x 3.53m (20'10" x 11'7")

Study - 2.44m x 1.8m (8'0" x 5'11")

Kitchen - 5.03m x 2.64m (16'6" x 8'8")

Guest WC - 2.08m x 1.07m (6'10" x 3'6")

Bedroom One - 3.81m x 3.71m (12'6" x 12'2")

Bedroom Two - 3.73m x 2.49m (12'3" x 8'2")

Bedroom Three - 3m x 2.39m (9'10" x 7'10")

Bathroom - 1.8m x 1.65m (5'11" x 5'5")

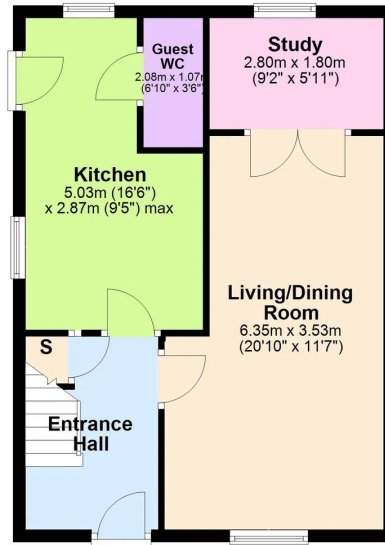
- Semi-Detached Home
- Three Bedrooms
- Downstairs WC
- Extended to the Ground Floor
- Versatile Study
- Offroad Parking for One Car
- Cul De Sac Location
- Gas Central Heating and UPVC Double Glazing
- EPC RATING: PENDING
- COUNCIL TAX: B

Tenure: Freehold

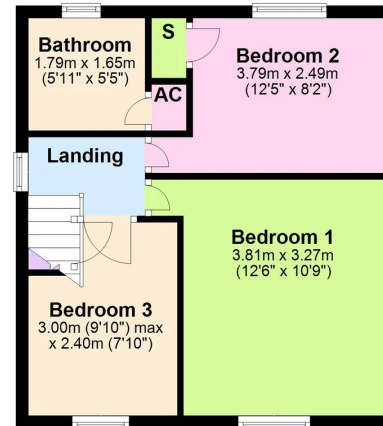




Ground Floor



First Floor



Henderson Connellan Kettering office 01536 417888 ketteringsales@hendersonconnellan.co.uk



Disclaimer: These particulars do not form part of any offer or contract and should not be relied upon as statements or representations of fact. Any areas, measurements of distances are approximate. The text, photographs and plans are for guidance only and are not necessarily comprehensive.

