

Jonathan Hunt

ESTATE AGENCY

20 High Street Ware SG12 9BX

Tel: 01920 411090

8 High Street Buntingford SG9 9AG

Tel: 01763 272727

info@jonathan-hunt.co.uk

www.jonathanhunt.co.uk



Old Bowling Forge Cottered, Buntingford, SG9 9PS

Price Guide £783,500

Old Bowling Forge Cottered, Buntingford, SG9 9PS

Set opposite the village green, this Four bedroom Grade II listed thatched cottage offers the kind of charm and atmosphere that's hard to find. Beautifully maintained and recently re-thatched, the home blends its historic character with thoughtful modern touches, creating a space that feels both timeless and genuinely comfortable. Inside, the cottage unfolds with an easy, homely flow. The kitchen/breakfast room is well appointed and naturally becomes a gathering spot, while the family room and additional sitting room offer cosy corners for reading, relaxing, or simply enjoying the slower pace that comes with village living. A utility room and ground-floor WC add everyday practicality. Upstairs, the principal bedroom includes its own en suite, and three further bedrooms provide flexibility for family, guests, or home working. Each room carries the warmth and texture of the property's original features, exposed beams, characterful angles, and the unmistakable feel of a home with history. The rear garden is a generous, peaceful space with room to unwind, entertain, or simply enjoy the rural surroundings. Off-street parking adds convenience, while the setting, quiet, green, and quintessentially English, makes this cottage an appealing choice for anyone seeking a period home that still works beautifully for modern life. A rare opportunity to enjoy village living with character, comfort, and a sense of place.



PORCH

HALLWAY

LOUNGE 18'10" x 12'2" (5.75 x 3.71)

KITCHEN/DINER 16'11" x 10'3" (5.16 x 3.14)

FAMILY ROOM 14'2" x 12'3" (4.34 x 3.74)

LANDING

PRINCIPLE BEDROOM 14'6" x 12'1" (4.43 x 3.70)

SHOWER ROOM 7'3" x 5'7" (2.23 x 1.71)

BEDROOM TWO 12'5" x 10'7" (3.80 x 3.25)

BEDROOM THREE 12'1" x 7'3" (3.70 x 2.23)

BATHROOM 10'7" x 4'1" (3.24 x 1.26)

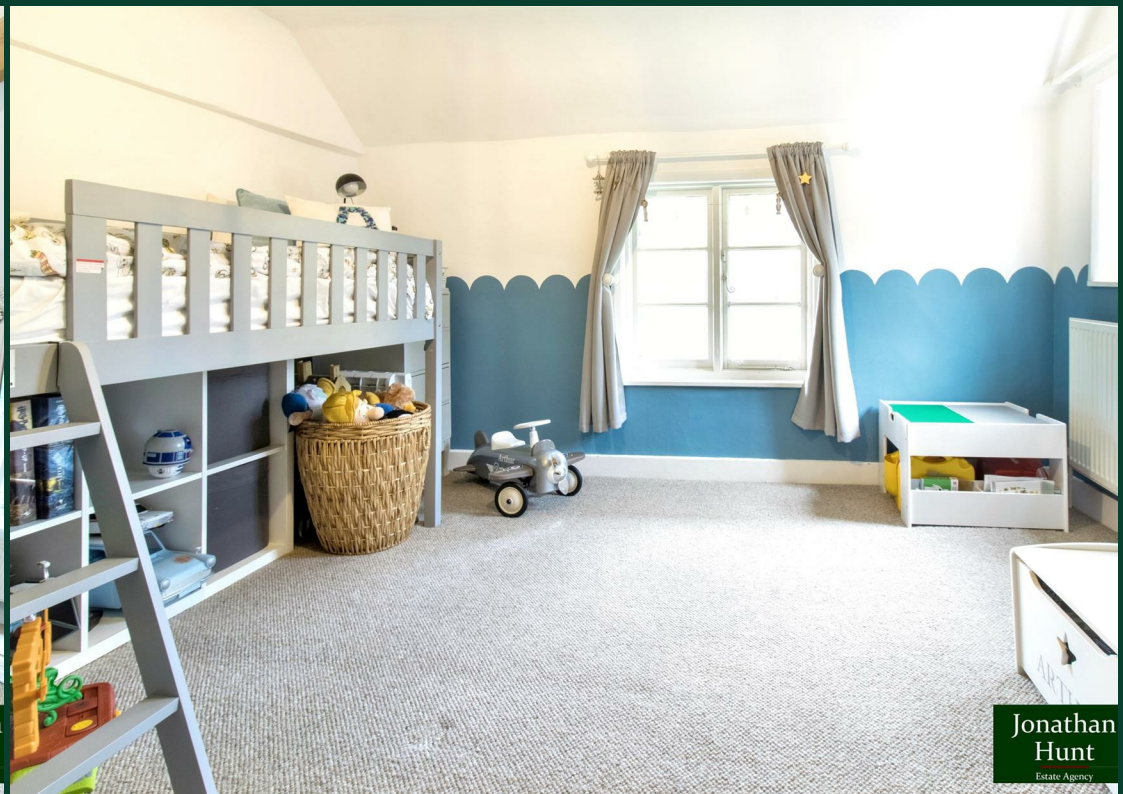
BEDROOM FOUR 10'7" x 7'8" (3.23 x 2.36)

GARDEN

DRIVEWAY



Jonathan
Hunt
Estate Agency



Jonathan
Hunt
Estate Agency



Jonathan
Hunt
Estate Agency

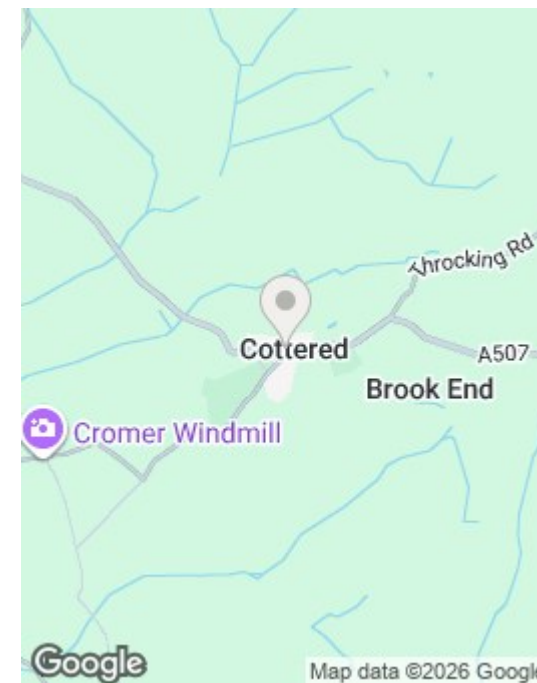
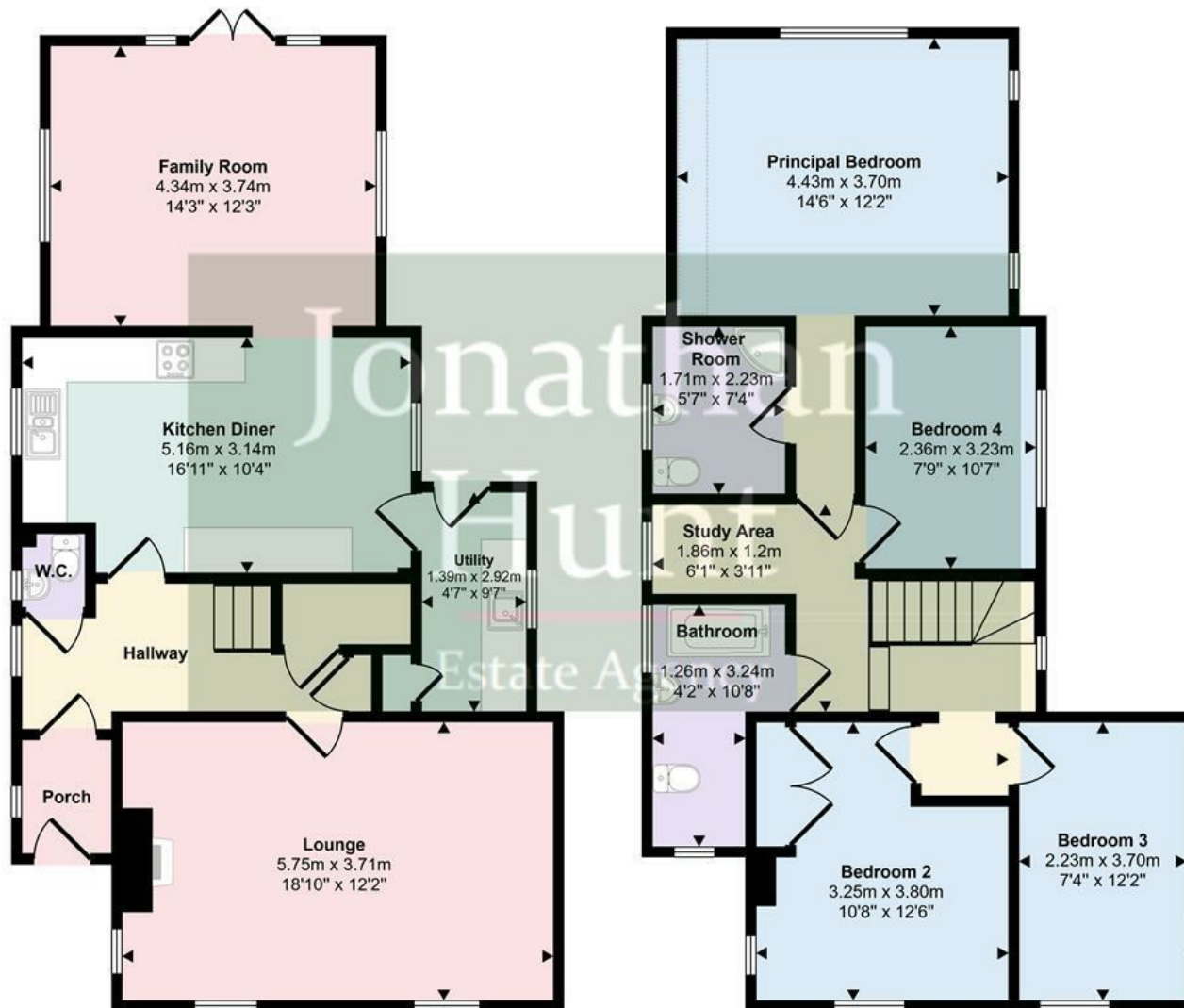


Jonathan
Hunt
Estate Agency

TOILET



Approx Gross Internal Area
140 sq m / 1502 sq ft



Ground Floor
Approx 72 sq m / 777 sq ft

First Floor
Approx 67 sq m / 725 sq ft

Denotes head height below 1.5m

This floorplan is only for illustrative purposes and is not to scale. Measurements of rooms, doors, windows, and any items are approximate and no responsibility is taken for any error, omission or mis-statement. Icons of items such as bathroom suites are representations only and may not look like the real items. Made with Made Snappy 360.