



Friary Hill , Dorchester DT1 1JG

- Short stroll to Dorchester town centre
- Allocated parking space
- Nearby riverside walks
- Ideal first time buy
- Ground floor apartment
- No onward chain
- Own private entrance

£120,000 Leasehold





Front of property

Brick enclosed gravelled frontage with steps leading up to the side aspect. Entry is via a double-glazed UPVC front door into the...

Porch

Front aspect double glazed window, vinyl flooring, and an obscured glass door opening into the...

Open plan living area

14'5" x 12'5"

Spacious front-aspect open-plan living area featuring a ceiling light, multiple power points, a built-in cupboard housing a Worcester combination boiler, and a wall-mounted thermostat. An archway leads through to the...



Kitchen

10'9" x 4'11"

Fitted with a range of eye-level and base units, an integrated eye-level oven, a four-ring electric hob with extractor hood above, a stainless steel sink with drainer and mixer tap, ceiling light, and multiple power points.

Inner hallway

Includes a storage cupboard, radiator, ceiling light, and door leading to the...

Bathroom

7'6" x 5'2"

Partially tiled bathroom, fitted with a low-level WC, hand wash basin with stainless steel mixer tap, bath tub with stainless steel taps, a handheld shower above and a heated towel rail.

Bedroom

14'1" x 8'2"

Rear-aspect double-glazed window, radiator, ceiling light, power points and an obscured double-glazed door providing access to the...

Rear & Parking

Residents-only parking area with one allocated space, a patio area with a brick-built bin store. The rear of the property is enclosed by a wall and accessible from both sides of the property.

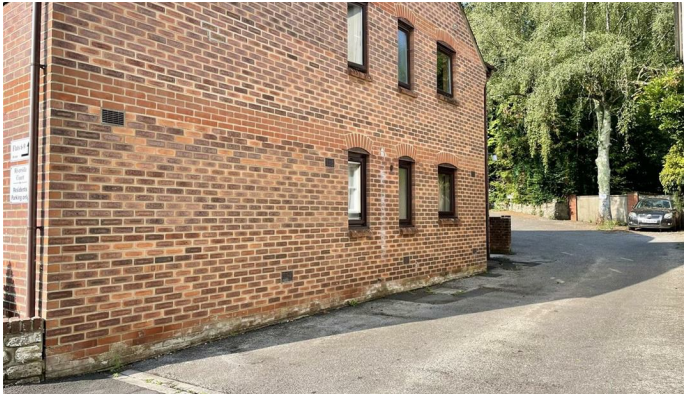


Local Authority
Council Tax Band **A**
EPC Rating **C**



RIVERSIDE CT.

Whilst every effort has been made to ensure the accuracy of the floorplan contained here, measurements of doors, windows, rooms and any other items are approximate and no responsibility is taken for any error, omission or misstatement. This plan is for guidance purposes only and should be used as such by any prospective purchaser. The services, systems and appliances shown have not been tested and no guarantee is given regarding their operation or efficiency. Measurements are given to the nearest millimetre.



Direct Moves Estate Agents Office

9 Westham Road
Dorset
Weymouth
DT4 8NP

Contact

01305 778500
sales@directmoves.com
<https://directmoves.com/>

Agents Note: Whilst every care has been taken to prepare these particulars, they are for guidance purposes only. All measurements are approximate and for general guidance purposes only and whilst every care has been taken to ensure accuracy, they should not be relied upon and potential buyers/tenants are advised to recheck the measurements.