



6 Lilley Street, Long Bennington, Newark,
Nottinghamshire, NG23 5EJ

£395,000
Tel: 01636 611 811

 **RICHARD
WATKINSON
PARTNERS**
Surveyors, Estate Agents, Valuers, Auctioneers

Well positioned on Lilley Street in the charming village of Long Bennington, this delightful semi-detached period 4 bedroom house offers a great opportunity for those seeking a spacious family home with character. Boasting four well-proportioned bedrooms, this property is ideal for a growing family or even a multi-generational living arrangement.

As you enter, you are greeted by an entrance hallway, three inviting reception rooms, each with period charm and warmth. The living room, sitting room, and dining room provide ample space for relaxation and entertaining, while the kitchen and conservatory offer a perfect blend of functionality and light. The ground floor also features a convenient WC, shower room, and utility room, enhancing the practicality of the home.

On the first floor the landing leads to three large double bedrooms, one well proportioned single bedroom, a family bathroom and separate WC.

Set on a generous plot, the property benefits from extensive gardens, with secluded areas laid out with lawn which are planted with trees and shrubs, creating a pleasant and quiet outdoor space. The driveway accommodates parking for up to ten vehicles, complemented by a double garage, ensuring that parking will never be a concern.

While the house is already filled with character, it also presents an exciting opportunity for improvement and modernisation, allowing you to tailor the space to your personal taste and lifestyle. With its charming features and potential for enhancement, this property is a rare find in a sought-after location.

The village of Long Bennington is a sizeable community bypassed by the A1 trunk road and situated approximately 7 miles from Newark and 7 miles from Grantham. The property is situated within a convenient and short walking distance of the Church of England Primary School, a modern, well stocked Co-Operative store, public house and restaurant. Village amenities also include hairdressers, fish and chip shop, a modern doctors surgery and community

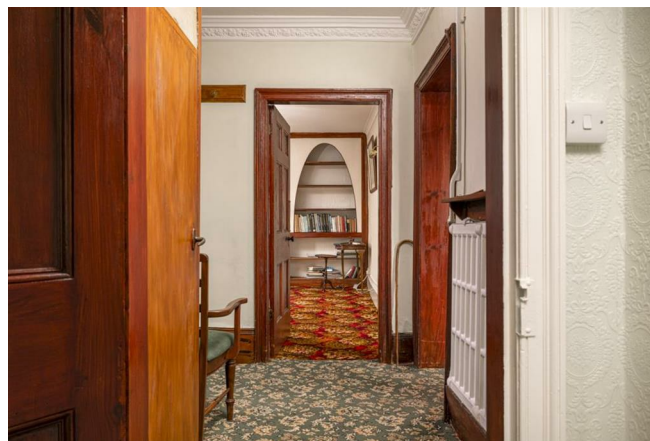
facilities. Rail services from Grantham and Newark to London King's Cross are capable of journey times in just over 75 minutes. The village is also ideally located for commuting to Nottingham

This semi-detached period house is constructed of mostly brick with part blue Lyas stone to the rear wall, under a slate roof covering, which was re-roofed in 2026. The conservatory extension connects the main house to the former outbuildings and has a polycarbonate roof covering. The living accommodation has the benefit of a gas fired central heating system which had a new boiler installed in 2020. There are replacement uPVC double glazed windows and six roof mounted solar panels which are owned. The living accommodation is laid out over two levels and can be described in more detail as follows:

GROUND FLOOR

ENTRANCE HALL

15'1 x 7'11 (4.60m x 2.41m)



Composite front entrance door with double glazed light over, radiator. Staircase leading to first floor with storage cupboard under.



LIVING ROOM

15'3 x 14'7 (4.65m x 4.45m)



UPVC double glazed window to front elevation, brick fireplace with wooden fire surround and marble hearth. Fireplace recesses with built in wooden shelving. Display recess with glass shelves.

SITTING ROOM

14'6 x 14'1 (4.42m x 4.29m)



UPVC double glazed window to front elevation. Stone fireplace and hearth. Coved ceiling, radiator.

DINING ROOM

14'11 x 12'5 (4.55m x 3.78m)



UPVC double glazed window to the side, former fireplace recess. Built in floor to ceiling traditional fireside cupboard with solid pine doors, coved ceiling.

KITCHEN

12'5 x 9'4 (3.78m x 2.84m)



There is a stud partition wall between the kitchen and dining room which could be removed to create an open plan kitchen and dining room, subject to the relevant building regulations and permissions. UPVC double glazed window to the rear and rear entrance door. Ceramic tiled floor, three fully tiled walls,. Range of fitted, modern Shaker style kitchen units include base cupboards and drawers with working surfaces over, inset composite sink and drainer with mixer tap. Tall cupboard, wall mounted cupboards. Space and plumbing for a dishwasher. Fitted appliances include Stoves New Home electric double oven and gas hob.

CONSERVATORY

24'10 x 10' (7.57m x 3.05m)
(plus 8'10 x 6'8)



A conservatory extension connecting the main house to the former outbuildings with uPVC double glazed windows and polycarbonate roof covering. High level uPVC double glazed window to the side. UPVC double glazed windows and uPVC double glazed door giving access to the driveway. Modern Worcester Green Star RRI gas central heating boiler fitted circa 2020. Plumbing for automatic washing machine, base cupboard and working surfaces. The former brick built outbuildings were converted to provide utility, shower room and WC and are further described as follows:

UTILITY ROOM

9'7 x 6'2 (2.92m x 1.88m)

Fitted base cupboards and wall mounted cupboards, polycarbonate roof covering.

SHOWER ROOM

6'2 x 4'11 (1.88m x 1.50m)



High level uPVC double glazed internal window, polycarbonate roof covering, heated towel rail. Double shower cubicle with shower boards to the walls, Mira shower and sliding glass screen doors. Extractor fan.

WC

5'2 x 3'9 (1.57m x 1.14m)

With low suite WC, pedestal wash hand basin. High level uPVC double glazed window and polycarbonate roof.

SECOND FLOOR

LANDING

12'x 3'4 (3.66m x 1.02m)

Radiator.

REAR LANDING

7'8 x 2'11 (2.34m x 0.89m)

(plus 3'2 x 2'8)

L shaped, uPVC double glazed window to side elevation.

BEDROOM ONE

15'4 x 12'11 (4.67m x 3.94m)



A dual aspect room with uPVC double glazed windows to the front and rear elevation. Radiator. Fitted triple wardrobe with sliding mirrored doors, hanging rail and shelving.

BEDROOM TWO

15'4 x 11'10 (4.67m x 3.61m)



UPVC double glazed window to front elevation. Fitted double wardrobe with sliding mirrored doors. Recess with wooden counter, wash hand basin and wood vanity cupboard under. Double panelled radiator.

BEDROOM THREE

11'7 x 8'4 (3.53m x 2.54m)

(plus 3'8 x 3'5)



UPVC double glazed window to front elevation, two fitted wardrobes with cupboards over. Period fire surround and cast iron hob fireplace. Recess with fitted traditional style white vanity style wash hand basin and cupboard under.

BEDROOM FOUR

4'7 x 6'11 (1.40m x 2.11m)



UPVC double glazed window to rear elevation, coved ceiling, loft access hatch.

FAMILY BATHROOM

7'8 x 5'11 (2.34m x 1.80m)



UPVC double glazed window to the rear, built in airing cupboard with latted shelving and hot water cylinder. Bathroom suite comprising a cast iron bath with a Mira Advance electric shower over, wash hand basin set on a tiled counter with vanity cupboard under. Fully tiled walls.

WC

4'9 x 3' (1.45m x 0.91m)

Low suite WC, uPVC double glazed window to side elevation.

OUTSIDE



The property occupies a generous sized plot with frontage to Lilley Street, Along the front boundary there are wrought iron rails and gate and centre opening gates leading to the driveway. The front garden is enclosed and laid out with lawn, borders and planted with trees and shrubs.



DOUBLE GARAGE

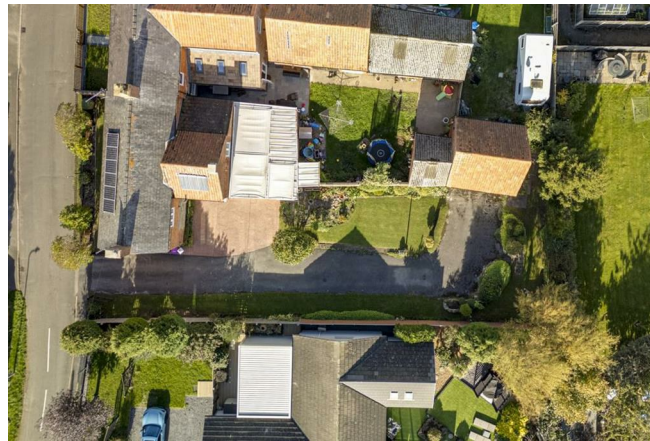
18' x 18' (5.49m x 5.49m)



A brick built garage with a pantiled roof covering, two up and over doors. The garage is partly attached to an outbuilding belonging to the neighbouring property.



There is a printed concrete pathway leading along the front of the house to the entrance door. A tarmac driveway extends along the side of the house and leads to a double garage at the rear of the plot. The driveway provides off road car parking for up to seven cars and there is an additional printed concrete bay at the side of the house providing parking for a further three cars. The rear garden is laid to lawn with shrub borders with mixed shrubs, Silver Birch tree and hedgerows to the rear.



AGENTS NOTE

The property has spray foam insulation installed to the underside of the roof covering. Prospective purchasers should be aware that this may affect a lender's decision and the ability to obtain mortgage lending. Buyers are therefore advised to make their own enquiries with their chosen lender at an early stage.

TENURE

The property is freehold.

SERVICES

Mains water, electricity, gas and drainage are all connected to the property.

VIEWING

Strictly by appointment with the selling agents.

MORTGAGE

Mortgage advice is available through our Mortgage Adviser. Your home is at risk if you do not keep up repayments on a mortgage or other loan secured on it.

POSSESSION

Vacant possession will be given on completion.

COUNCIL TAX

The property comes under South Kesteven Council Tax Band E.



0.17 acres
0.069 ha

MEADOWS CLOSE

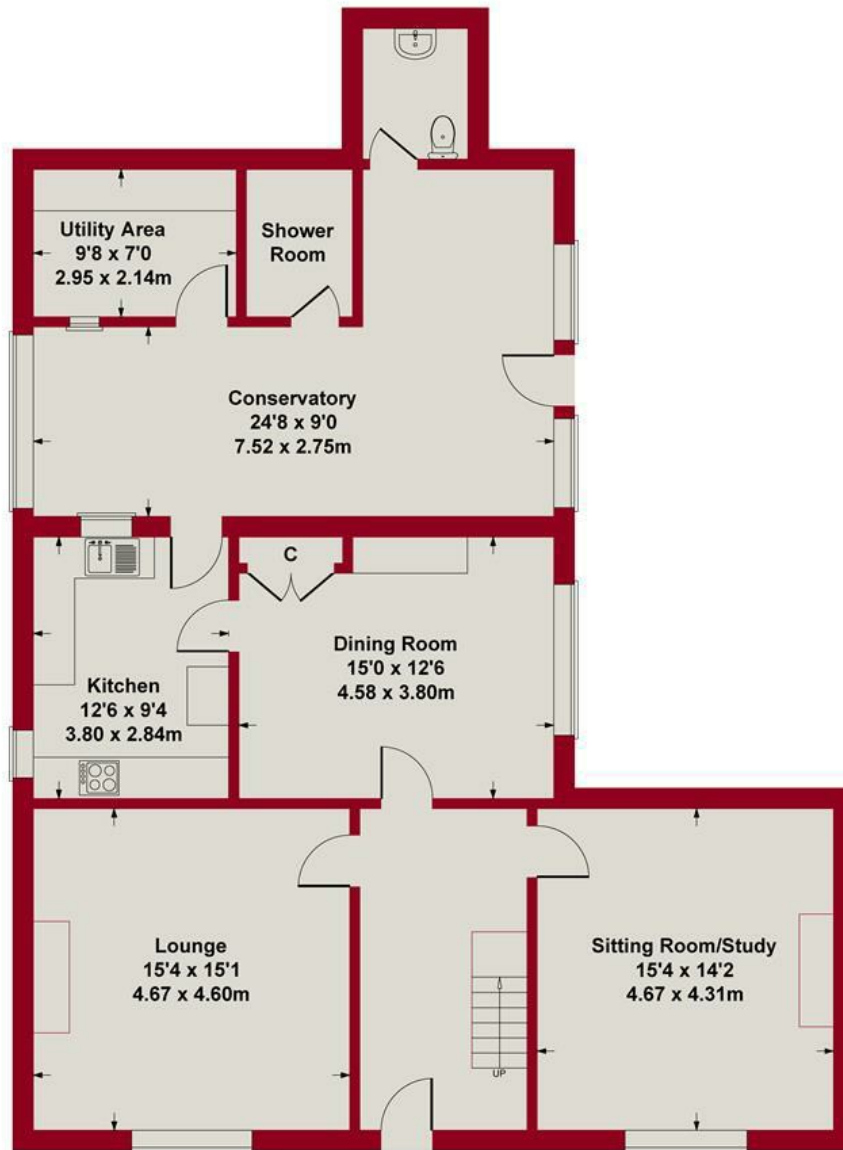
The Chestnuts

Foreman

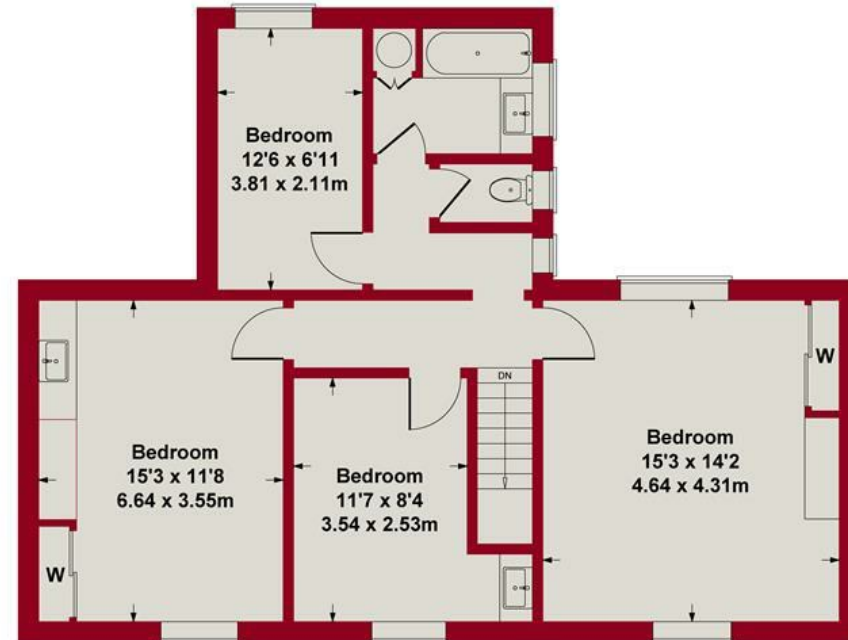
Kypp Cottage

THE MEADOWS





GROUND FLOOR



FIRST FLOOR

SKETCH PLAN FOR ILLUSTRATIVE PURPOSES ONLY

All measurements walls, doors, windows, fittings and appliances, their sizes and locations, are approximate only. They cannot be regarded as being a representation by the seller, nor their agent.

Produced by Potterplans Ltd. 2025





Energy Efficiency Rating		
	Current	Potential
Very energy efficient - lower running costs		
(92 plus) A		
(81-91) B		
(69-80) C		
(55-68) D		
(39-54) E	49	
(21-38) F		
(1-20) G		
Not energy efficient - higher running costs		
England & Wales		EU Directive 2002/91/EC



These particulars, whilst believed to be accurate are set out as a general outline only for guidance and do not constitute any part of an offer or contract. Intending purchasers should not rely on them as statements of representation of fact, but must satisfy themselves by inspection or otherwise as to their accuracy. No person in this firm's employment has the authority to make or give any representation or warranty in respect of the property. Any fixtures and fittings not mentioned in these details are excluded from the sale price. No services or appliances which may have been included in these details have been tested by the selling agent and therefore cannot be guaranteed to be in good working order.

As part of the service we offer we may recommend ancillary services to you such as mortgage advice, solicitors and surveyors which we believe will help with your property transaction. We wish to make you aware that should you decide to proceed we may receive a referral fee or equivalent. This could be a fee, commission, payment or other reward. We will not refer your details unless you have provided consent for us to do so. You are not under any obligation to provide us with your consent or to use any of these services. You are also free to choose an alternative provider.

Thinking of selling? For a FREE no obligation quotation call 01636 611 811



Richard Watkinson & Partners is the trading name of Richard Watkinson Ltd.
Registered in England. Ltd Registration number: 07140024

25 Stodman Street,
Newark NG24 1AT
Tel: 01636 611 811
Email: newark@richardwatkinson.co.uk



Surveyors, Estate Agents, Valuers, Auctioneers