

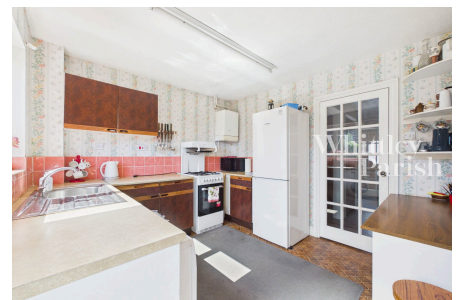
Robinson Road, Scole, Diss IP21 4EF

Guide Price £280,000 - £300,000

3

1

1



Set upon a corner plot position this spacious 3 bedroom detached house, is found upon a small and sought after close lying with close proximity to amenities. Being sold with no onward chain.

Key Features

- Guide Price £280,000 - £300,000
- Off-road parking
- Well served, sought after village
- EPC Rating D
- Spacious corner plot position
- Garage
- Part southerly facing rear garden
- Council Tax Band D

