



Fyfield Road, Brixton, SW9

0 bedroom flat - conversion for sale

£300,000

Leasehold

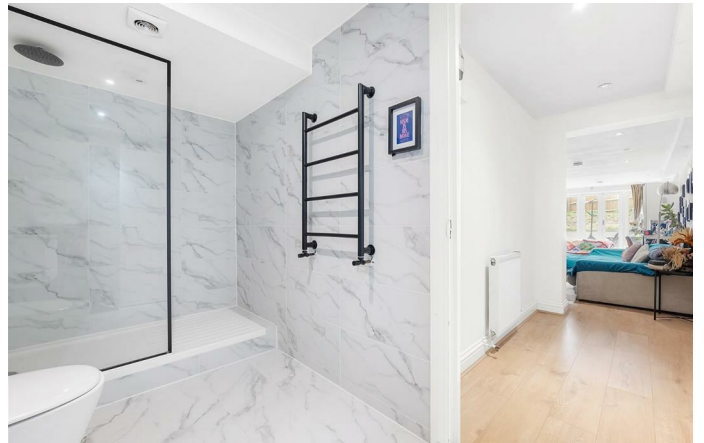
Property Details

A larger-than-average studio apartment set within an elegant converted Victorian building, benefiting from French doors opening directly onto a residents' garden with patio areas, offering a rare indoor-outdoor connection seldom found in studio living. Thoughtfully designed with an intelligent layout, the apartment provides distinct yet seamless spaces for relaxing, dining, entertaining and working from home. The contemporary kitchen is positioned towards the rear, creating a sense of separation while remaining connected to the main living area. Adjacent, a stylish bathroom features a walk-in rainfall shower, striking black fittings and large marbled tiles. The generous reception and sleeping areas flow naturally together, comfortably accommodating a full bedroom setup, wardrobes and a desk or dressing table. French doors bathe the space with natural light and open onto a charming paved patio, perfect for morning coffee, al fresco dining or evening drinks. Framed by a gently sloping lawn with space for flowers and planting, the well-maintained garden also benefits from secure side access, ideal for those with bikes.

Council tax band C EPC rating C (73)

Features

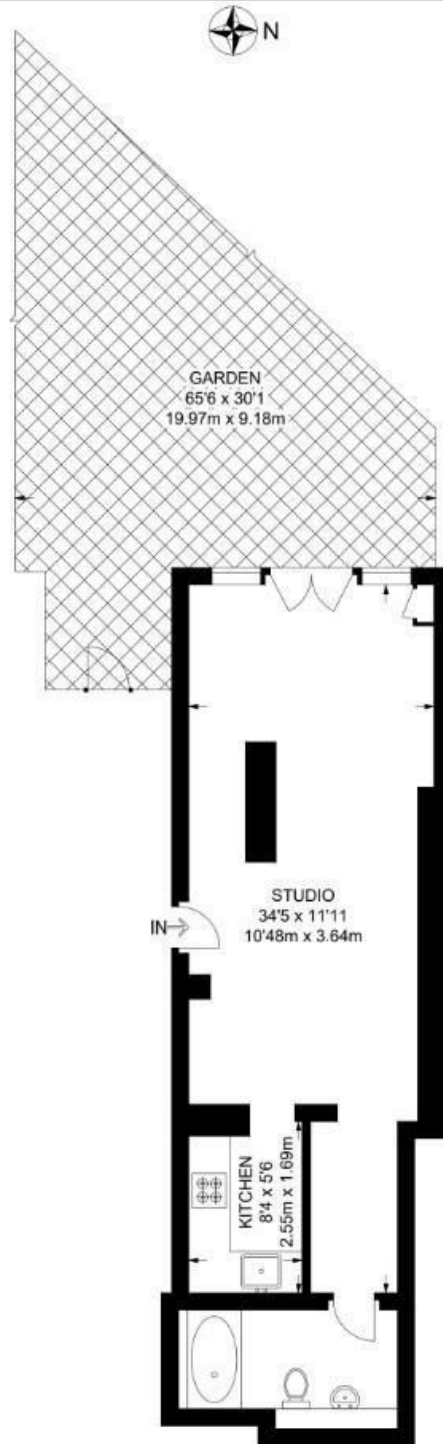
- Spacious studio apartment
- Direct access out to residents' patio and garden
- Victorian conversion
- Larger-than-average at around 450sqft
- Contemporary kitchen and bathroom
- Central Brixton a five-minute stroll
- Victoria Line a ten-minute walk
- Park a three-minute walk
- Chain-free



Fyfield Road, Brixton, SW9

Fyfield Road, SW9
Studio Flat

APPROXIMATE GROSS INTERNAL AREA: 450 SQ FT / 42 SQ M



LOWER GROUND FLOOR



While we try our very best, floor plans are produced as a guide only and we take no responsibility for the precise accuracy with which any property is represented.

Fyfield Road, Brixton, SW9

