



Connells

St. Augustines Close
Torquay



Property Description

Situated in a quiet cul-de-sac location, this beautifully presented six-bedroom semi-detached home offers spacious and versatile accommodation, ideal for modern family living.

The property has been tastefully updated throughout, providing a contemporary finish with bright and airy interiors. The generous layout includes multiple well-proportioned bedrooms, making it perfect for larger families or those needing flexible living space.

Externally, the home benefits from a private driveway providing off-road parking, along with a well-maintained rear garden – ideal for relaxing, entertaining, or family use. A standout feature is the detached annex positioned within the garden, offering excellent potential for guest accommodation, a home office, or independent living.

Located in a desirable residential area of Torquay, the property enjoys a peaceful setting while remaining conveniently close to local amenities, schools, and transport links.



Entrance Hall

Welcoming entrance hall with stairs rising to the first floor and access to main living accommodation.

Kitchen/ Diner

Stylish and contemporary kitchen fitted with a range of modern units and work surfaces, with space for dining and direct access to the rear garden – ideal for entertaining.

Living Room

Bright and spacious living area with a modern finish, offering ample space for seating and a comfortable family environment.

Utility

Space for appliances, worktop and sink.

Shower Room

Modern fitted shower room comprising, shower, WC and wash hand basin.

Bedroom One

Generous double bedroom with plenty of natural light.

Bedroom Two

Well-proportioned double bedroom, ideal for guests or family members.

Bedroom Three

Good-sized bedroom, can be used as a family room/bedroom offering flexibility.

Bedroom Four

Additional bedroom suitable as a child's room or home office.

Bedroom Five

Versatile sixth bedroom, perfect for study, nursery or additional guest space.

Bedroom Six

Versatile fifth bedroom, perfect for study, nursery or additional guest space.

Family Bathroom

Modern fitted bathroom comprising bath with shower over, wash hand basin and WC.

Garden Annex

Detached annex located in the rear garden, providing excellent additional space for a home office, studio, or guest accommodation.

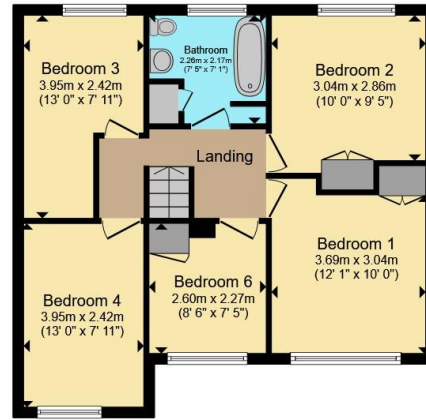
Outside

To the front, a driveway provides off-road parking. The enclosed rear garden is ideal for families and outdoor entertaining.

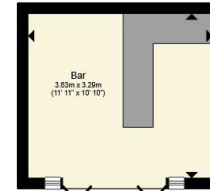




Ground Floor



First Floor



Outbuilding



Total floor area 144.7 m² (1,558 sq.ft.) approx

This floor plan is for illustrative purposes only. It is not drawn to scale. Any measurements, floor areas (including any total floor area), openings and orientation are approximate. No details are guaranteed, they cannot be relied upon for any purpose and they do not form part of any agreement. No liability is taken for any error, omission or misstatement. A party must rely upon its own inspection(s). Powered by www.propertybox.io



To view this property please contact Connells on

T 01803 213 641
E torquay@connells.co.uk

115 Union Street
 TORQUAY TQ1 3DW

EPC Rating: C Council Tax
 Band: D

view this property online connells.co.uk/Property/TQY315157

Tenure: Freehold



1. MONEY LAUNDERING REGULATIONS Intending purchasers will be asked to produce identification documentation at a later stage and we would ask for your co-operation in order that there will be no delay in agreeing the sale. 2. These particulars do not constitute part or all of an offer or contract. 3. The measurements indicated are supplied for guidance only and as such must be considered incorrect. Potential buyers are advised to recheck measurements before committing to any expense. 4. We have not tested any apparatus, equipment, fixtures, fittings or services and it is in the buyers interest to check the working condition of any appliances.

Connells Residential is registered in England and Wales under company number 1489613, Registered Office is Cumbria House, 16-20 Hockliffe Street, Leighton Buzzard, Bedfordshire, LU7 1GN. VAT Registration Number is 500 2481 05.

See all our properties at www.connells.co.uk | www.rightmove.co.uk | www.zoopla.co.uk

Property Ref: TQY315157 - 0005