



8 Violet Way, Holmes Chapel, CW4 7FY

In Excess of £362,000

**GASCOIGNE  
HALMAN**

THE AREA'S LEADING ESTATE AGENCY

# 8 Violet Way

Holmes Chapel

Modern 3-bed detached home within the sought after Bluebell Green development. Features en suite, home office, garage storage, off-road parking, stylish kitchen, and spacious living areas.

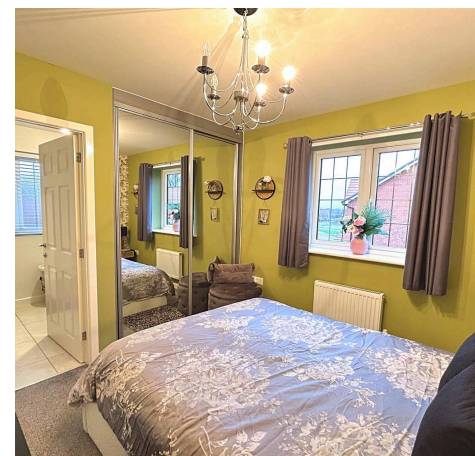
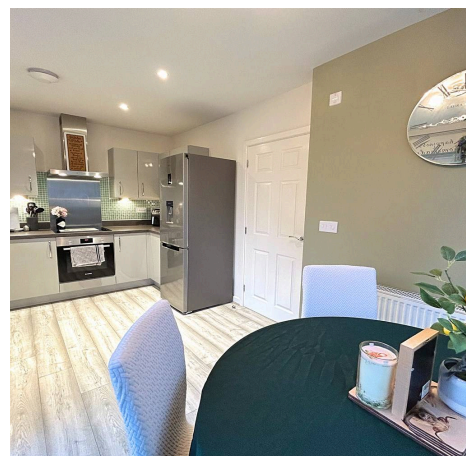
Council Tax band: D

Tenure: Freehold

EPC Energy Efficiency Rating: B

EPC Environmental Impact Rating: B

- A freehold property constructed by Bloor Homes
- Partition wall created in the garage to provide an office area and storage
- Living room along with a kitchen diner with French doors opening to the garden
- Family bathroom, en-suite shower room and a downstairs WC
- Bedroom three currently used as a dressing room
- Three bedrooms, the master bedroom with built in wardrobes
- Located within a sought after development in Holmes Chapel
- Ample off road parking



## 8 Violet Way

### Holmes Chapel

This beautifully presented three bedroom detached house is situated on the highly sought-after Bluebell Green Development in Holmes Chapel.

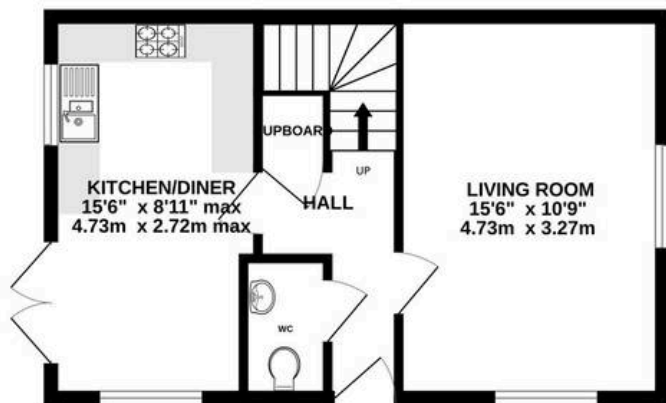
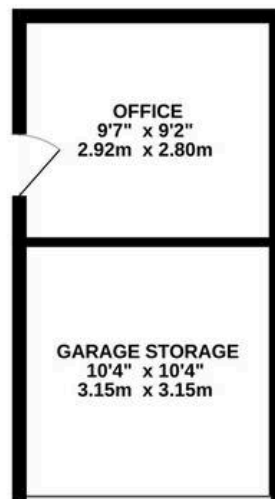
Tastefully decorated throughout, the property boasts a welcoming entrance hall that leads to a spacious living room featuring contemporary finishes and ample natural light. The modern kitchen diner is well appointed with quality fittings, integrated dishwasher and space for appliances, providing a perfect space for family meals or entertaining guests. The dining area enhances the sense of space and versatility, while a convenient downstairs cloakroom adds to the practicality of the layout.

Upstairs, there are three generously sized bedrooms, including a principal bedroom with fitted wardrobes and a stylish en suite shower room. The further two bedrooms are well proportioned and served by a sleek family bathroom, finished with modern tiling and fixtures (ideal for busy households). One of the standout features of this home is the garage, which has been thoughtfully divided to provide both valuable storage space and a dedicated home office, catering perfectly to the needs of those working remotely.

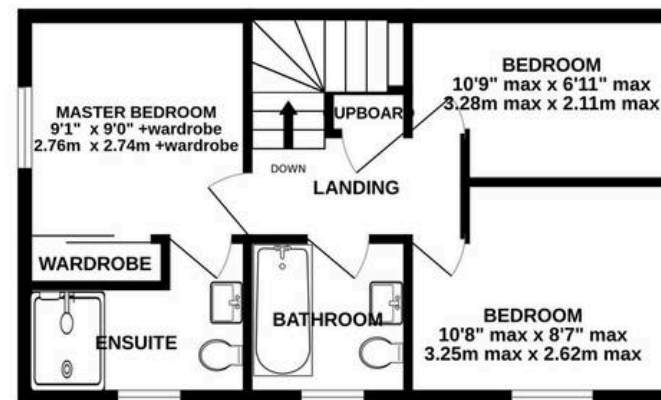
The property also benefits from ample off road parking, ensuring convenience for homeowners and visitors alike. Early viewing is highly recommended to appreciate the quality and versatility this superb home has to offer.



GROUND FLOOR  
590 sq.ft. (54.8 sq.m.) approx.



1ST FLOOR  
409 sq.ft. (38.0 sq.m.) approx.



TOTAL FLOOR AREA : 999 sq.ft. (92.8 sq.m.) approx.  
Measurements are approximate. Not to scale. Illustrative purposes only  
Made with Metropix ©2026



THE AREA'S LEADING ESTATE AGENCY