



£775,000 Offers Over Greenford Avenue, Hanwell, W7



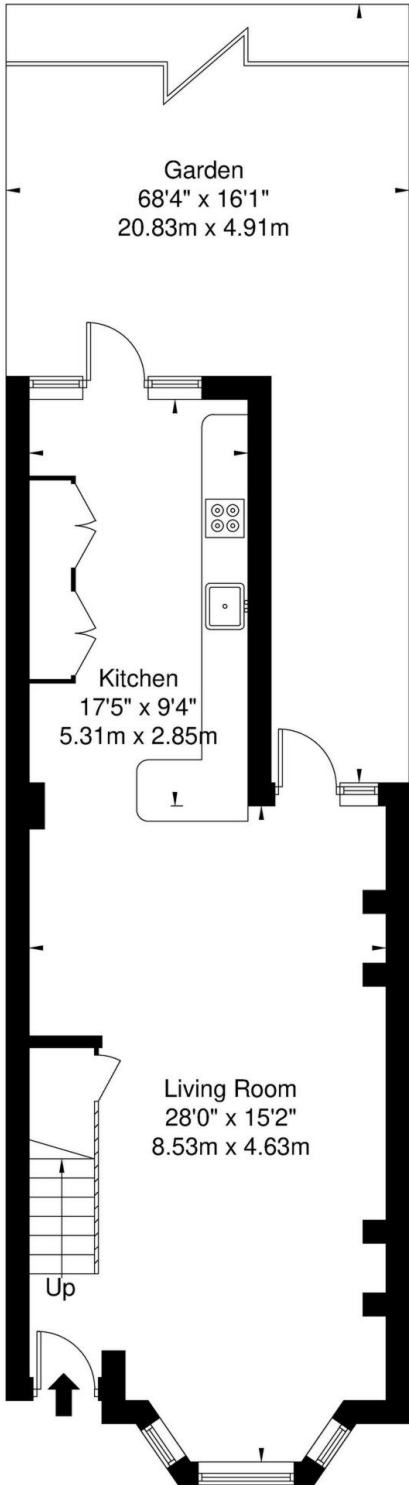
- Off Street Parking
- 1,323 Sq Ft
- 2 Bathrooms
- 3 Bedrooms
- Almost 70 ft Garden
- Close To Elizabeth Line

An elegant and superbly presented 3 bedroom Victorian family home with off street parking close to Hanwell station. The ground floor accommodation comprises bay fronted reception with fitted shutters, rear dining area and stunning extended kitchen with breakfast bar area. On the first floor there are 2 bedrooms and family bathroom. The top floor boasts a magnificent main bedroom with shower room, meditation area and fitted wardrobes. Further benefits include almost 70 ft private rear garden, triple glazing to the front, wood burning stove, period features and enviable off street parking. This stunning home falls into an excellent school catchment, a short walk to Hanwell station (Elizabeth line), perfect for bus routes, road networks, Bunny Park and local shops.



Greenford Avenue, W7

Approx. Gross Internal Area = 122.9 sq m / 1323 sq ft



Garden
68'4" x 16'1"
20.83m x 4.91m

Kitchen
17'5" x 9'4"
5.31m x 2.85m

Living Room
28'0" x 15'2"
8.53m x 4.63m

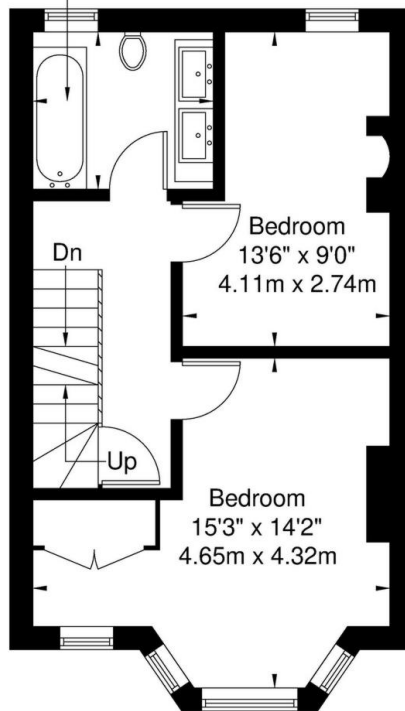
Up

Ground Floor

Ref



Bathroom
7'9" x 6'9"
2.37m x 2.07m



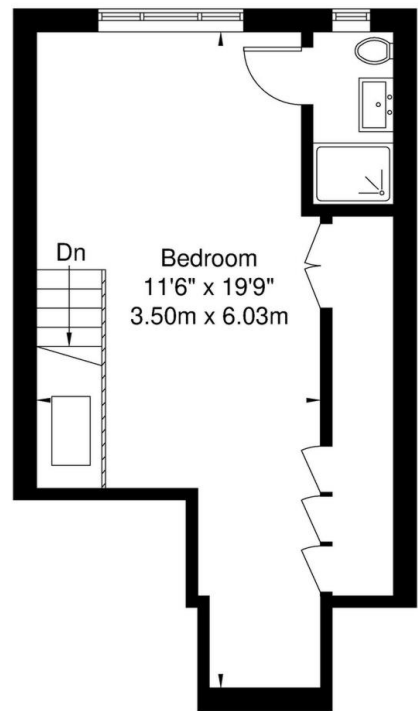
Bedroom
13'6" x 9'0"
4.11m x 2.74m

Bedroom
15'3" x 14'2"
4.65m x 4.32m

Dn

Up

First Floor



Bedroom
11'6" x 19'9"
3.50m x 6.03m

Dn

Second Floor

Copyright

**BLEU
PLAN**

Disclaimer : Floor plan measurements are approximate and are for illustrative purposes only. While we do not doubt the floor plan accuracy and completeness, you or your advisors should conduct a careful, independent investigation of the property in respect of monetary valuation.

Map



VIEWING BY APPOINTMENT WITH AGENTS DOYLE SALES & LETTINGS

11 Broadway Buildings, Boston Rd, Hanwell, London, W7 3TT T: 020 8840 0171 E: info@doylesalesandlettings.co.uk W: www.doylesalesandlettings.co.uk

General: While we endeavour to make our sales particulars fair, accurate and reliable, they are only a general guide to the property and, accordingly, if there is any point which is of particular importance to you, please contact the office and we will be pleased to check the position for you, especially if you are contemplating travelling some distance to view the property.

Measurements: These approximate room sizes are only intended as general guidance. You must verify the dimensions carefully before ordering carpets or any built-in furniture.

Services: Please note we have not tested the services or any of the equipment or appliances in this property, accordingly we strongly advise prospective buyers to commission their own survey or service reports before finalizing their offer to purchase.

THESE PARTICULARS ARE ISSUED IN GOOD FAITH BUT DO NOT CONSTITUTE REPRESENTATIONS OF FACT OR FORM PART OF ANY OFFER OR CONTRACT. THE MATTERS REFERRED TO IN THESE PARTICULARS SHOULD BE INDEPENDENTLY VERIFIED BY PROSPECTIVE BUYERS OR TENANTS. NEITHER DOYLE SALES & LETTINGS NOR ANY OF ITS EMPLOYEES OR AGENTS HAS ANY AUTHORITY TO MAKE OR GIVE ANY REPRESENTATION OR WARRANTY WHATEVER IN RELATION TO THIS PROPERTY.

YOUR HOME IS AT RISK IF YOU DO NOT KEEP UP REPAYMENTS ON A MORTGAGE OR OTHER LOAN SECURED ON IT.

Written quotations available on request. All loans secured on property. Life assurance is usually required.

EPC Rating D

