



**Leasehold / Apartment**

## Azalea Close

### £320,000

A keenly priced two bedroom, third floor apartment which is conveniently located on the borders of Ealing and Hanwell with off street parking and communal grounds. In need of some improvements and offered chain free.

- Third Floor Apartment
- Two Double Bedrooms
- Large Reception
- Gas Central Heating
- Double Glazing
- Convenient Location
- Close To Hanwell Elizabeth Line
- Communal Grounds
- Gated Parking
- Chain Free







**Leasehold / Apartment**

# Azalea Close, W7 3QA

## £320,000

This third (top) floor apartment offers light and spacious accommodation throughout including a large reception, separate kitchen, two good size bedrooms and bathroom. Whilst benefiting from an entry phone system, gas central heating and double glazing further improvements are required to enhance this apartment.

Outside are well tended communal grounds plus gated residents only parking spaces. With the security of a long lease and offered chain free, in our opinion this apartment would make an ideal first time purchase.

Conveniently located just off the Uxbridge Road within easy walking distance of both Hanwell and West Ealing Elizabeth Line Stations offering speedy access into Central London. A good selection of local shops, supermarkets, eateries and regular bus links are all close at hand.



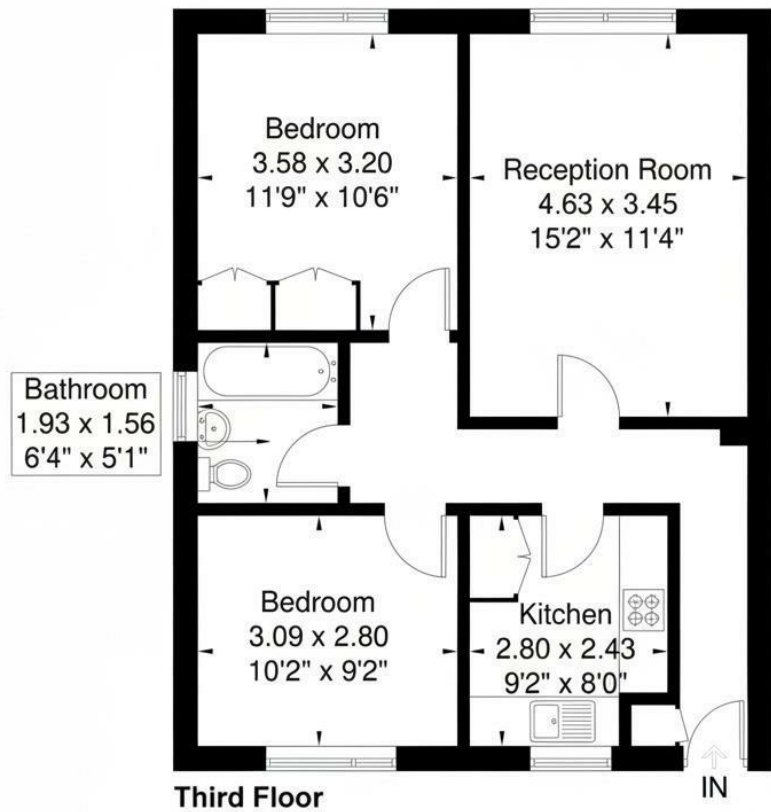


19 Greenford Avenue, Hanwell, London, W7 1LD  
020 8567 3219



### Azalea Close W7 3QA

Approximate Gross Internal Area = 58.8 sq m / 632 sq ft

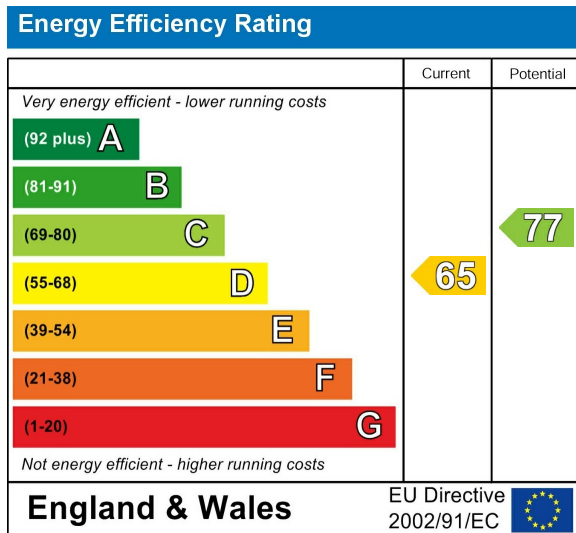


Although every attempt has been made to ensure accuracy, all measurements are approximate.  
The floorplan is for illustrative purposes only and not to scale.

Council Tax Band

**C**

Energy Performance Graph



Call us on

**020 8567 3219**

[hanwellsales@sintonandrews.co.uk](mailto:hanwellsales@sintonandrews.co.uk)

[www.sintonandrews.co.uk](http://www.sintonandrews.co.uk)

Agents Note: Whilst every care has been taken to prepare these particulars, they are for guidance purposes only. All measurements are approximate and are for general guidance purposes only and whilst every care has been taken to ensure their accuracy, they should not be relied upon and potential buyers are advised to recheck the measurements.