



Apartment 11 Lynthorpe House, Sheffield S1 4AU



Lettings

Apartment 11 Lynthorpe

Per Month

£1,060 Per Month

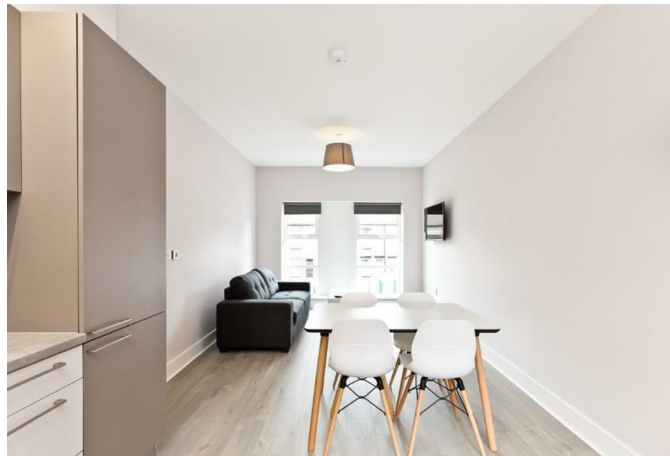
Modern two double bedroom student apartments ideally located near local amenities, universities, and hospitals, available for the 2026 to 2027 academic year.

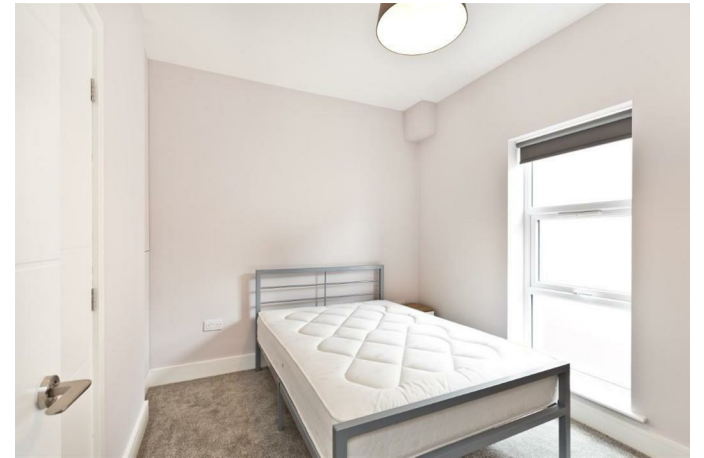
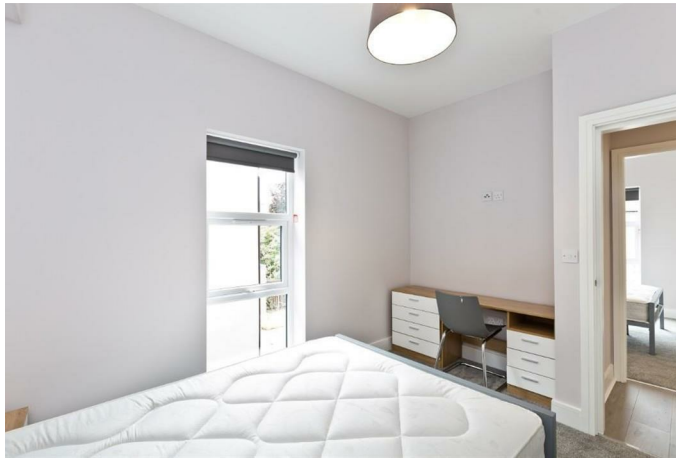
Each apartment offers a spacious open plan living area featuring a Karl Benz kitchen, integrated appliances, and a TV in the lounge. Both bedrooms are well sized doubles and include their own en suite shower rooms.

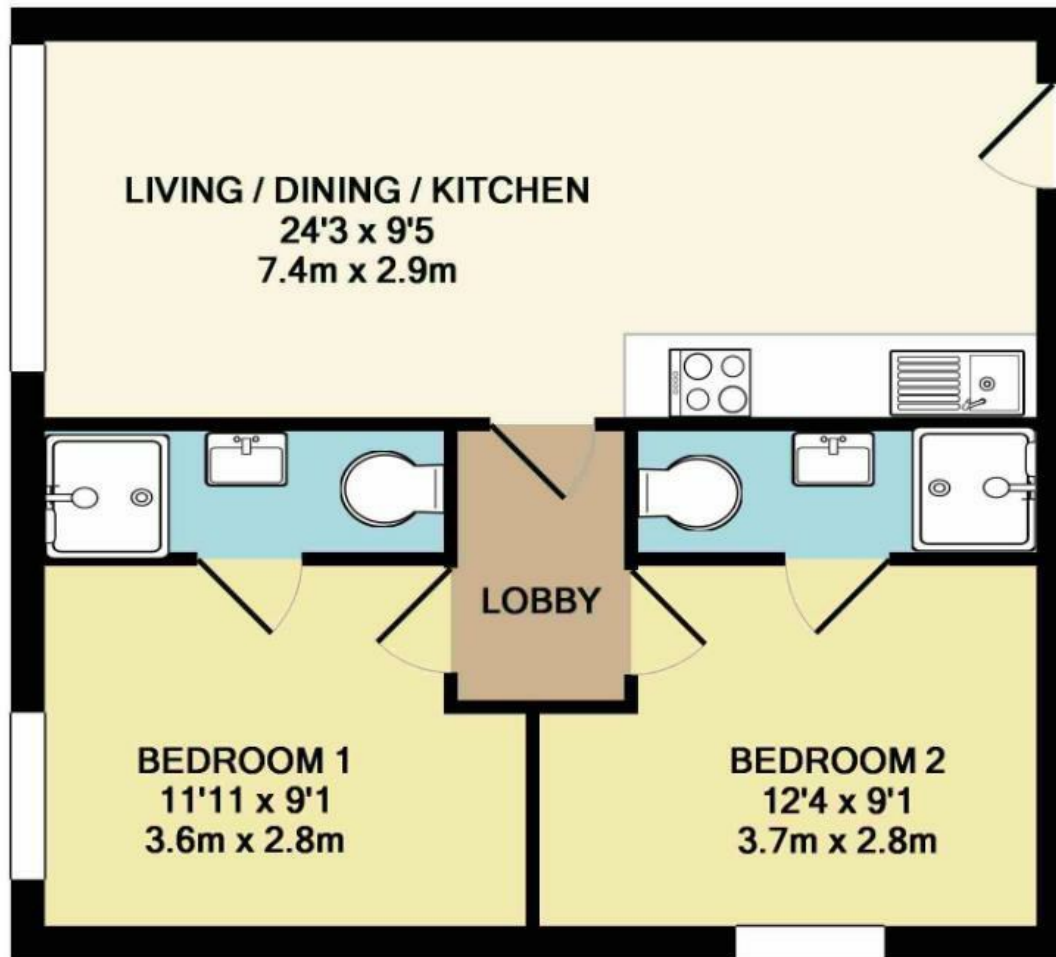
The development is gated, with parking spaces available to rent on a first come, first served basis.

The properties also benefit from gas central heating and double glazing throughout.

- Spacious Open Plan Living
- Karl Benz Kitchen
- Gated Development
- TV Included
- Double Glazing
- Integrated Kitchen Appliances
- Gas Central Heating
- Recently Built
- Convenient Location
- Modern Furnishings Description







TOTAL APPROX. FLOOR AREA 526 SQ.FT. (48.8 SQ.M.)
 Measurements are approximate. Not to scale. Illustrative purposes only
 Made with Metropix ©2018

While we endeavour to make our sales particulars fair, accurate and reliable, they are only a general guide to the property and, accordingly, if there is any point, which is of particular importance to you, please contact the relevant office. The Agents have not tested any apparatus, equipment, fittings or services and so cannot verify they are in working order. The buyer is advised to obtain verification. Please note all the measurement details are approximate and should not be relied upon as exact. All plans, floor plans and maps are for guidance purposes only and are not to scale. Under no circumstances should they be relied upon as exact or for use in planning carpets and other such fixtures, fittings or furnishings. YOUR HOME IS AT RISK IF YOU DO NOT KEEP UP REPAYMENTS ON A MORTGAGE OR OTHER LOAN SECURED ON IT. 'A Life Assurance policy may be requested.' 'Written Quotations of credit terms available on request.'

Banner Cross
 T: 0114 268 3241
 E: bannercross@saxtonmee.co.uk
www.saxtonmee.co.uk

Hathersage
 T: 01433 650009
 E: hathersage@saxtonmee.co.uk

Bakewell
 T: 01629 815307
 E: bakewell@saxtonmee.co.uk

Matlock
 T: 01629 828250
 E: matlock@saxtonmee.co.uk



Lettings