



Arlington Park Mansions, London, W4

Guide Price £450,000

**WHITMAN & CO.**

SALES · LETTINGS · COMMERCIAL

- Spacious reception room
- Double bedroom
- Luxury bathroom
- Fully fitted kitchen
- Long lease and a share in the freehold
- No onward chain

Tenure - Leasehold with share of freehold  
 Lease length - 960 years remaining  
 Ground rent - peppercorn  
 Service charge - £4040 pa  
 Local authority - Hounslow  
 Council tax - Band D

## THE PROPERTY

A light and spacious one-bedroom purpose-built flat set within this landmark mansion block, overlooking Turnham Green and beyond to Christ's Church.

The accommodation provides a spacious 16.10' reception room, 17.6' double bedroom, luxury bathroom and fully fitted kitchen.

With high ceilings and a host of original features, a long lease and a share in the freehold.

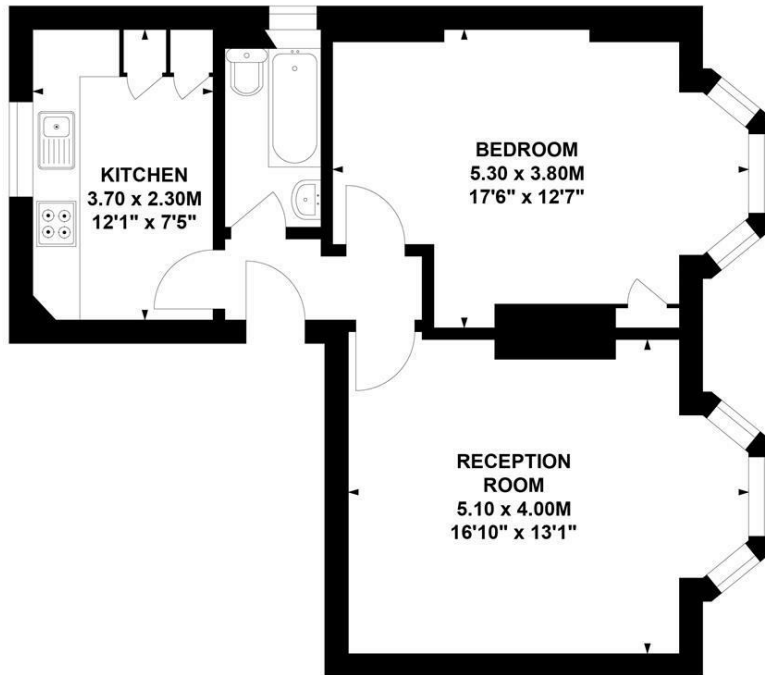
Ideally situated at the west end of Turnham Green, and offering close proximity to tube, bus and retail services as well as the exclusive shops, bars and restaurants on Chiswick High Road. Offered for sale with no onward chain.

## Arlington Park Mansions, W4

Approximate Gross Internal Area  
**50.00 sq m / 538 sq ft**



Key :  
 CH - Ceiling Height



### Second Floor

Not to scale, for guidance only and must not be relied upon as a statement of fact.  
 All measurements and areas are approximate only

## SITUATION



5-7 Turnham Green Terrace, Chiswick, London, W4 1RG

Tel 020 8747 8800

E-mail [sales@whitmanandco.com](mailto:sales@whitmanandco.com)

Website [www.whitmanandco.com](http://www.whitmanandco.com)