



St Marys Terrace

London, W2

£4,950 per month
(£1,142.31 per week)

This stunning three double bedroom apartment is situated on the raised ground floor and garden level within this period conversion. The property comprises; double reception room, dining room, kitchen, three double bedrooms and two bathrooms.

CHESTERTONS



St Marys Terrace

London, W2

- Brand Newly Refurbished
- Lovely Period Conversion
- Large Reception & Open Plan Kitchen Leading To Dining Room
- Three Good Size Double Bedrooms
- Patio Garden
- Moments To Paddington Station

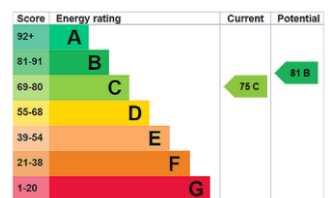


This stunning three double bedroom apartment is situated on the raised ground floor and garden level within this impressive period conversion. The property comprises; double reception room, dining room, integrated kitchen, three double bedrooms and two bathrooms.

This spacious apartment further benefits; high ceilings, wooden flooring, study, utility room and private patio. The property is offered unfurnished and available November.

St Marys Terrace is ideally located moments to the Canal and the amenities of Clifton Road as well as Paddington Mainline station.

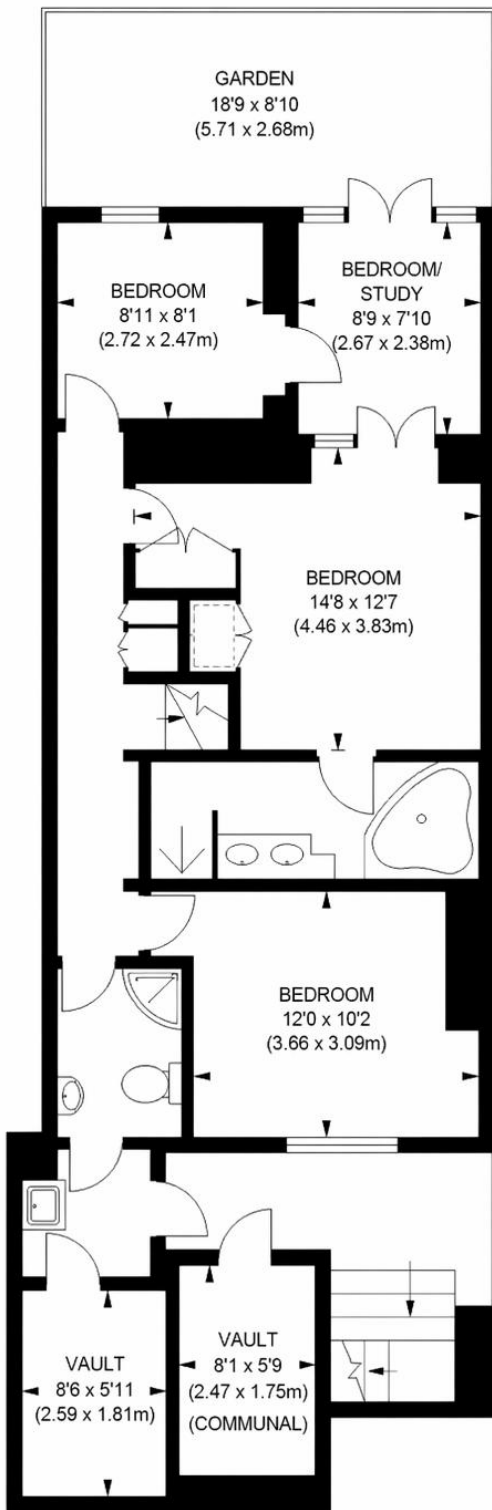
Minimum Term: 12 months
Deposit Required: 6 weeks
Local Authority: City of Westminster
Council Tax Band: E
EPC Rating: C
Unfurnished



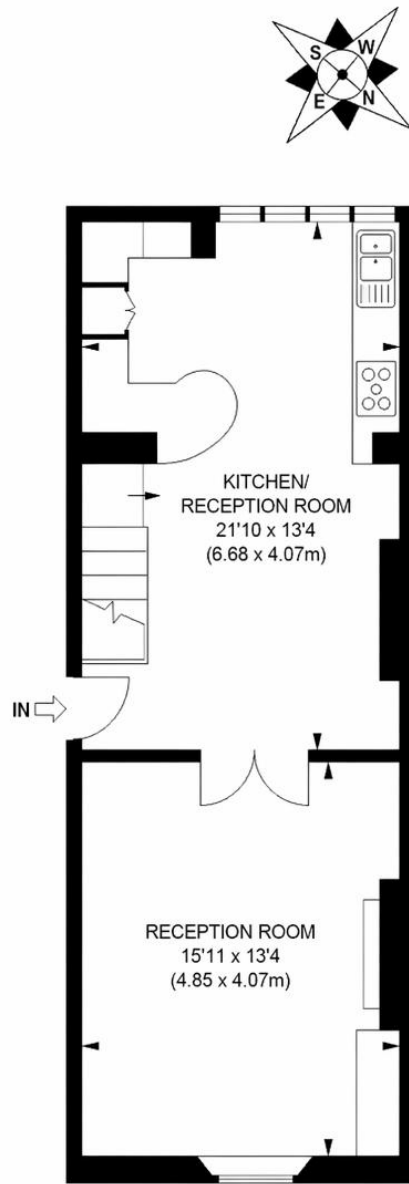
Chestertons Little Venice Lettings

26 Clifton Road
 Maida Vale
 London
 W9 1SX
 littlevenicelettingsusers@chestertons.co.uk
 02072662369
 chestertons.co.uk

Additional tenant charges apply (fees apply to non-AST tenancies only)
 Tenancy Agreement Fee: £300
 References per Tenant/Guarantor: £60
 Inventory check (approx. £100 – £250 inc. VAT)
chestertons.co.uk/property-to-rent/applicable-fees



LOWER GROUND FLOOR



RAISED GROUND FLOOR

APPROX. GROSS INTERNAL FLOOR AREA 1250 SQ FT / 116.13 SQ M

Illustration for identification purposes only, not to scale
 All measurements are maximum, and includes wardrobes and window bays where applicable
 © Tel 020 8870 2118

