



Seaton Close, SW15

£4,250 Per calendar month

A stunning four bedroom Georgian style property set within the beautiful grounds of one the most sought after private developments in Putney. The property offers an separate and spacious Kitchen, private patio, rear garden, parking and a large garage.

Seaton Close is part of the Lynden Gate development which is a secure, private gated development with on-site portorage. It is located by Putney Heath and is within close proximity of Wimbledon Common.

Features

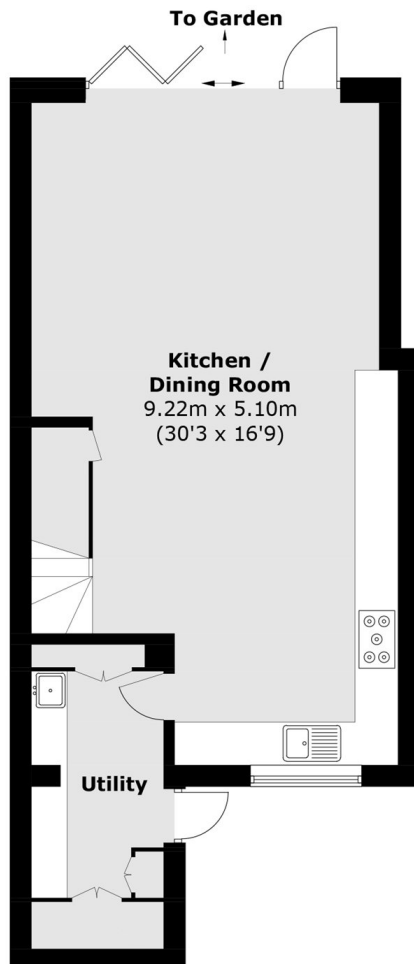
- Four Bedroom House
- Two Bathrooms Suites
- Two Receptions
- Integrated Kitchen
- Wood Floor
- Private Rear Garden



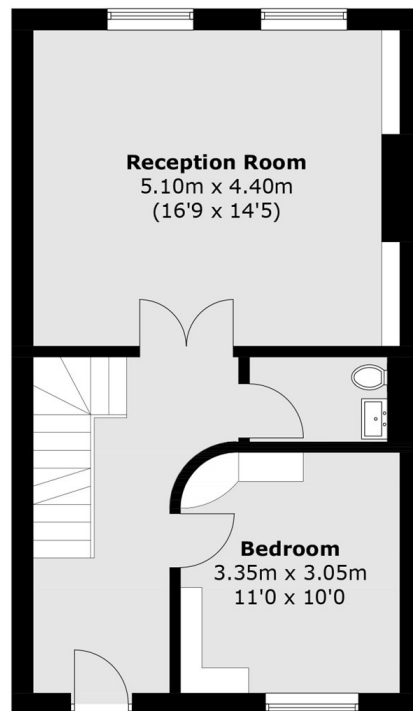
Seaton Close, SW15



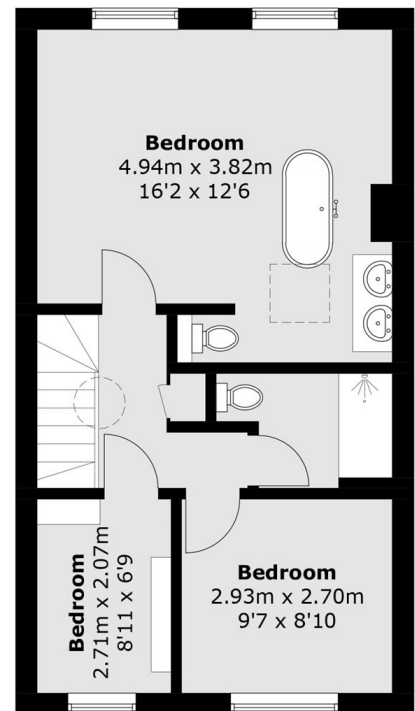
Seaton Close, London, SW15



Ground Floor



First Floor



Second Floor

Total area (approx.): 144.4 sq. m (1,554.3 sq. ft)