

Summerstown, Earlsfield, SW17

Guide Price £550,000 - £625,000

3 2 1



PLEASE QUOTE JW0326 - GUIDE PRICE £550K - £625K – Ideally situated on the borders of Wimbledon, Earlsfield and Tooting, this well presented three bedroom fifth floor apartment (1,063 Sq.Ft) with private balcony and lift access, set within a sought after modern development. The property offers bright and spacious accommodation with stylish interiors and high quality finish throughout - the perfect blend of comfort and convenience for a modern lifestyle in this fantastic residential location. Features include a wonderful open plan reception/fitted kitchen, two bath/shower rooms (one en-suite), inbuilt storage, electric heating, double glazing, and secure entry.

Key Features

- PLEASE QUOTE JW0326
- STUNNING 3 BED, 2 BATH 5TH FLOOR APARTMENT (1,063 SQ.FT)
- SOUGHT AFTER MODERN DEVELOPMENT
- HIGH QUALITY FINISH
- LIGHT AND SPACIOUS OPEN PLAN RECEPTION/HIGH GLOSS KITCHEN
- PRIVATE BALCONY
- LIFT ACCESS
- SECURE ENTRY
- CLOSE TO EXCELLENT TRANSPORT LINKS
- EASY ACCESS SHOPS, SCHOOLS AND AMENITIES

Norah House

Approximate Gross Internal Area = 98.8 sq m / 1063 sq ft
Including Limited Use Area (1.5 sq m / 16 sq ft)

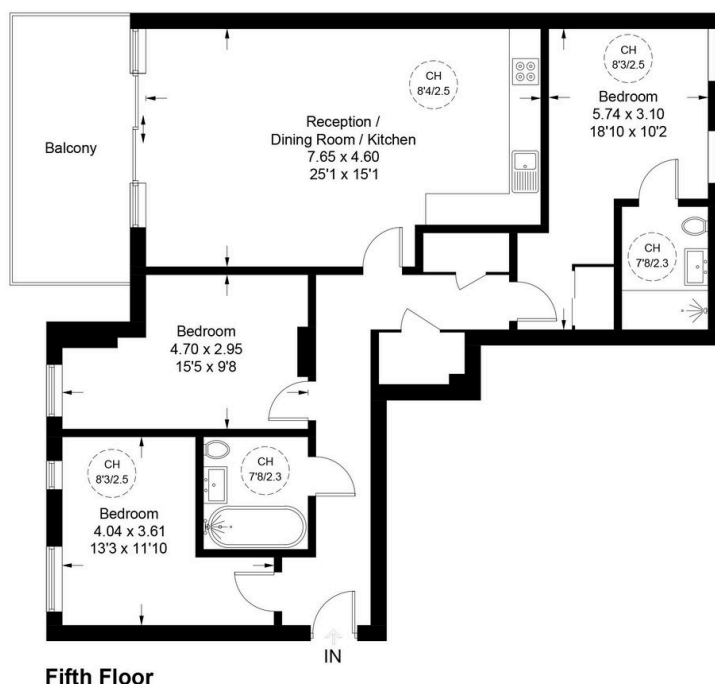


Illustration for identification purposes only, not for valuation purposes, measurements are approximate, not to scale. IPMS2