



**Meridian Plaza Bute Terrace, Cardiff CF10 2FP**

**welcome to**

## **Meridian Plaza Bute Terrace, Cardiff**

### **Hall**

Laminate wood flooring, access to all rooms.

### **Bedroom**

9' 9" Max x 9' 7" Max ( 2.97m Max x 2.92m Max )

Carpeted, spot lights, storage cupboard, double glazed window to side.

### **Dining/Reception Room**

13' 1" Max x 13' 1" Max ( 3.99m Max x 3.99m Max )

Spot lights, laminate wood flooring, floor to ceiling double glazed windows.

### **Kitchen**

8' 10" Max x 6' 9" Max ( 2.69m Max x 2.06m Max )

Wall and base units, oven, hob, extractor hood with splash back, spot lights, tiled walls, laminate wood flooring

### **Utility**

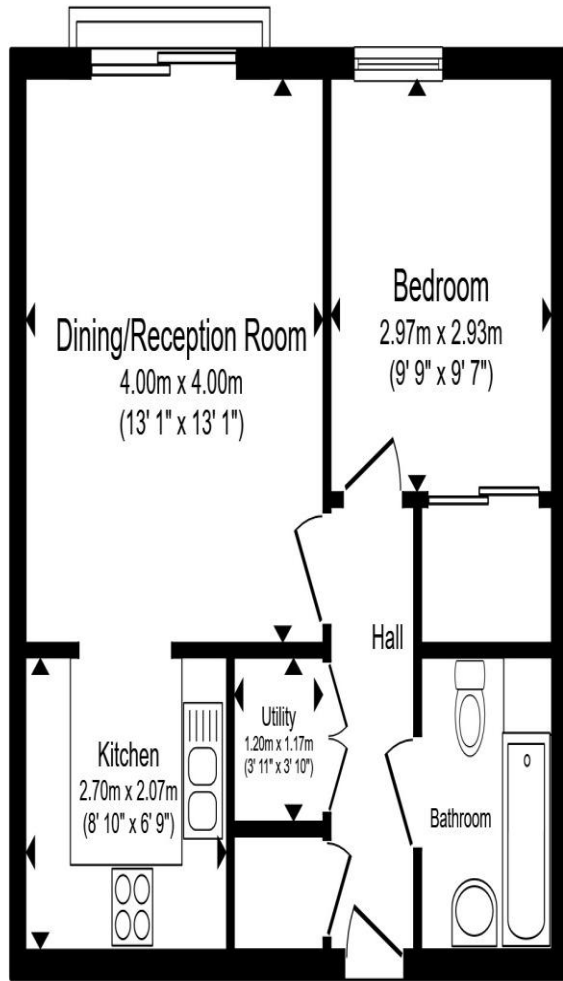
3' 11" Max x 3' 10" Max ( 1.19m Max x 1.17m Max )

Laminate wood flooring, plumbing for washing machine, air purifier, water tank.

### **Bathroom**

Tiled floor and walls, W.C, hand wash basin, bath with over head shower, glass shower screen.

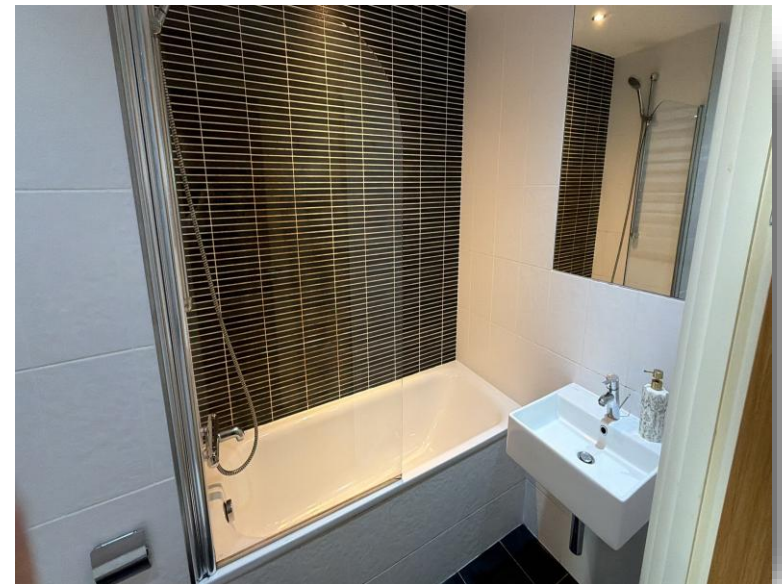
Modern one-bedroom apartment in the sought-after Meridian Plaza, featuring open-plan living, a stylish kitchen, double bedroom with built-in storage, and contemporary bathroom—ideal for city living.



**Floor Plan**

Total floor area 43.6 m<sup>2</sup> (470 sq.ft.) approx

This floor plan is for illustrative purposes only. It is not drawn to scale. Any measurements, floor areas (including any total floor area), openings and orientation are approximate. No details are guaranteed, they cannot be relied upon for any purpose and they do not form part of any agreement. No liability is taken for any error, omission or misstatement. A party must rely upon its own inspection(s). Powered by [www.propertybox.io](http://www.propertybox.io)



**welcome to**  
**Meridian Plaza Bute Terrace,**  
**Cardiff**

- Sought-after Meridian Plaza development
- Central Cardiff location
- Open-plan living and kitchen area
- Double bedroom with built-in storage
- Modern bathroom suite

Tenure: Leasehold EPC Rating: B  
Council Tax Band: D Service Charge: 4000.00  
Ground Rent: 200.00

This is a Leasehold property with details as follows; Term of Lease 999 years from 25 Dec 2008. Should you require further information please contact the branch. Please Note additional fees could be incurred for items such as Leasehold packs.

**£150,000**



**check out more properties at [allenandharris.co.uk](http://allenandharris.co.uk)**



Property Ref:  
CRP108207 - 0003

1. MONEY LAUNDERING REGULATIONS Intending purchasers will be asked to produce identification documentation at a later stage and we would ask for your co-operation in order that there is no delay in agreeing the sale. 2. These particulars do not constitute part or all of an offer or contract. 3. The measurements indicated are supplied for guidance only and as such must be considered incorrect. Potential buyers are advised to recheck measurements before committing to any expense. 4. We have not tested any apparatus, equipment, fixtures or services and it is in the buyers interest to check the working condition of any appliances. 5. Where an EPC, or a Home Report (Scotland only) is held for this property, it is available for inspection at the branch by appointment. If you require a printed version of a Home Report, you will need to pay a reasonable production charge reflecting printing and other costs. 6. We are not able to offer an opinion either written or verbal on the content of these reports and this must be obtained from your legal representative. 7. Whilst we take care in preparing these reports, a buyer should ensure that his/her legal representative confirms as soon as possible all matters relating to title including the extent and boundaries of the property and other important matters before exchange of contracts.

Allen & Harris is a trading name of Sequence (UK) Limited which is registered in England and Wales under company number 4268443, Registered Office is Cumbria House, 16-20 Hockliffe Street, Leighton Buzzard, Bedfordshire, LU7 1GN. VAT Registration Number is 500 2481 05.



**029 2022 5700**



[Pontcanna@allenandharris.co.uk](mailto:Pontcanna@allenandharris.co.uk)



209 Cathedral Road, Pontcanna, CARDIFF,  
South Glamorgan, CF11 9PN



[allenandharris.co.uk](http://allenandharris.co.uk)