

Queens Walk

Ruislip • Middlesex • HA4 0NW

Guide Price: £715,000



coopers
est 1986

Queens Walk

Ruislip • Middlesex • HA4 0NW

Situated on the ever-popular Queen's Walk in South Ruislip, this well-presented three-bedroom semi-detached family home offers generous living accommodation, excellent potential and a highly desirable south-westerly facing rear garden. The ground floor comprises a welcoming entrance hallway, a spacious living room to the front of the property, a separate dining room and a large open-plan kitchen/diner overlooking the rear garden, creating an ideal space for both everyday family living and entertaining. A useful utility area and ground floor W.C. add further practicality. To the first floor are three well-proportioned bedrooms, including two generous double bedrooms and a good-sized single bedroom, all served by a modern family bathroom and separate W.C. Externally, the property benefits from a substantial driveway providing off-street parking for multiple vehicles. To the rear is a private south-westerly facing garden, enjoying plenty of afternoon and evening sunshine and offering an excellent outdoor space for families and entertaining. Queen's Walk is conveniently located within easy reach of South Ruislip's shopping and transport facilities, including South Ruislip Station (Central Line and Chiltern Railways), local schools, parks and amenities, making it an ideal choice for families and commuters alike.

SEMI DETACHED HOUSE

THREE BEDROOMS

LIVING ROOM

KITCHEN/DINING ROOM

FAMILY BATHROOM

LARGE DRIVEWAY

WEST FACING GARDEN

EXTENDED TO THE REAR

GREAT CONDITION THROUGHOUT

1,119 SQ.FT. TOTAL

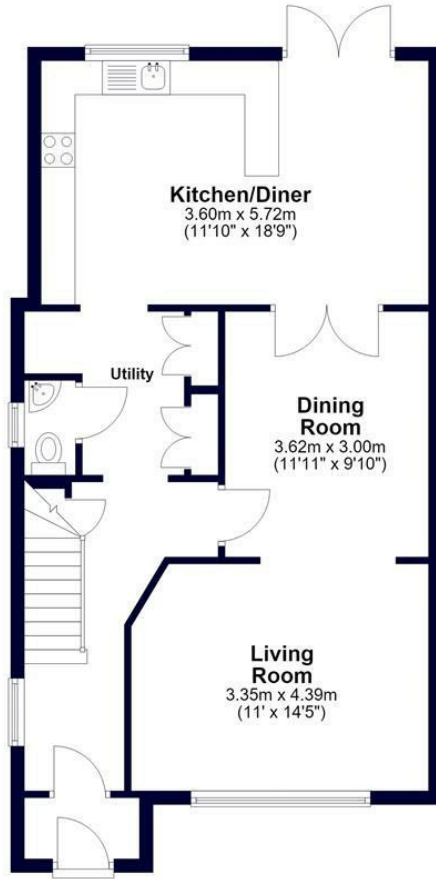
These particulars are intended as a guide and must not be relied upon as statements of fact. Your attention is drawn to the Important Notice on the last page.





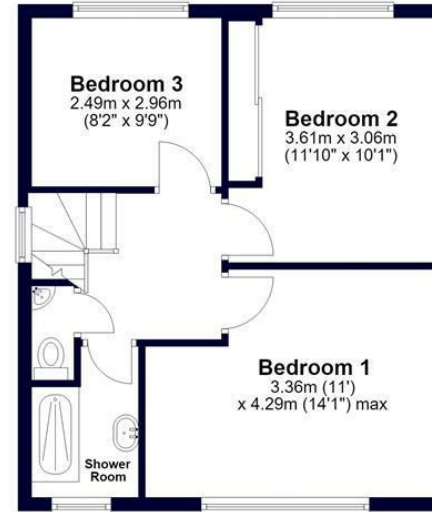
Ground Floor

Approx. 65.0 sq. metres (699.5 sq. feet)



First Floor

Approx. 39.0 sq. metres (420.0 sq. feet)
(excluding Shower Room)



Total area: approx. 104.0 sq. metres (1119.4 sq. feet)

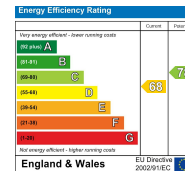


Whilst every effort has been made to ensure the accuracy of this floor plan, measurements of doors, windows, rooms and other items are approximate and no responsibility is taken for any errors. This plan is for illustrative purposes only and should be used as such by any prospective purchaser.
©Property Pot. Produced on behalf of Coopers Residential.



71 Victoria Road, Ruislip Manor,
Middlesex, HA4 9BH
ruislipmanor@coopersresidential.co.uk

CoopersResidential.co.uk



Important Notice: These particulars, whilst believed to be accurate are set out as a general outline only for guidance and do not constitute any part of an offer or contract. Intending purchasers should not rely on them as statements or representation of fact, but must satisfy themselves by inspection or otherwise has the authority to make or give any representation or warranty in respect of the property.