



**The Copse, Fetcham, KT22**

Leatherhead

**£2,900 pcm**

**Deposit:** £3,346

**Date First Available:** 01/06/2026

**Furnishing:** Unfurnished

A fantastic four-bedroom detached bungalow available to rent in Fetcham, situated in a sought-after location. This well-presented home offers four good sized bedrooms, a modern family bathroom, a separate contemporary kitchen, and a spacious living room with French doors opening onto a large private rear garden.

The property further benefits from a generous frontage, a peaceful setting and a driveway, making it ideal for families or professionals.

Located in a quiet and highly desirable area, the property is within close proximity to several well-regarded schools, including Eastwick Infant School, Fetcham Village Infant School, The Howard of Effingham School, and Therfield School. Bookham railway station is within easy walking distance, while Bookham High Street is just a short distance away, offering a variety of shops, cafés, and everyday amenities.



**Deposit:** £3,346

**Date First Available:** 01/06/2026

**Furnishing:** Unfurnished

A fantastic four-bedroom detached bungalow available to rent in Fetcham, situated in a sought-after location. This well-presented home offers four good sized bedrooms, a modern family bathroom, a separate contemporary kitchen, and a spacious living room with French doors opening onto a large private rear garden.

The property further benefits from a generous frontage, a peaceful setting and a driveway, making it ideal for families or professionals.

Located in a quiet and highly desirable area, the property is within close proximity to several well-regarded schools, including Eastwick Infant School, Fetcham Village Infant School, The Howard of Effingham School, and Therfield School. Bookham railway station is within easy walking distance, while Bookham High Street is just a short distance away, offering a variety of shops, cafés, and everyday amenities.

## The Copse, Fetcham, Surrey, KT22 9TG

Approximate Gross Internal Area = 73.4 sq m / 790 sq ft

Outbuildings = 26.9 sq m / 289 sq ft

Total = 100.3 sq m / 1079 sq ft

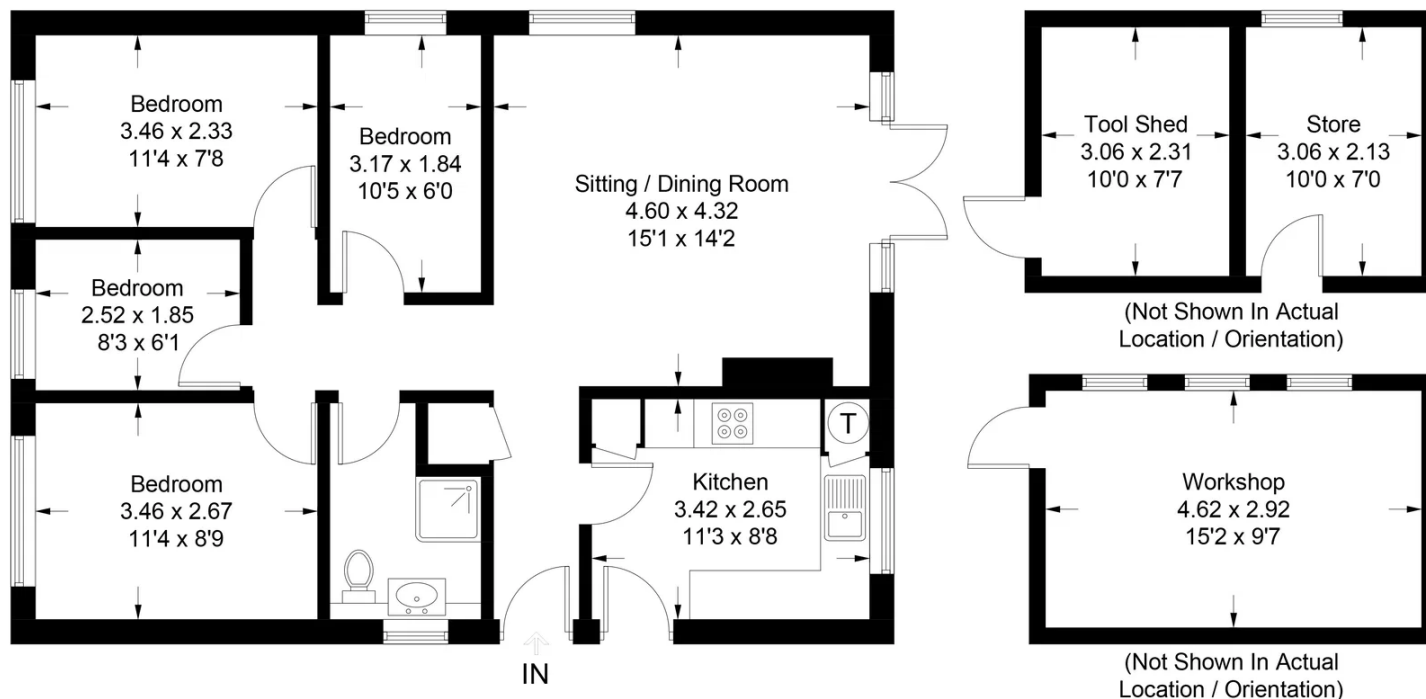


Illustration for identification purposes only, measurements are approximate, not to scale. Fourlabs.co © (ID1299628)

