

# 185 Eldo Road - Offers Over £240,000

West Row Bury St. Edmunds IP28 8PY



*"Consistently providing outstanding service to our clients"*



# Offers Over £240,000

## The Property

A charming three-bedroom semi-detached flint cottage, ideally positioned in the highly sought-after village of West Row. This delightful home offers generous and well-proportioned accommodation, including a spacious living/dining room perfect for both relaxing and entertaining, a modern fitted kitchen, and three comfortable bedrooms. Externally, the property benefits from a private garden providing a peaceful outdoor retreat, along with convenient off-road parking. An ideal opportunity for first-time buyers, growing families, or those seeking an attractive rental investment in a popular village location.

## Features

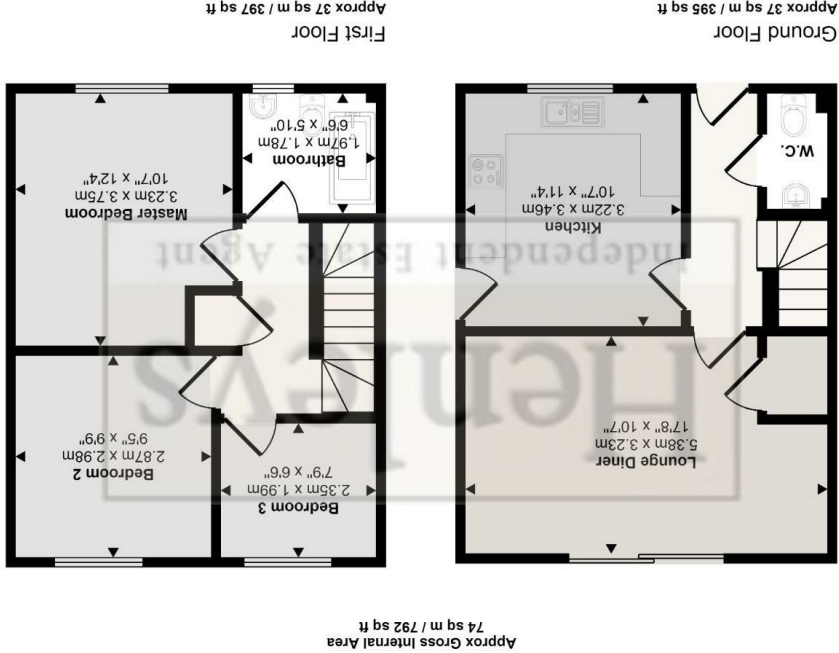
- FLINT STYLE COTTAGE
- SPACIOUS LIVING ROOM
- OFF ROAD PARKING
- SEMI DETACHED
- DOWNSTAIRS WC
- OIL FIRED HEATING
- THREE BEDROOMS
- PRIVATE GARDEN
- IDEAL FOR FIRST TIME BUYERS OR A FAMILY HOME
- CALL SHIRES TO VIEW



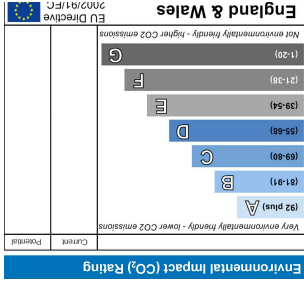
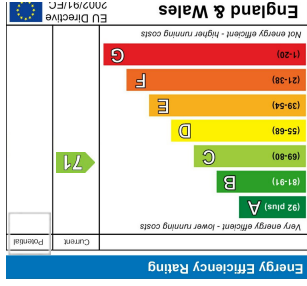


These sales particulars have been produced as a general guide only and we would draw to your attention that we have not carried out a detailed Survey of the property nor have we tested services, appliances or specific fittings. Whilst measurements and statements given within the details are provided in good faith, their accuracy should not be relied upon. If there are any points about which you may be uncertain or would like further clarification, we would suggest that you telephone this office and speak to our staff who will endeavour to assist you.





This floorplan is only for illustrative purposes and is not to scale. Measurements of rooms, doors, windows, and any items are approximate and no responsibility is taken for any error, omission or mis-statement. Icons of items such as bathroom suites are representations only and may not look like the real items. Made with Made Snappy 360.



Shires Residential  
4 New Street, Mildenhall, Suffolk, IP28 7EN  
T: 01638 712132  
E: mildenhall@shiresestateagents.co.uk  
www.shiresresidential.com