

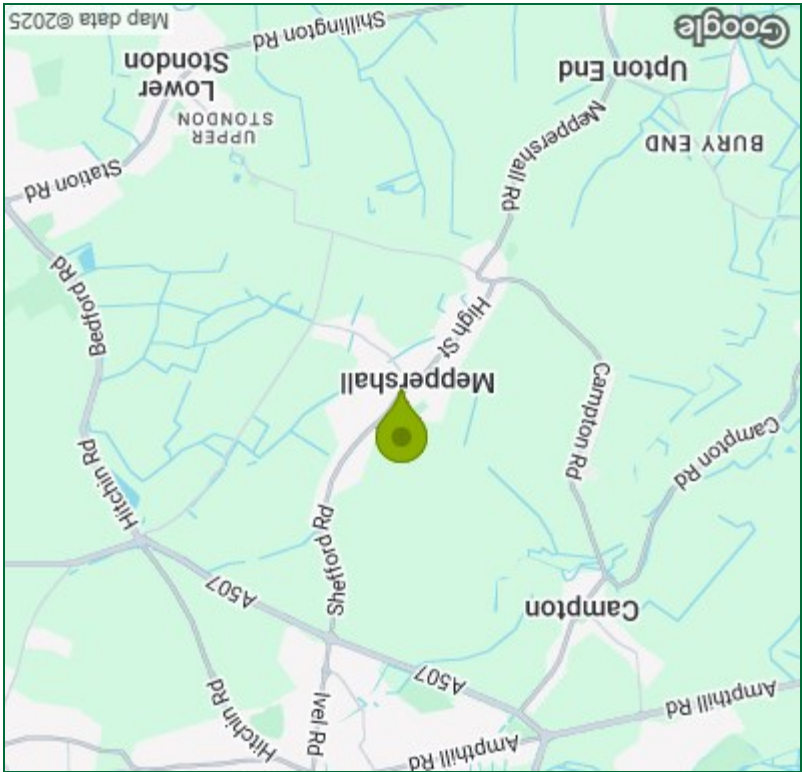
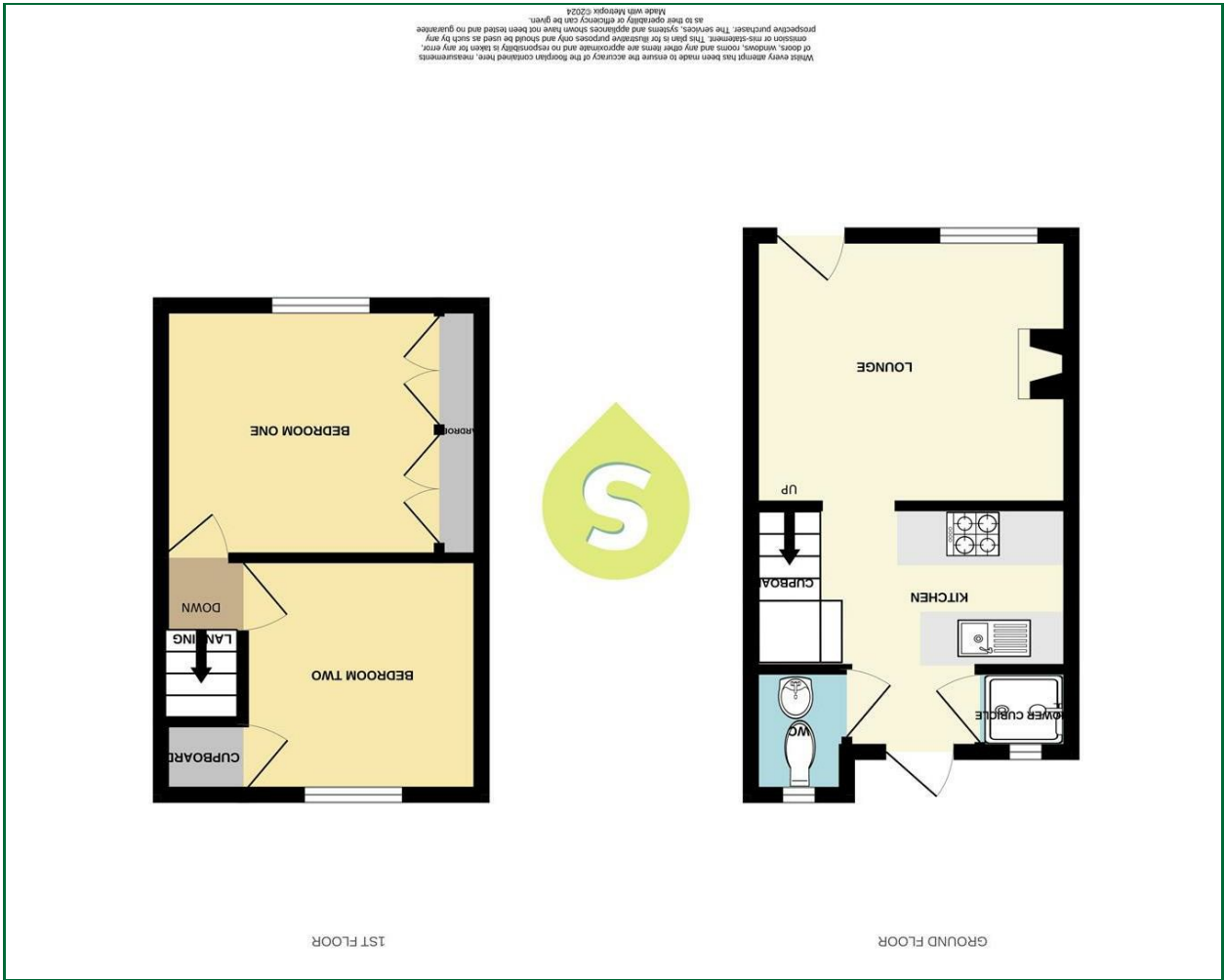


22 High Street, Bedford, Bedfordshire, SG17 5DG  
Tel: 01462 814087 Email: [enquiries@sheridans-estates.com](mailto:enquiries@sheridans-estates.com) <https://www.sheridans-estates.com>

These particulars, whilst believed to be accurate are set out as a general outline only for guidance and do not constitute any part of an offer or contract. Intending purchasers should not rely on them as statements of representation of fact, but must satisfy themselves by inspection or otherwise as to their accuracy. No person in this firm's employment has the authority to make or give any representation or warranty in respect of the property.

Please contact our Bedford Office on 01462 814087 if you wish to arrange a viewing appointment for this property or require further information.

Viewing

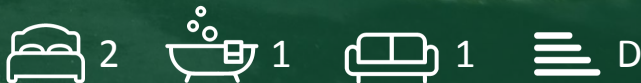


Area Map

Floor Plan



High Street,  
Meppershall | Bedfordshire  
£230,000





Lounge  
11'6" x 10'1"  
Entrance door, window to front, radiator.

Kitchen  
11'6" x 6'2"  
Fitted kitchen with a range of base and eye level units with roll top work surfaces, stainless steel sink unit with mixer tap, plumbing for washing machine, integrated oven and hob, tiled splash back.

Rear Lobby  
5'1" x 2'10"  
Door to rear, doors to shower and separate w.c.

Shower Cubicle  
Window to rear, fully tiled walls, wall mounted shower, extractor fan.

Cloakroom  
Suite comprising of low level w.c, wash hand basin, part tiled walls, radiator.

Landing  
Access to both bedrooms.

Bedroom One  
11'8" x 9'1"  
Window to front, radiator, fitted wardrobes.

Bedroom Two  
8'4" x 7'3"  
Window to front, radiator, cupboard housing wall mounted gas boiler.

Rear Garden  
Small courtyard garden laid to paving. Shared pedestrian access across rear of garden.

Agents Notes



Freehold.  
Council Tax band B.  
Mains drainage. Mains Water, gas and electric.

