





10 Warren Place,  
£120,000

2 1 1



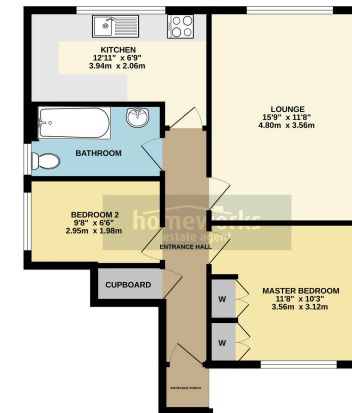


- **\*\* NO ONWARD CHAIN \*\***
- **TWO BEDROOMS**
- **12'11 KITCHEN**
- **ENCLOSED REAR GARDEN**
- **\*\* CALL TODAY TO  
ARRANGE YOUR VIEWING \*\***
- **GROUND FLOOR FLAT WITH  
GARDEN**
- **15'11 LOUNGE**
- **11'8 MASTER BEDROOM**
- **ALLOCATED PARKING  
SPACE**



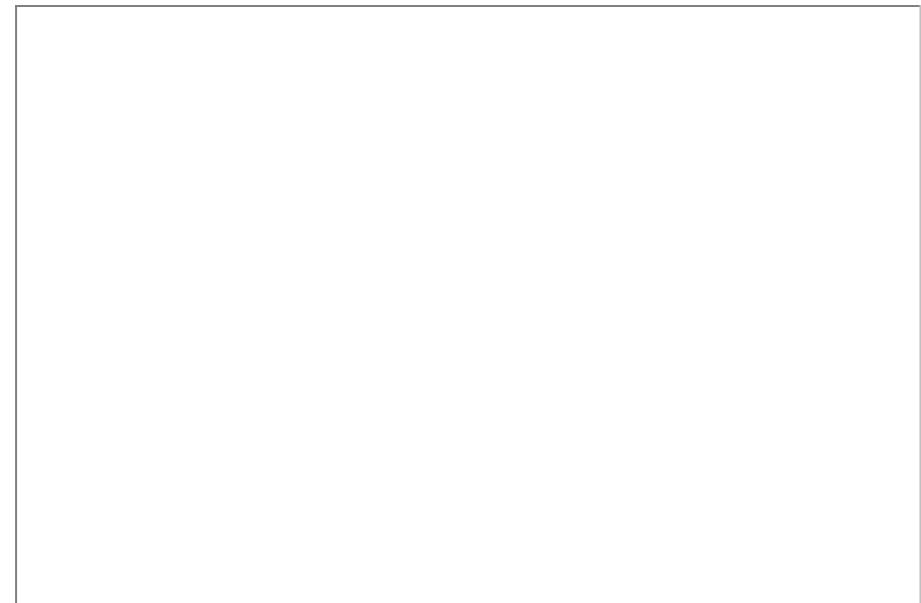


GROUND FLOOR



While every effort has been made to ensure the accuracy of the floorplan, the seller does not warrant its accuracy. It is for information only and should not be relied upon for any purpose. The seller does not warrant its accuracy. It is for information only and should not be relied upon for any purpose. The seller does not warrant its accuracy. It is for information only and should not be relied upon for any purpose.

**NO ONWARD CHAIN | GROUND FLOOR FLAT WITH GARDEN |  
TWO BEDROOMS | 15'11 LOUNGE | 12'11 KITCHEN | 11'8  
MASTER BEDROOM | ENCLOSED REAR GARDEN | ALLOCATED  
PARKING SPACE | \*\* CALL TODAY TO ARRANGE YOUR VIEWING  
\*\***



C AMOS MNAEA Managing Director  
VAT no. 185 328 683

**ZOOPLA**

**rightmove**