

for sale

£170,000



Norwich Court Burchs Close Taunton TA1 4TR

An **EXCITING OPPORTUNITY** to acquire this **TWO BEDROOM TOP-FLOOR PURPOSE-BUILT APARTMENT**, situated in the sought-after area of **GALMINGTON**. The property benefits from a **GARAGE**, **GAS CENTRAL HEATING** and **NO ONWARD CHAIN**, while being conveniently positioned close to Taunton **TOWN CENTRE**, **LOCAL AMENITIES**.

Residential Sales & Lettings | Mortgage Services |
Conveyancing | Surveyors | Land & New Homes



Norwich Court Burchs Close Taunton TA1 4TR

Front Door

Leading to...

Entrance Hall

Welcoming entrance hall with useful storage cupboards and doors leading to lounge and bathroom

Lounge/Dining Room

A bright and spacious reception room providing ample space for both sitting and dining areas. Large windows and a door opening onto the private balcony providing a relaxing area to enjoy the views and open green space.

Kitchen

Fitted with a range of wall and base units with work surfaces over, inset sink and drainer, space for appliances and window looking out over open green space and providing lots of natural light

Bedroom 1

A generous double bedroom featuring built-in wardrobe storage, and large window letting in lots of light overlooking pleasant open green space.



Bedroom 2

A well-proportioned second bedroom, with built in wardrobe and door leading onto second balcony providing lots of natural light.

Bathroom

Comprising a white bath with shower over, wash hand basin with under sink storage and WC, finished with white tiles for a clean and practical style.

Private Balcony

A valuable outdoor space accessed directly from the lounge, providing room for seating and enjoying the open green surroundings.

Parking

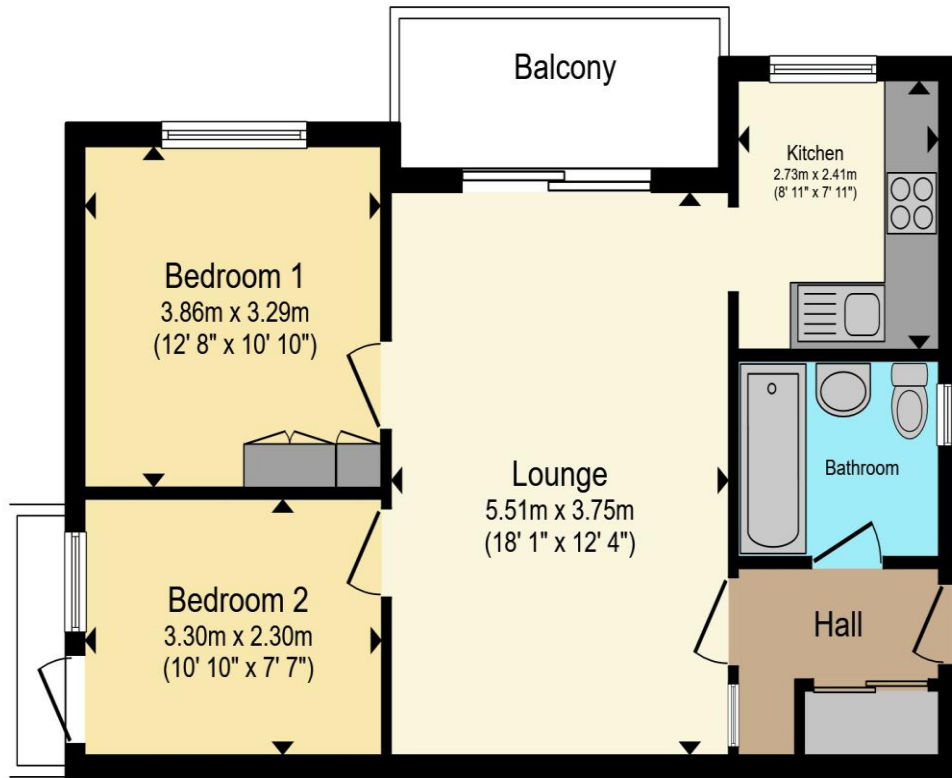
The property benefits from a garage located within a nearby block of garages, providing useful parking or additional storage space.

Lettings

For any advice on this property or any other investment opportunities, please contact our experienced lettings team, who aim to get the best tenants at the best price.

Our comprehensive and competitive management and lettings services can be tailored to fit your needs.





Total floor area 51.5 m² (554 sq.ft.) approx

This floor plan is for illustrative purposes only. It is not drawn to scale. Any measurements, floor areas (including any total floor area), openings and orientation are approximate. No details are guaranteed, they cannot be relied upon for any purpose and they do not form part of any agreement. No liability is taken for any error, omission or misstatement. A party must rely upon its own inspection(s). Powered by www.propertybox.io



To view this property please contact Connells on

T 01823 334 433
E taunton@connells.co.uk

53 High Street
 TAUNTON TA1 3PR

Property Ref: TTN313703 - 0005

Tenure: Leasehold EPC Rating: D

Council Tax Band: B Service Charge: Ask Agent

Ground Rent: Ask Agent

view this property online
connells.co.uk/Property/TTN313703

This is a Leasehold property. We are awaiting further details about the Term of the lease. For further information please contact the branch. Please note additional fees could be incurred for items such as Leasehold packs.



1. MONEY LAUNDERING REGULATIONS Intending purchasers will be asked to produce identification documentation at a later stage and we would ask for your co-operation in order that there will be no delay in agreeing the sale. 2. These particulars do not constitute part or all of an offer or contract. 3. The measurements indicated are supplied for guidance only and as such must be considered incorrect. Potential buyers are advised to recheck measurements before committing to any expense. 4. We have not tested any apparatus, equipment, fixtures, fittings or services and it is in the buyers interest to check the working condition of any appliances.

Connells Residential is registered in England and Wales under company number 1489613, Registered Office is Cumbria House, 16-20 Hockliffe Street, Leighton Buzzard, Bedfordshire, LU7 1GN. VAT Registration Number is 500 2481 05.

see all our properties at www.connells.co.uk | www.rightmove.co.uk | www.zoopla.co.uk