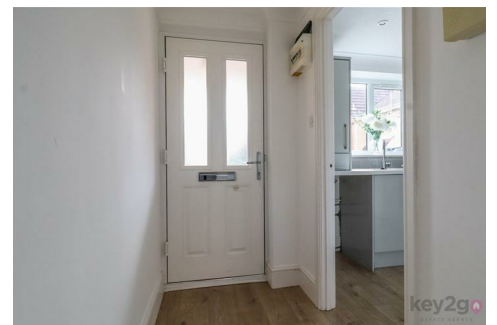
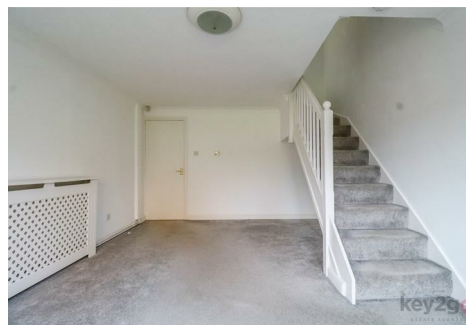




Marketing Preview



53 Hall Meadow Drive, Halfway, Sheffield, S20 4XE

£180,000

Bedrooms 2, Bathrooms 1, Reception Rooms 1



NO CHAIN! An ideal first-time buyer home, this modern throughout property is beautifully presented throughout and ready to move straight into. Benefiting from a stylish kitchen, enclosed rear garden, and allocated parking, it is situated on a sought-after estate close to local amenities and excellent transport links.

SUMMARY

NO CHAIN! An ideal first-time buyer home, this modern throughout property is beautifully presented throughout and ready to move straight into. Benefiting from a stylish kitchen, enclosed rear garden, and allocated parking, it is situated on a sought-after estate close to local amenities and excellent transport links.

A useful entrance hallway provides access to the modern kitchen, which is fitted with stunning high-gloss units, a window to the front, and a cupboard housing the boiler. To the rear of the property is the lounge, which benefits from stairs rising to the first floor and a uPVC door opening onto the rear garden.

Stairs rise to the first-floor landing, which provides access to a large double bedroom overlooking the rear, a single bedroom to the front, and the bathroom. The bathroom also benefits from a useful storage cupboard.

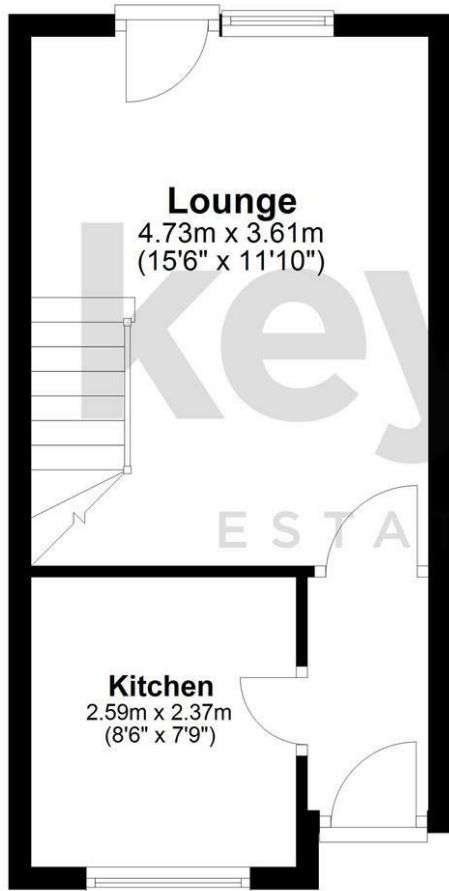
To the rear of the property is a low-maintenance enclosed garden featuring a patio area, lawn, and fencing to the boundaries. A gate provides access to the communal car park, where the property benefits from an allocated parking space.

PROPERTY DETAILS

- FREEHOLD
- FULLY UPVC DOUBLE GLAZED
- GAS CENTRAL HEATING
- COMBI BOILER - 2 YEARS OLD
- COUNCIL TAX BAND A - SHEFFIELD CITY COUNCIL

FOR ROOM MEASUREMENTS PLEASE SEE THE FLOORPLAN

Ground Floor



First Floor



| Energy Efficiency Rating | | |
|--|----------------------------|-----------|
| | Current | Potential |
| <i>Very energy efficient - lower running costs</i> | | |
| (92 plus) A | | |
| (81-91) B | | |
| (69-80) C | | |
| (55-68) D | | |
| (39-54) E | | |
| (21-38) F | | |
| (1-20) G | | |
| <i>Not energy efficient - higher running costs</i> | | |
| England & Wales | EU Directive 2002/91/EC | |

