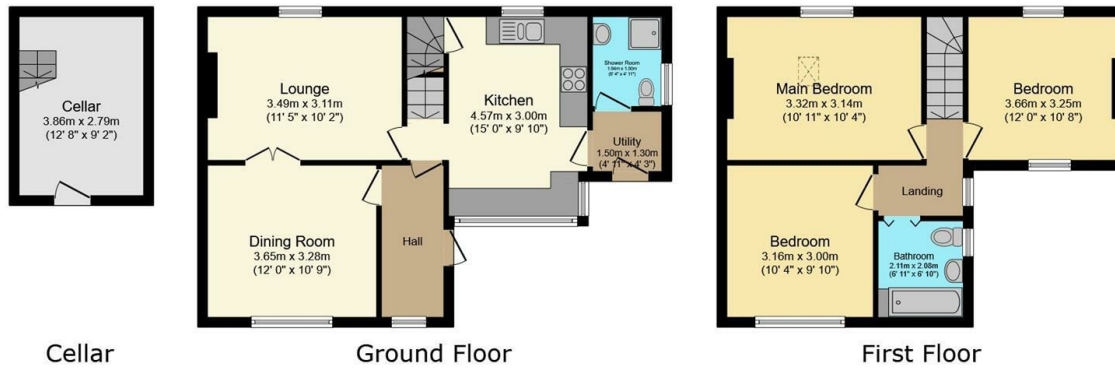




41 Matlock Road, Sheffield, S6 3RQ

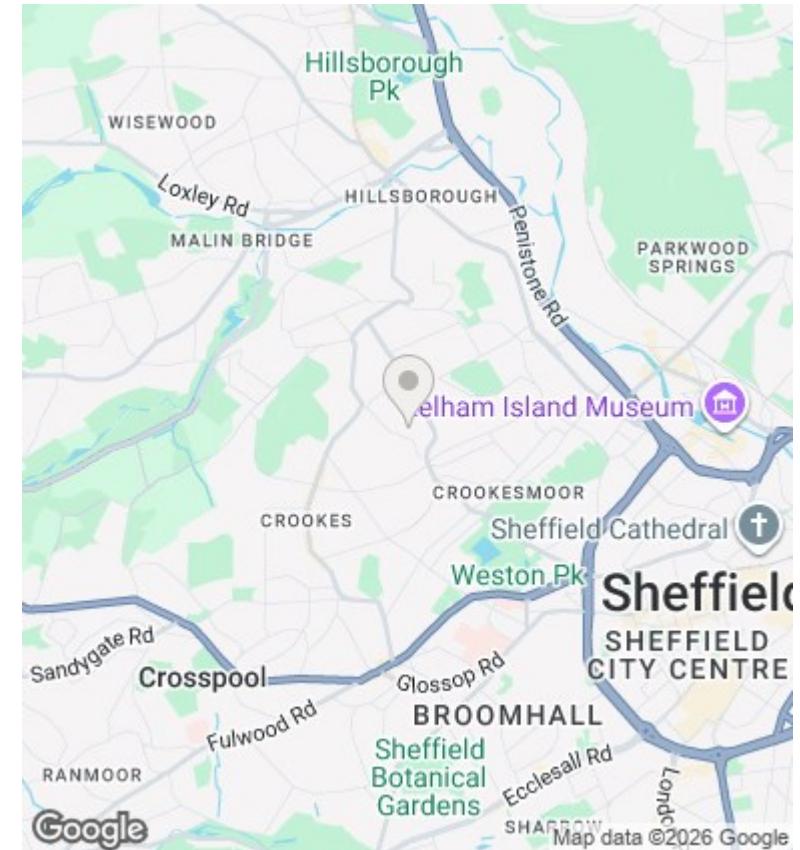
Offers Over £250,000

- Unique end-terrace
- Three double bedrooms
- Great storage space in the cellar
- Large kitchen
- Two bathrooms
- Walking distance to the University of Sheffield, city centre and central hospitals
- Two reception rooms
- Enclosed rear garden
- Freehold



Total floor area: 105.3 sq.m. (1,134 sq.ft.)

This floor plan is for illustrative purposes only. It is not drawn to scale. Any measurements, floor areas (including any total floor area), openings and orientations are approximate. No details are guaranteed, they cannot be relied upon for any purpose and do not form any part of any agreement. No liability is taken for any error, omission or misstatement. A party must rely upon its own inspection(s). Powered by www.Propertybox.io



Directions

Viewings

Viewings by arrangement only. Call 01142 687777 to make an appointment.

Council Tax Band

EPC Rating:

Energy Efficiency Rating		
	Current	Potential
<i>Very energy efficient - lower running costs</i>		
(92 plus) A		
(81-91) B		
(69-80) C		
(55-68) D		
(39-54) E		
(21-38) F		
(1-20) G		
<i>Not energy efficient - higher running costs</i>		
England & Wales	EU Directive 2002/91/EC	