



Granville Gardens, W5

£515,000

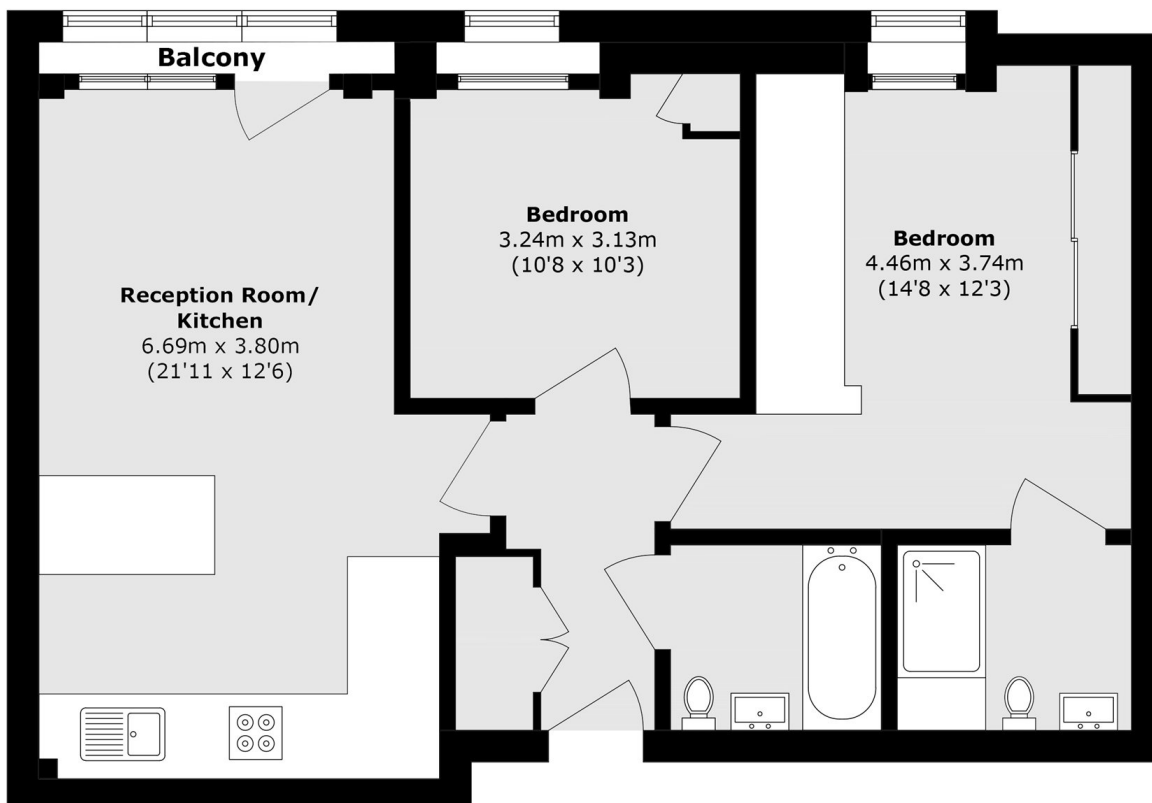
Offered with no onward chain, this well-presented two-bedroom, two-bathroom apartment is in excellent condition throughout. The property benefits from a long lease and an allocated parking space within a secure gated development.

Ideally located just moments from Ealing Common Station (District and Piccadilly lines), the property is perfectly positioned to enjoy a wide range of local shops, restaurants, cafés and amenities. The open green spaces of Ealing Common are also nearby.

Features

- Two Bedrooms
- Two Bathrooms
- Allocated Gated Parking
- Long Lease
- Purpose Built Block
- No Onward Chain

Granville Gardens, London, W5



Total area (approx.): 66.6 sq. m (716.8 sq. ft)

Balcony area (approx.): 0.6 sq. m (6.4 sq. ft)