



Carmalt Gardens, SW15

£550,000

Dexters



Carmalt Gardens, SW15

A beautifully presented two bedroom period conversion set within an attractive red brick building on the sought-after Carmalt Gardens.

This bright and well-proportioned flat offers 512 sq ft of thoughtfully arranged accommodation, including a spacious kitchen/reception room with large sash windows, high ceilings and attractive wood flooring. The contemporary kitchen is neatly arranged to one side, creating an ideal space for both entertaining and everyday living. There are two bedrooms, including a generous principal bedroom with fitted storage, and a modern bathroom positioned off the central hallway.

The property retains charming period features externally, with striking bay windows and ornate detailing, while internally offering a stylish, turnkey finish throughout.

Carmalt Gardens is a quiet residential street ideally located for the green open spaces of Putney Heath and Richmond Park, as well as the shops, cafés and amenities of Putney High Street. Excellent transport links are close by, including Putney Mainline Station and East Putney Underground Station.

Features

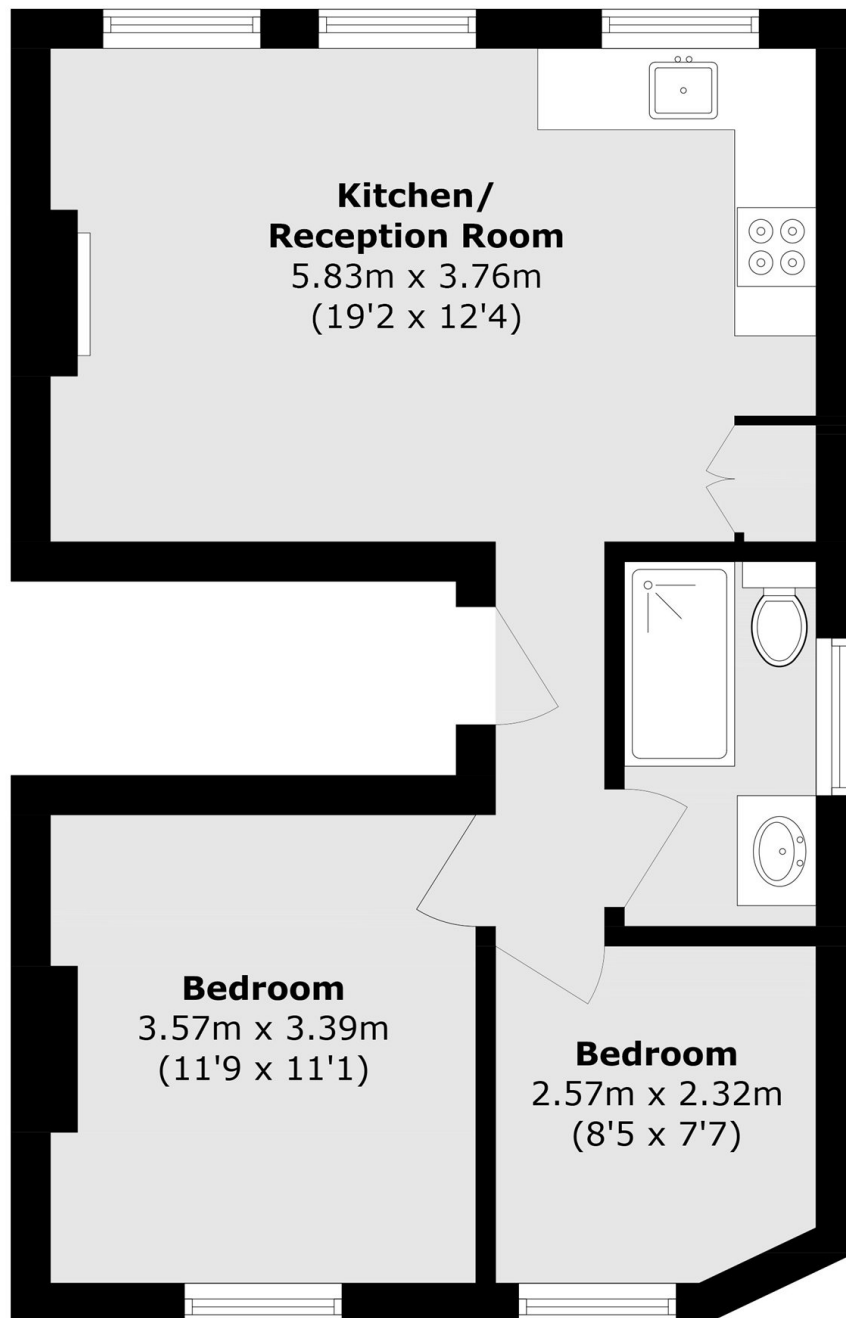
- Two Bedrooms
- One Bathroom
- Share of Freehold
- Period Conversion
- Chain free
- Central Location







Carmalt Gardens, London, SW15



Total area (approx.): 49.4 sq. m (531.7 sq. ft)