



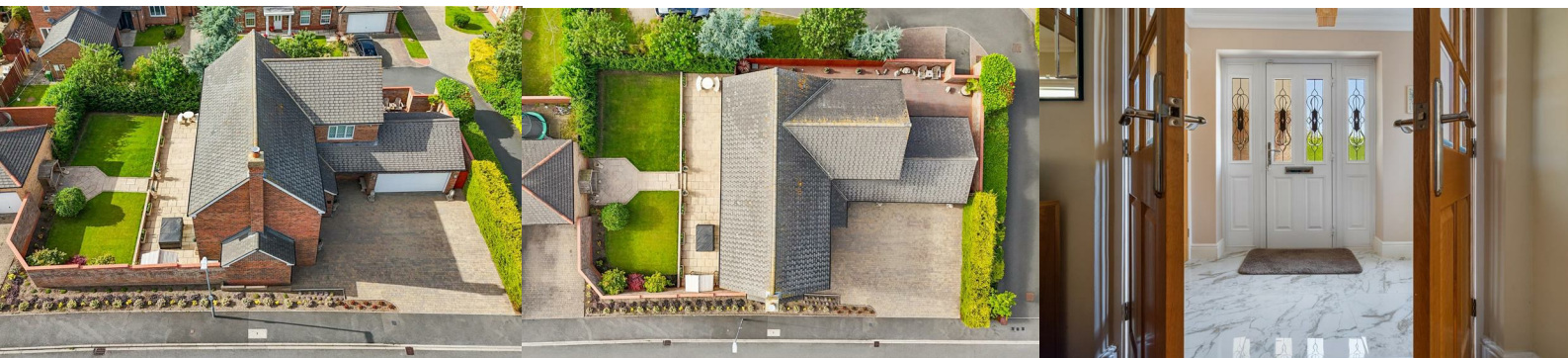
22 Snowdrop Road

, Hartlepool, TS26 0WG

£470,000



Igomove take enormous pride in presenting to the market this capacious five bedroom detached property located in the popular area of Bishop Cuthbert, the stunning abode offers a wealth of desirable attributes which include; five large bedrooms (master and second bedroom with ensuite facilities), pristine family bathroom, impressive lounge, separate dining room, additional sitting room, contemporary dining kitchen, study, utility room, guest cloakroom, extensive driveway, rear South West facing garden, double garage, uPVC double, gas central heating, stylish decor throughout, beautiful flooring, no onward chain, freehold.



Attractive modern facade, extensive block paved driveway for several vehicles to double garage with electric door, porch entry with fitted storage cupboard into;

Capacious entrance hallway with wooden stairs to the first floor accommodation, solid wood flooring, impeccable decor, decorative coving.

Spacious lounge entered by double doors from the hallway and with windows to the front elevation, side elevation window and with French doors to the side, solid wood flooring, brick inglenook fireplace with contemporary electric fire, immaculate decor, decorative coving.

Guest cloakroom comprising close coupled WC and pedestal corner wash basin with complimentary half tiled walls.

Study with window to the front elevation, laminate flooring, decorative coving, modern decor.

Separate formal dining room with side elevation window, neutral decor, decorative coving.

Stunning dining kitchen fitted with contemporary wall, larder, base, and drawer cabinetry, solid quartz surfaces, integrated microwave, integrated oven x 2, integrated steaming oven, integrated hob, integrated multifunction extractor, sink with mixer tap, integrated fridge freezer, integrated dishwasher, central breakfasting Island, tiled flooring, recessed spotlights, French doors to the rear.

Useful utility room with plumbing for washing machine and space for tumble dryer, base cabinetry, stainless sink with mixer tap, tiled backsplash, half glazed exterior access door.

Sitting room with French doors to the garden, immaculate decor, decorative coving, tiled floor.

To the first floor galleried landing, there is a fitted storage cupboard and side elevation window bringing in natural light.

Master double bedroom with twin windows to the front of the property and wall to wall contemporary fitted wardrobes, immaculate decorative order, also with access to;

Ensuite room comprising bath, shower enclosure, WC and his and her vanity washbasins with complementary tiling, chrome heated towel radiator, recessed spotlights.

Bedroom two is a large double situated to the rear with twin windows to the side elevation, modern wall to wall fitted wardrobes, excellent decor and also benefiting from;

Ensuite shower room which comprises shower enclosure, close coupled WC and pedestal wash basin with complementary tiling.

Bedroom three is a spacious double situated to the front with a side elevation window and with wall to wall fitted wardrobes, superb decor.

Bedroom four is a double which has fitted wardrobes and side elevation window, impeccable decor.

Bedroom five is further double room with side elevation window, delightful decor.

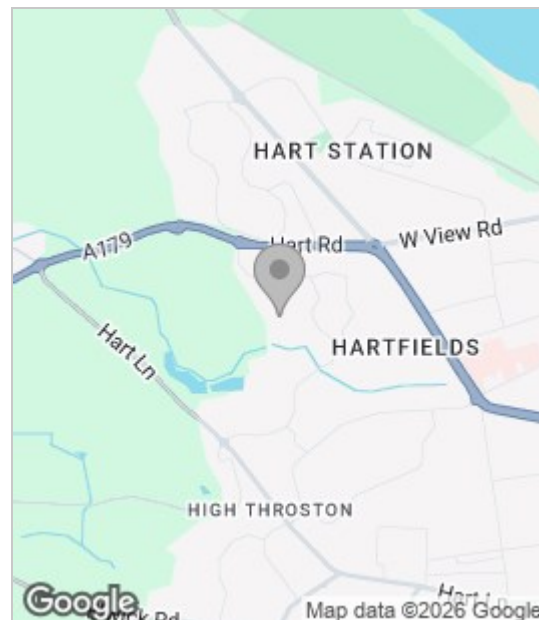
The family bathroom comprises bath, shower enclosure, concealed cistern WC and vanity wash basin with complementary tiling, heated towel radiator.

To the rear is enclosed large garden laid to lawn with extensive patio area and established shrubbery, hot and cold tap.

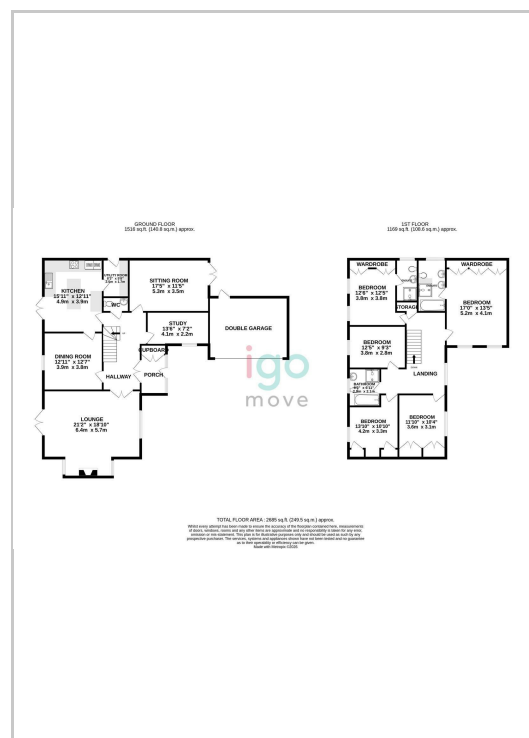
Homes of this size, in this location and presented to this high standard are rare to the market and Igomove encourage early viewing to ensure you secure this fabulous property.

These particulars, whilst believed to be accurate are set out as a general outline only for guidance and do not constitute any part of an offer or contract. Intending purchasers should not rely on them as statements of representation of fact, but must satisfy themselves by inspection or otherwise as to their accuracy. No person in this firm's employment has the authority to make or give any representation or warranty in respect of the property.

Area Map



Floor Plan



Energy Efficiency Graph

