

Bowman Mews, SW18

£2,250 Per calendar month

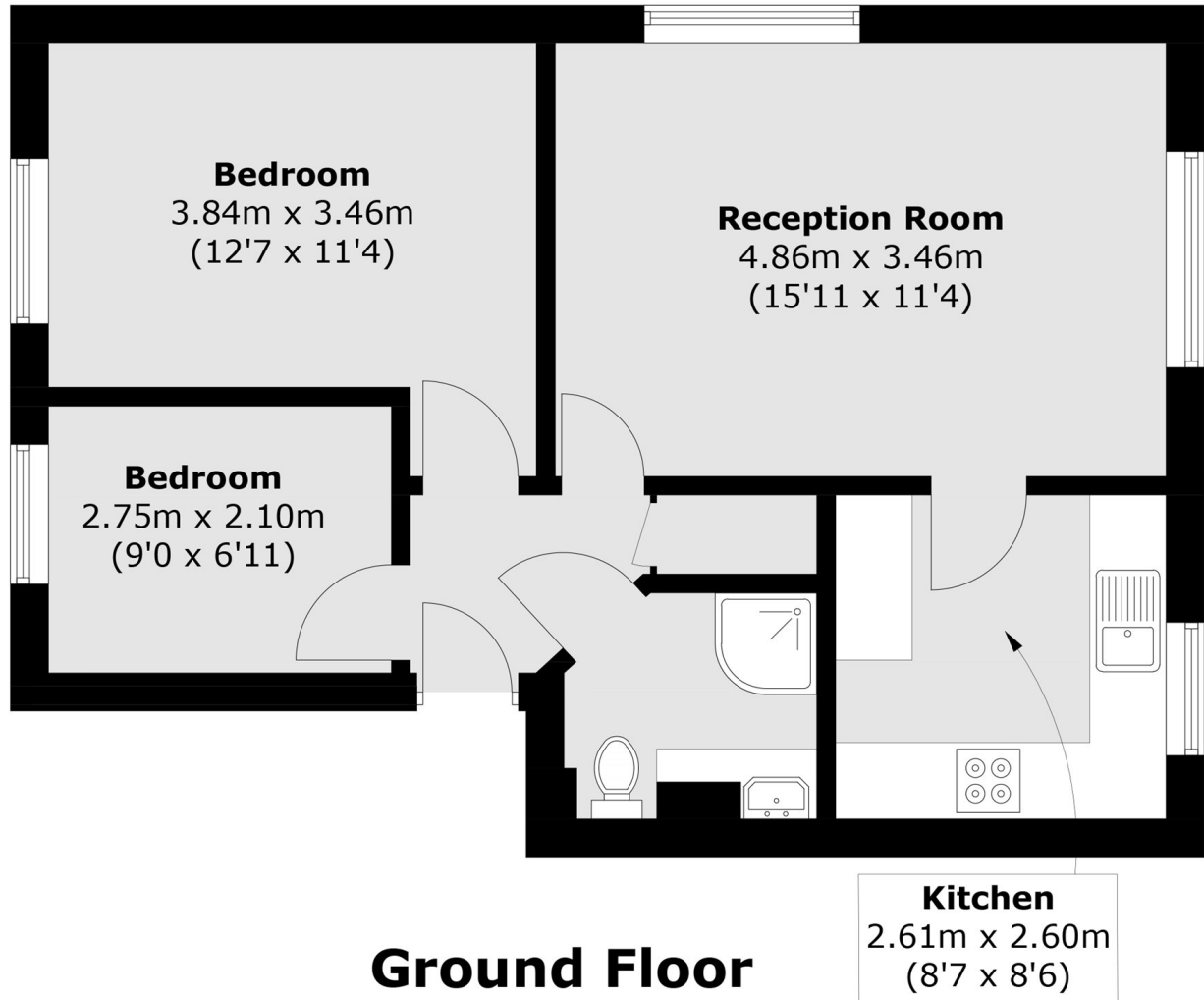
A lateral ground floor, two bedroom apartment. The property presents a separate kitchen and open plan living and dining room. It further offers an allocated parking space as well as access to communal gardens.

Bowman Mews is positioned 0.3m from Southfields Station and sits on the doorstep of all the boutique amenities Southfields high street has to offer. The property is also in the catchment area of Sheringdale Primary.

Features

- Two Bedrooms
- Allocated Parking
- Communal Gardens
- Furnished
- Wandsworth Council Tax
- Ground Floor

Bowman Mews,
London, SW18



Total area (approx.): 49.2 sq. m (529.6 sq. ft)