



38 Newitt Road, Bicton Heath, Shrewsbury, SY3 5FJ

3 bedroom semi-detached house — £390,000 Freehold

38 Newitt Road, Bicton Heath, Shrewsbury, SY3 5FJ

Coopergreenpooks.co.uk

£390,000 Freehold — 3 bedroom semi-detached house

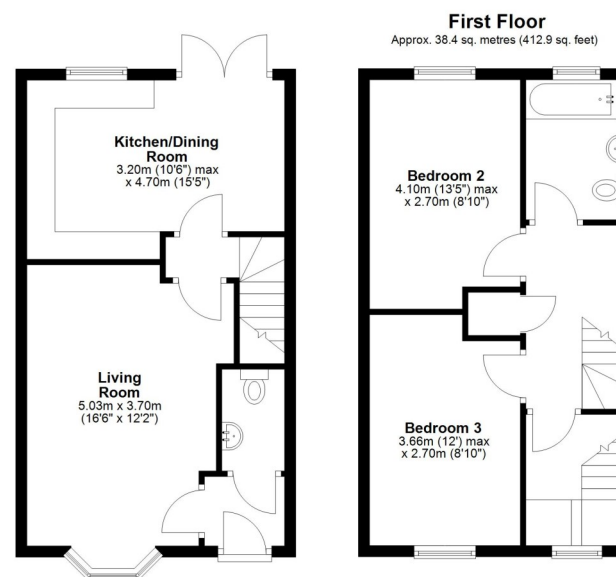
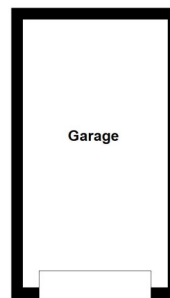
sales@cgpooks.co.uk

Occupying a lovely position at the end of a quiet cul-de-sac, with views over green open space, this beautifully presented semi-detached house has been upgraded from standard to provide thoughtfully designed accommodation, finished to a high standard throughout, while benefitting from a private rear garden, detached single garage, and driveway parking for three cars.

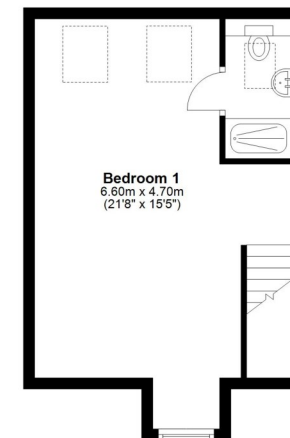
KEY FEATURES

- Entrance hall with access to both the living room and cloakroom
- Good-sized living room with feature bay window to front and useful under stairs storage
- Impressive open plan kitchen/dining room, complete with integrated appliances and glazed double doors onto the garden
- On the first floor are two double bedrooms and a well-appointed family bathroom with shower
- The main bedroom is accessed via a private inner hallway, with turning staircase to the second floor. This bedroom has been very well-designed, having velux roof lights to the rear, window with views to front, and an en-suite shower room
- uPVC double glazed windows and gas fired central heating
- Private rear garden, extending behind the garage, with a paved sun terrace and secure gate to side
- Driveway parking for three cars, and access to the detached single garage
- Quietly situated within a popular modern development, still covered by the new build warranty, upgraded and improved from standard
- Located a few minutes' walk from the Bicton Heath shopping complex, Oxon Primary school and a very good pub/restaurant. The bypass is just a few minutes' drive from the property, and the town centre is under 10 minutes

Ground Floor
Approx. 51.0 sq. metres (548.6 sq. feet)



Second Floor
Approx. 30.7 sq. metres (330.0 sq. feet)



Total area: approx. 120.0 sq. metres (1291.5 sq. feet)









38 Newitt Road, Bicton Heath, Shrewsbury, SY3 5FJ

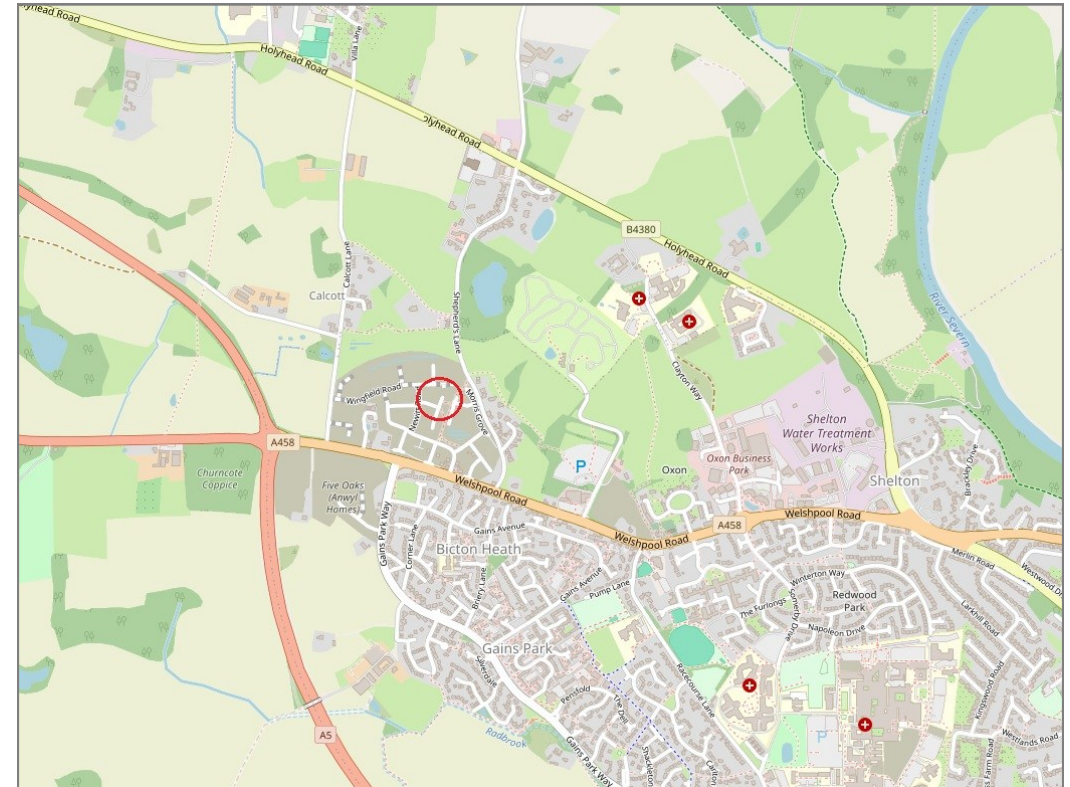
£390,000 Freehold — 3 bedroom semi-detached house

sales@cgpooks.co.uk

rightmove 

onTheMarket.com 

 **RICS**
Regulated by RICS



BOUNDARIES NOT CONFIRMED

Tenure	Freehold
Local Authority	Shropshire Council
Council Tax	Band C
EPC Band	Band B
Services	All mains services are connected

 **Expert mortgage advice available**

3 Barker St, Shrewsbury SY1 1QF

Cooper Green Pooks
01743 276666



Your home may be repossessed if you do not keep up repayments on your mortgage.

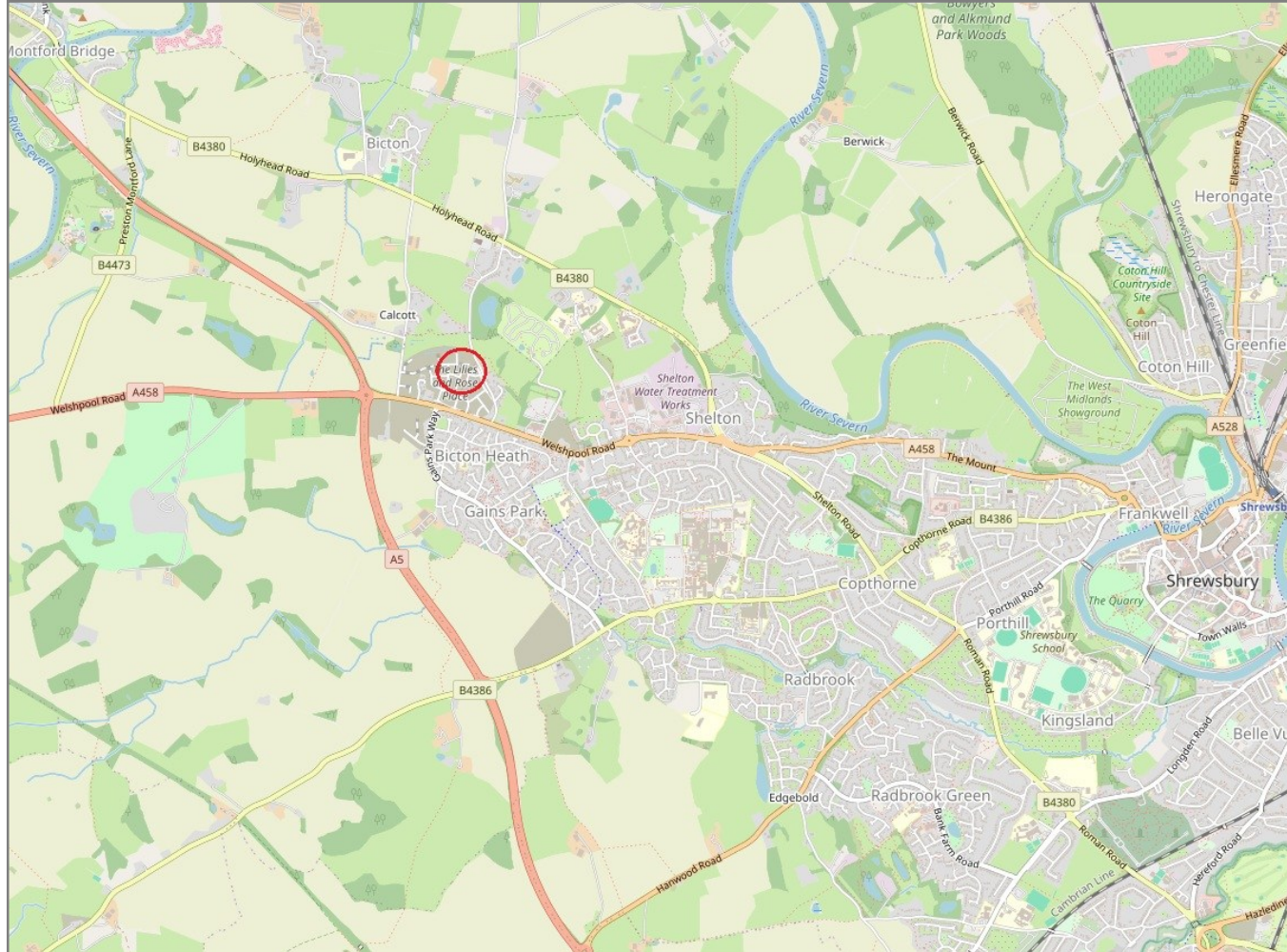
There may be a fee for mortgage advice. The actual amount you pay will depend upon your circumstances. The fee is up to 1% but a typical fee is 0.3% of the amount borrowed.

38 Newitt Road, Bicton Heath, Shrewsbury, SY3 5FJ

Coopergreenpooks.co.uk

£390,000 Freehold — 3 bedroom semi-detached house

sales@cgpooks.co.uk



IMPORTANT NOTICE: Cooper Green Pooks for themselves and for the lessors or vendors of this property whose agents they are give notice that: 1 No appliances, services or service installations have been tested and no warranty as to suitability or serviceability is implied. Any prospective purchaser or lessee is advised to obtain verification from their surveyor or solicitor. 2. The particulars are set out as a general outline only for the guidance of the intended purchasers or lessees and do not constitute, nor constitute part of, an offer or contract. 3. All descriptions, reference to condition and necessary permissions for use and occupation and other details are given in good faith and are believed to be correct but any intending purchasers or lessees should not rely on them as statements or representation of fact but satisfy themselves by inspection or otherwise as to the correctness of each of them. 4. No person in the employment of Cooper Green Pooks has any authority to make or give any representation or warranty whatsoever in relation to this property. 5. All rentals and prices are quoted exclusive of Stamp Duty, legal and surveyors fees and any other associated purchasers or lessees costs. 6. Floor plans are indicative only and should not be relied on. 7. The plan showing the boundary of the property is indicative only and has not been checked against the legal title so should not be relied on. 8. All dimensions, floor areas and site areas are only approximate and should not be relied on. Dimensions are generally maximum room dimension.