



ABBOTSWOOD ROAD, SW16

£2,200,000

- Five bedrooms
- Three bathrooms
- Off-street parking
- Landscaped garden
- Garden studio
- Energy rating: C





ABOUT THE HOME

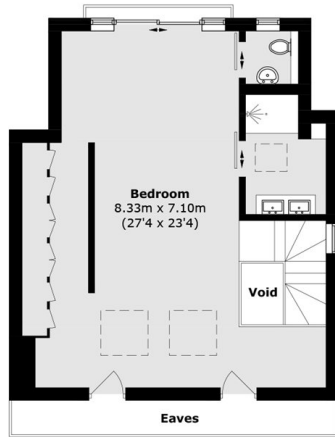
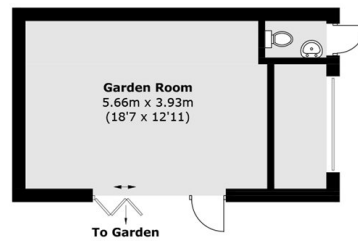
A large, semi detached, fully extended, hi-spec family home set on one of the most highly regarded roads in the area. Abbotswood Road is a stone's throw from the open spaces of Tooting Bec Common to the West and a short stroll to Balham with its array of boutiques, cafés, restaurants.

Balham, Streatham Hill and Streatham stations are all within easy reach providing access to the Northern Line and frequent trains that run directly to London Victoria, The City and central London.

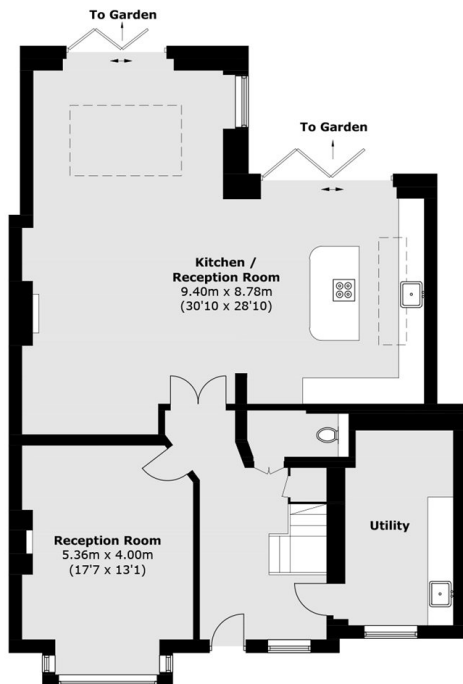
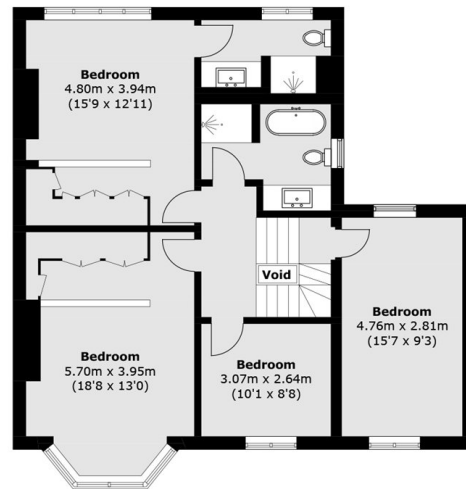
Excellent educational facilities include two outstanding primary schools, a secondary school with outstanding sixth-form provision and a number of excellent private schools including Streatham & Clapham High School for Girls, within walking distance while James Allen Girls, Dulwich College, Alleyns and Emmanuel within a 15 minute drive.






Second Floor


(Not Shown In Actual Location / Orientation)


Ground Floor

First Floor

Total area (approx.): 259.3 sq. m (2,791.0 sq. ft)
 Outbuliding area : 27.8 sq. m (299.2 sq. ft)
 (Excluding Void & Eaves)

JACKSONS STREATHAM

1-3 De Montfort Parade,
 Streatham High Road,
 Sales: 020 8487 3179
 Lettings: 020 8487 3180

Energy Rating: C We aim to make our particulars both accurate and reliable. However they are not guaranteed; nor do they form part of an offer or contract. If you require clarification on any points then please contact us, especially if you're traveling some distance to view. Please note that appliances and heating systems have not been tested and therefore no warranties can be given as to their good working order.