



7 QUEENSMEAD  
Bredon | Tewkesbury | GL20 7NF

HUGHES **HS** SEALEY

# Welcome to... 7 QUEENSMEAD

Welcome to Number 7, Queensmead, a lovely three double bedroom, extended semi-detached family home, located on this ever-popular development in this sought after village. Having been extended to both the ground and first floor; the home now enjoys a wealth of accommodation across the two floors and is further complimented by driveway parking to the front and a large, enclosed rear garden and it is because of the above, that this property comes with such a high recommendation to view.

Internally the property features a central entrance hall which allows access to the living/dining room and kitchen/breakfast room. The living room runs from the front of the house to the back and as such enjoys plenty of natural light.

The kitchen/breakfast room is a lovely size with the kitchen enjoying a wealth of fitted units which sit alongside a host of integrated appliances. Furthermore, the kitchen/breakfast room is open plan to the family

room, which is currently being used as an office space by the vendor, which of course shows off the versatility of the room.

Completing the ground floor is a side passage allowing access to the rear garden whilst also allowing access to the utility/cloakroom.

To the upstairs are three double bedrooms, all of which are a lovely size. Bedroom two further benefits from fitted wardrobes. Completing the upstairs and internal accommodation is the family shower room.

Externally, to the front elevation is driveway parking which will comfortably park three cars whilst to the rear is a sizeable garden that is predominantly laid to lawn, although to the head of the garden is a large paved terrace, ideal for alfresco dining.

## LOCATION

Bredon is a highly desirable village to live in, providing a home for people of all ages. The appeal of the

village is its wealth of local amenities within walking distance, a shop, a post office, a doctor's surgery, a village hall, a church, village infant/primary school (OFSTED 'outstanding' rating), a preschool and two public houses. For those interested in activity and other pursuits, there are a number of local clubs and societies as well as sports clubs offering bowls, football, rugby, cricket, tennis, playing fields, sailing, the river and the local marina.

The village is named after Bredon Hill, which boasts spectacular views and pathways for walking, running, cycling and horseback riding.

- A three double bedroom, semi-detached family home, located in this ever popular village
- Extended to both ground and first floor, so ensuring the home enjoys a wealth of internal space
- Driveway parking to the front – space for at least three vehicles to park

- Large, enclosed rear garden, enjoy lawns and a paved terrace to the head of the garden
- Entrance hall, living/dining room that runs front to back of the property
- Spacious kitchen/breakfast room being open plan to the family room
- Ground floor completed by the side passage and utility/cloakroom
- Three double bedrooms to the first floor plus modern three-piece shower room
- Double glazed throughout, with gas-fired central heating
- Internal viewings recommended

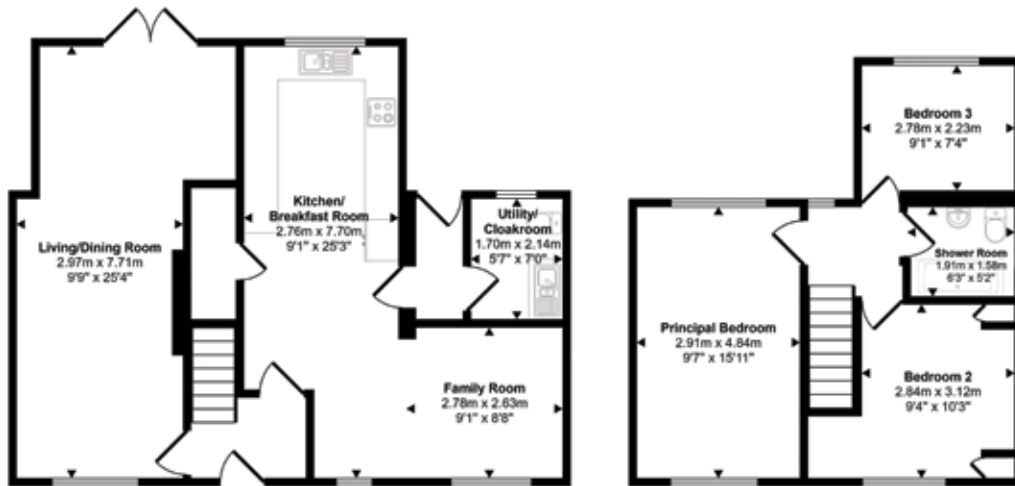
## DIRECTIONS

To locate the property, please enter the following postcode into your sat nav system: GL20 7NF. Upon arrival, the property can be identified by our For Sale sign.





Approx Gross Internal Area  
106 sq m / 1129 sq ft



This floorplan is only for illustrative purposes and is not to scale. Measurements of rooms, doors, windows, and any items are approximate and no responsibility is taken for any error, omission or mis-statement. Icons of items such as bathroom suites are representations only and may not look like the real items. Made with Made Snappy 360.



Agents notes: All measurements are approximate and for general guidance only and whilst every attempt has been made to ensure accuracy, they must not be relied on. The fixtures, fittings and appliances referred to have not been tested and therefore no guarantee can be given that they are in working order. Internal photographs are reproduced for general information and it must not be inferred that an item shown is included with the property. For a free valuation, contact 01242 220080. Copyright © Hughes Sealey. Registered in England and Wales. Company Reg No. 11126899 Registered Office: CDH Estates Ltd, Miramar, Cheltenham Road, Kinsham, Tewkesbury, GL20 8HP.



HUGHES **HS** SEALEY



HUGHES SEALEY

Email: [cheltenham@hughessealey.co.uk](mailto:cheltenham@hughessealey.co.uk)

Tel: +44 (0)1242 220080

HUGHES  SEALEY