



## Needham Terrace, NW2

Freehold - £550,000

For Sale solely via Camerons Stiff is this quaint and characterful three-bedroom terraced house, spanning 848 sq ft over two floors. The property offers an exciting opportunity to acquire a Freehold house that's only a short distance from the coveted Gladstone Park.

The Ground Floor offers a sociable and pragmatic arrangement, featuring an open-plan kitchen and living space with direct access to the 16ft rear garden. The shower room is situated at the rear of the property, maximising the size of the three bedrooms on the First Floor. It's worth noting that the house has a sizeable front garden, also.

Needham Terrace is a quiet street in Cricklewood with the varied amenities of Cricklewood Broadway and Willesden Green a short distance away. Transport via Cricklewood Station (Thameslink) provides easy access into Central London.

Early viewing is thoroughly recommended.



020 7328 2828

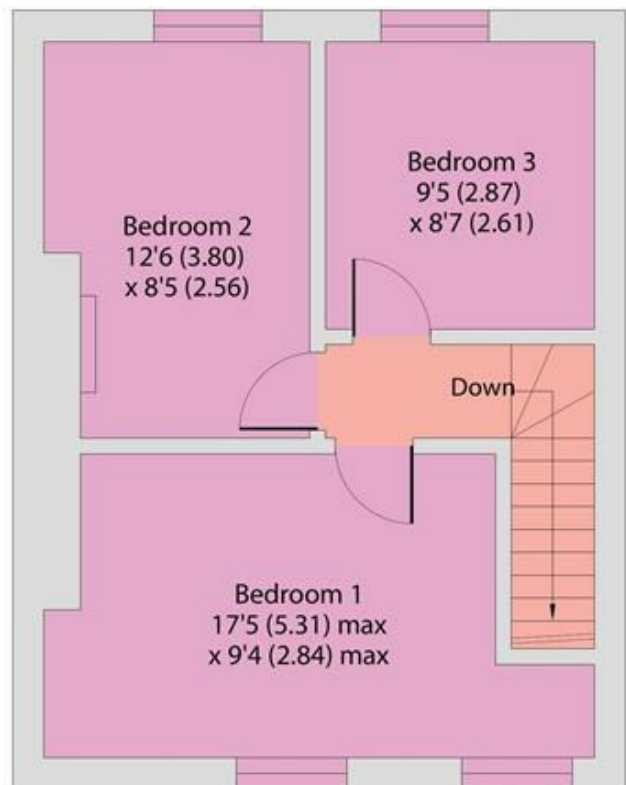
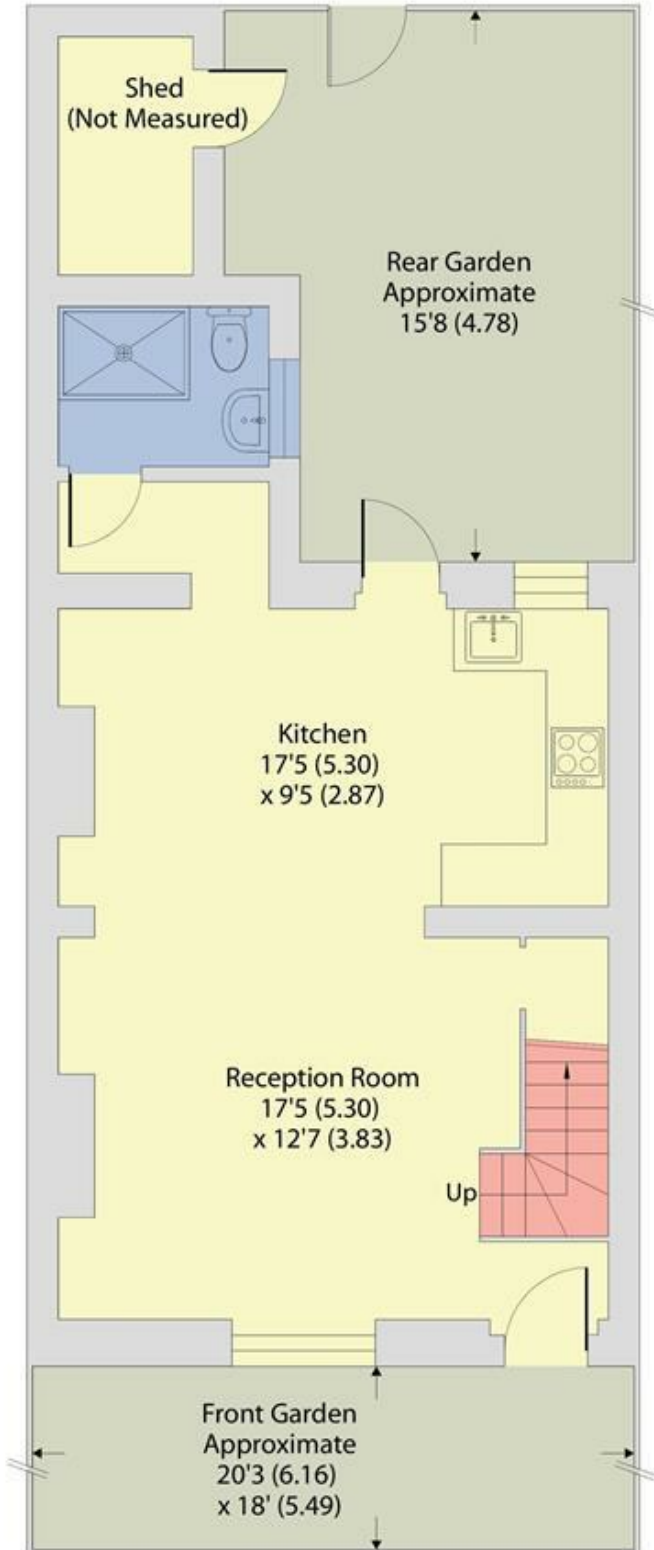
[enquiries@cameronsstiff.co.uk](mailto:enquiries@cameronsstiff.co.uk)

[cameronsstiff.co.uk](http://cameronsstiff.co.uk)

## Needham Terrace, London, NW2

Approximate Area = 848 sq ft / 78.7 sq m

For identification only - Not to scale



**EPC: C**

Ref: 19614595



Floor plan produced in accordance with RICS Property Measurement 2nd Edition, Incorporating International Property Measurement Standards (IPMS2 Residential). Produced for Camerons Stiff & Co. REF: 1400481. © nichecom 2026.

