



The Thatch Thornfalcon, Taunton TA3 5NW



A beautifully presented Grade II Listed detached thatched family house, dating back to the 16th Century, set in mature and private landscaped gardens and grounds extending to 3.85 acres, together with a self-contained one-bedroomed annexe ideal for multi-generational living or incorporation into the main accommodation with car port / workshop / store and ample driveway parking.





Features

- Entrance Hall
- Study
- Living Room with open fire and French doors to garden
- Fitted Kitchen / Breakfast Room with Rangemaster cooker and French doors to garden
- Conservatory with French door to garden
- Utility Room with door to garden
- Cloakroom
- Master Bedroom with Ensuite Shower Room
- 4 further Bedrooms
- Family Bathroom with separate shower

- Annexe – Living Room with inglenook fireplace and woodburner
- Annexe – Kitchen / Dining Room with Belfast sink and oil fired Aga Eco cooker
- Annexe – Utility Room
- Annexe – Double Bedroom with Ensuite Bathroom and Dressing Room with fitted wardrobes

- Mature, private landscaped gardens and grounds extending to 3.85 acres with Koi-Carp pond
- Carport and Store with ample driveway parking
- Oil fired central heating
- Partial double glazing

- Council tax band G

- What3words:
///October.walking.northward







The Thatch is set in a small hamlet within 4.6 miles of Taunton.

Taunton the County town of Somerset is a bustling, forward-looking town with excellent amenities, a good selection of independent and high street shops, distinctive restaurants, cafés, a wealth of history and sporting facilities including the County Cricket Ground.

Taunton benefits from a main line railway station linking to London Paddington in less than 2 hours and excellent communications for the M5 motorway at Junction 25.

For rural pursuits, the Brendon, Blackdown and Quantock Hills lie within easy reach and further West, Exmoor National Park provides excellent walking, riding and cycling.



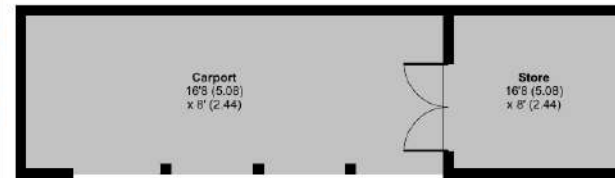
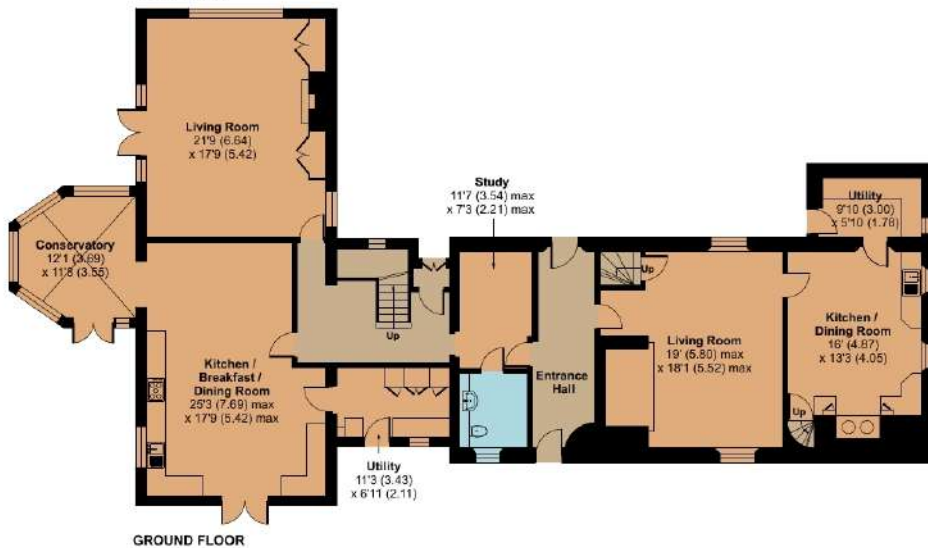
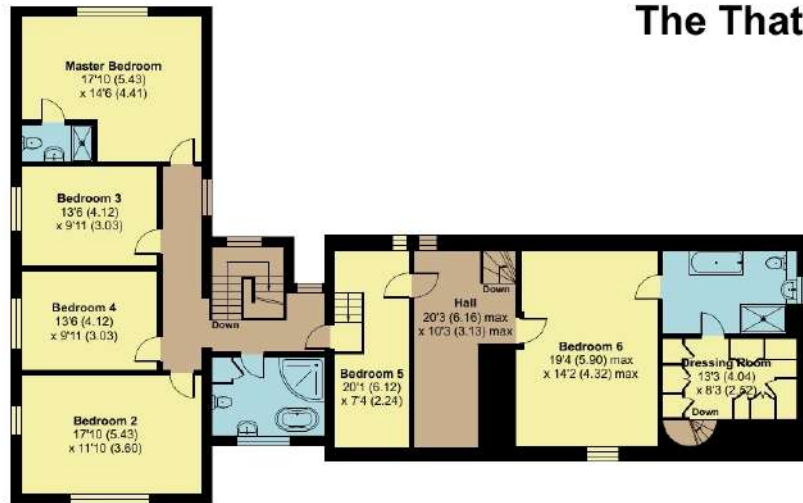
The Thatch, Thornfalcon, Taunton, TA3 5NW

Approximate Area = 4106 sq ft / 381.4 sq m (excludes carport)

Outbuilding = 259 sq ft / 24 sq m

Total = 4365 sq ft / 405.4 sq m

For identification only - Not to scale



Viewing strictly through the selling agents:

Robert Cooney

Corporation Street, Taunton,
Somerset TA1 4AW

Telephone 01823 230 230

E-mail taunton@robertcooney.co.uk

Website robertcooney.co.uk

Floor plan produced in accordance with RICS Property Measurement 2nd Edition, incorporating International Property Measurement Standards (IPMS2 Residential). © nichecom 2026. Produced for Robert Cooney. REF: 1454260

For clarification, we wish to inform prospective purchasers that: these particulars are set out as a general outline only for the guidance of intended purchasers, and do not constitute, nor constitute part of, an offer or contract; all descriptions, dimensions, references to condition and necessary permission for use and occupation, and other details, are given without responsibility and any intending purchasers should not rely on them as statements or representation of fact, but must satisfy themselves by inspection or otherwise as to the correctness of each of them; no person in the employment of Robert Cooney has any authority to make or give any representation or warranty whatever in relation to this property; we have not carried out a detailed survey nor tested the services, appliances and specific fittings.

**robert
cooney**

