



Guide Price
£375,000

Freehold

3x  2x  1x 

**Haydon Close,
Maidstone, Kent ME16**

OVER 60?

Secure this property
for up to **59% less!**

Wards
Helping you move forwards



Main features

- Immaculately presented throughout
- Converted loft with large bedroom
- Parking to the front
- Situated in a quiet cul-de-sac
- Within a short distance to a selection of schools and amenities

Accommodation

GROUND FLOOR

Hallway
 Kitchen: 9'0 x 7'0 (2.75m x 2.14m)
 Cloakroom
 Lounge/Diner: 15'0 x 13'0 (4.58m x 3.97m)

FIRST FLOOR

Landing
 Bedroom 2: 11'0 x 10'0 (3.36m x 3.05m)
 Bedroom 3: 10'0 x 8'0 (3.05m x 2.44m)
 Bathroom

SECOND FLOOR

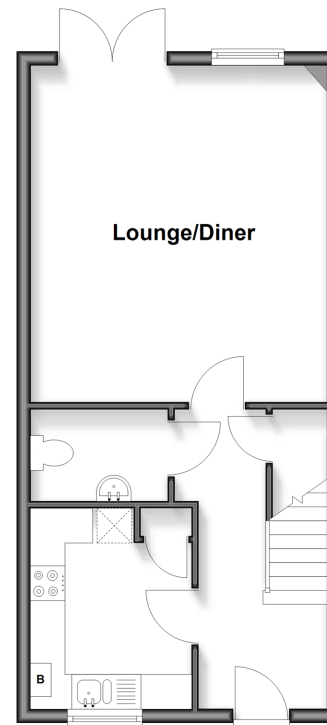
Landing
 Bedroom 1: 23'0 x 13'0 (7.02m x 3.97m)
 En-Suite Shower Room

OUTSIDE

Rear Garden
 Front Garden

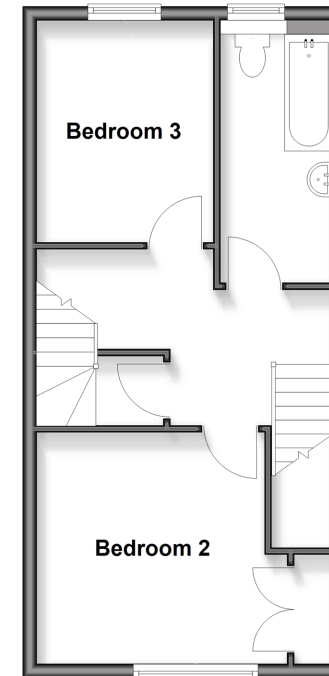
Ground Floor

Approx. 39.7 sq. metres (427.8 sq. feet)



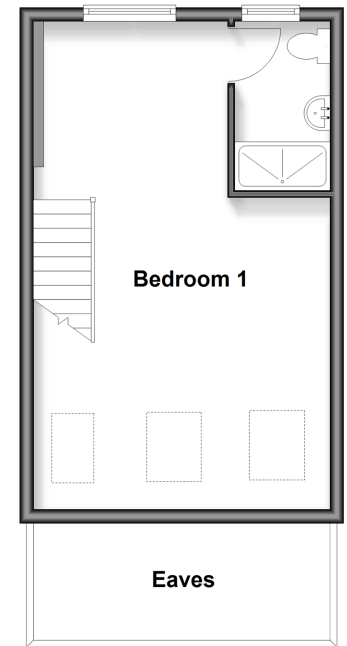
First Floor

Approx. 39.7 sq. metres (427.8 sq. feet)



Second Floor

Approx. 30.1 sq. metres (324.3 sq. feet)



Call Maidstone - 01622 683737 ■ wardsofkent.co.uk

■ Legal advice should be taken to verify fixtures/fittings, planning, alterations and/or lease details
 ■ Through a Homewise Home For Life Plan people aged 60+ can secure this property for up to 59% less, by purchasing a Lifetime Lease

■ Appliances & services are untested, dimensions are approximate and floor plans are not to scale



13159306/20260205/CV/AS