



Portsmouth Road, SW15

£550,000

Dexters



Portsmouth Road, SW15

Set within an attractive period mansion block, this large Two-bedroom apartment offers bright and spacious accommodation throughout that has been renovated to a high standard and fully double glazed by the current owners.

The property features a generous reception/dining room with a wide bay window, flooding the space with natural light and offering ample room for both relaxing and entertaining. There is a separate modern kitchen, two large double bedrooms, and a family bathroom, all arranged off a central hallway. The apartment retains much of the original art-deco features making for a homely feel.

Highlands Heath is ideally positioned on Portsmouth Road, moments from the green open spaces of Putney Heath and close to the amenities of Putney and Barnes. Excellent transport links are available via Putney railway station for direct services into Waterloo, as well as East Putney Underground Station, providing easy access into Central London.

Features

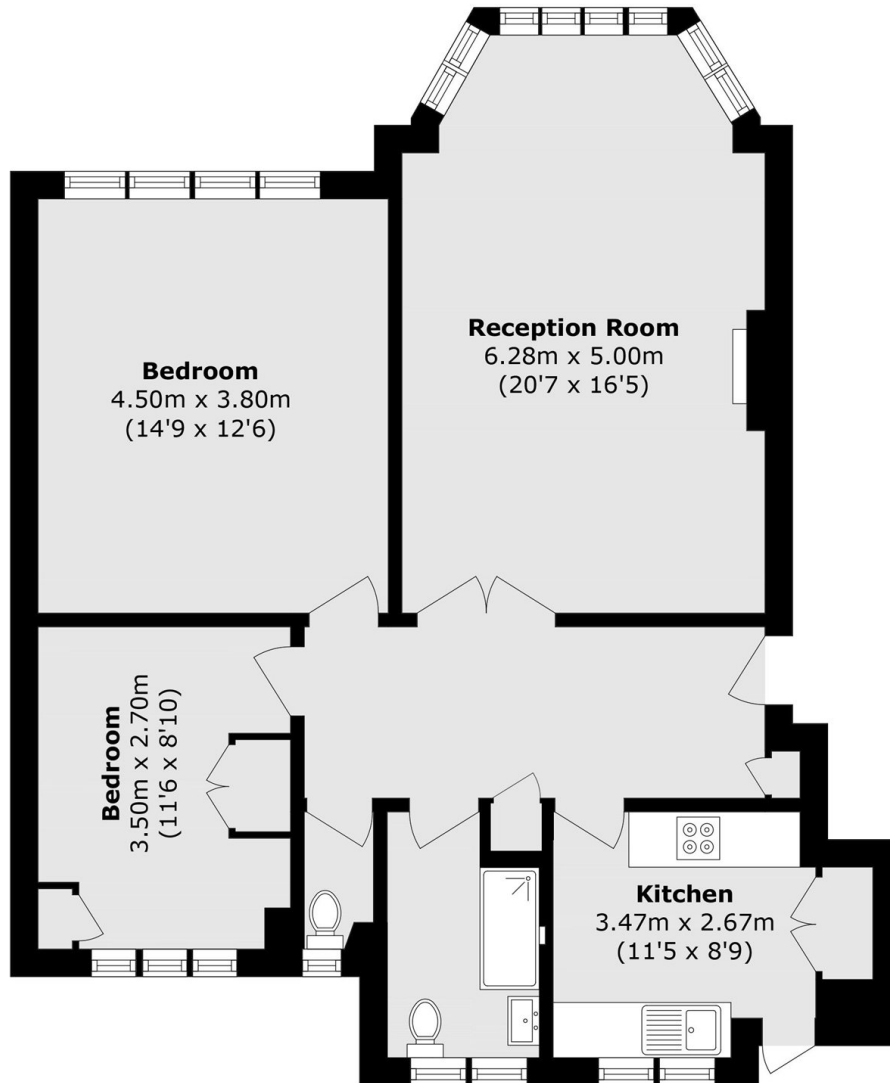
- Two Bedrooms
- One Bathroom
- Share of Freehold
- Tennis and Squash Courts
- Recently Renovated







Portsmouth Road, London, SW15



Total area (approx.): 77.4 sq. m (833.1 sq. ft)