



**Guide Price**  
**£500,000**

**Freehold**

4x  2x  1x 

**Pilgrims Close,  
Snodland, Kent, ME6**

**OVER 60?**

Secure this property  
for up to **59% less!**

*Wards*  
Helping you move forwards



## Main features

- Stunning family home in a great position and ready to move into
- A lovely size and well kept garden
- Super easy parking on arrival plus a garage too
- Fantastic entertaining space plus a beautiful kitchen/diner
- Ideal for families with a cloakroom, en-suite shower room and bathroom

## Accommodation

### GROUND FLOOR

- Entrance Hall
- Cloakroom
- Kitchen/Diner: 17'11 x 11'7 (5.46m x 3.53m)
- Lounge: 20'11 x 12'8 (6.38m x 3.86m)

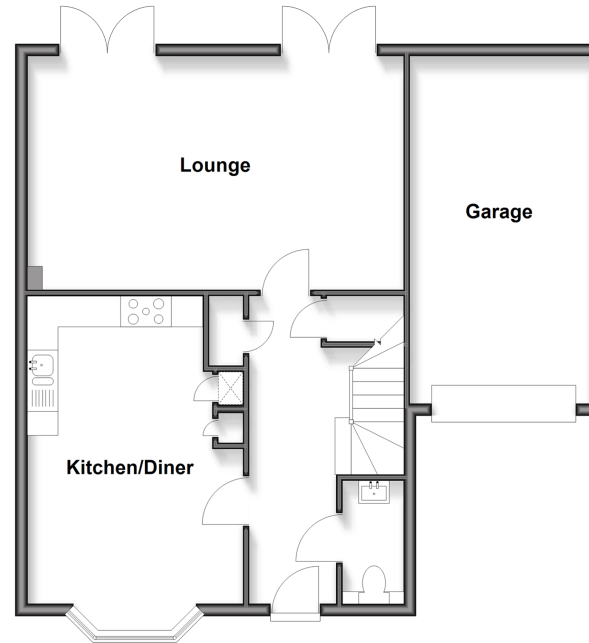
### FIRST FLOOR

- Landing
- Bedroom 1: 13'11 x 9'8 (4.24m x 2.95m)
- En-Suite Shower Room
- Bedroom 2 : 11'7 x 9'8 (3.53m x 2.95m)
- Bedroom 3 : 10'10 x 6'4 (3.30m x 1.93m)
- Bedroom 4 : 8'6 x 6'8 (2.59m x 2.03m)
- Family Bathroom

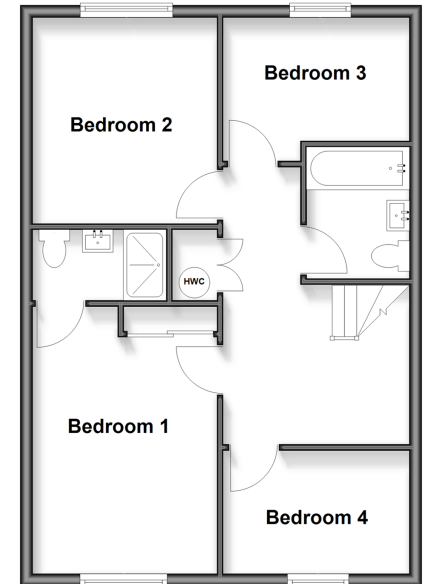
### OUTSIDE

- Front and Rear Gardens
- Garage and Driveway

**Ground Floor**  
Approx. 72.4 sq. metres (779.6 sq. feet)



**First Floor**  
Approx. 55.7 sq. metres (600.0 sq. feet)



Call Snodland - 01634 245055 ■ [wardsof Kent.co.uk](http://wardsof Kent.co.uk)

■ Legal advice should be taken to verify fixtures/fittings, planning, alterations and/or lease details  
 ■ Through a Homewise Home For Life Plan people aged 60+ can secure this property for up to 59% less, by purchasing a Lifetime Lease

■ Appliances & services are untested, dimensions are approximate and floor plans are not to scale



13821905/20260117/CG/LK