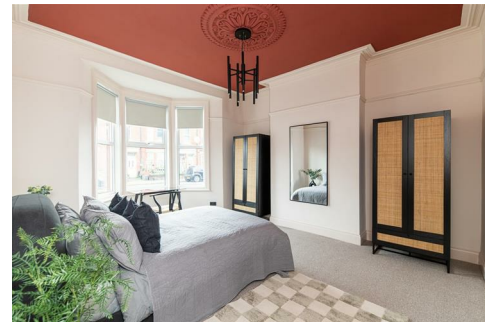




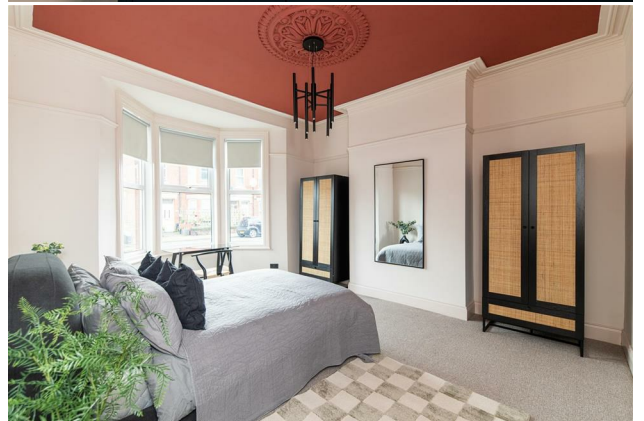
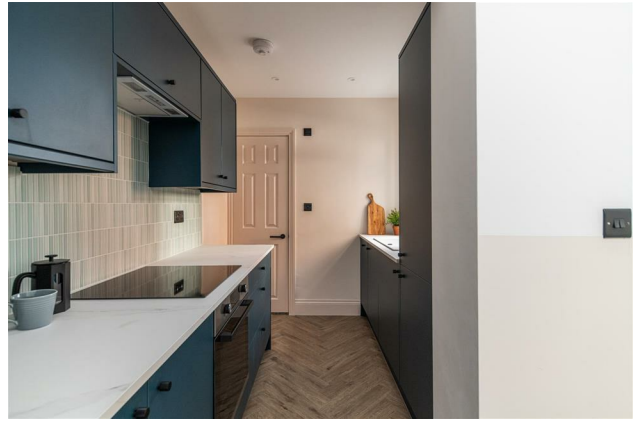
HIVE ESTATES



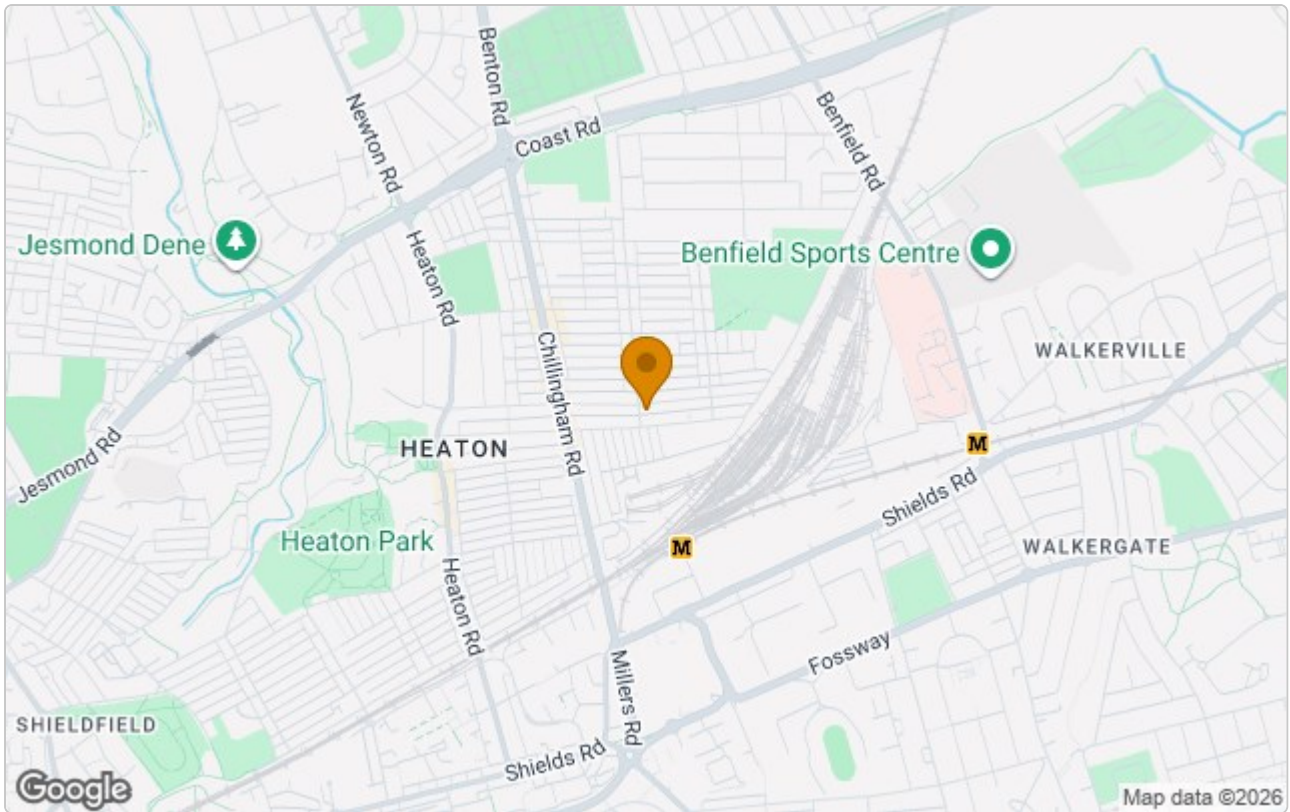
198 Simonside Terrace, Newcastle Upon Tyne, NE6 5DR

£1,300 Per Month

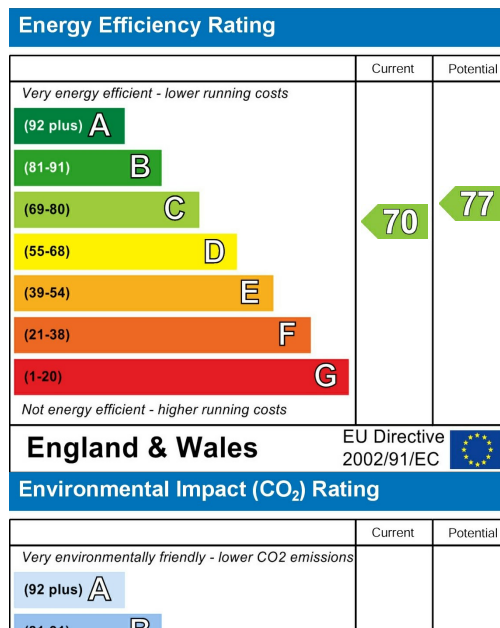
Available August | £1,300 per month | Hive Estates presents to the market a brand new two-bedroom flat on Simonside Terrace, Newcastle Upon Tyne - a stunning location in the sought-after area of Heaton. As you step into this beautifully refurbished property, you are greeted by a spacious open-plan lounge and kitchen area, perfect for entertaining guests or relaxing after a long day. The modern design and brand new furniture in the two double bedrooms offer both comfort and style. The contemporary bathroom with a double shower adds a touch of luxury to this already impressive flat. Externally there is a charming private yard and free on street parking.



Area Map



Energy Efficiency Graph



These particulars, whilst believed to be accurate are set out as a general outline only for guidance and do not constitute any part of an offer or contract. Intending purchasers should not rely on them as statements of representation of fact, but must satisfy themselves by inspection or otherwise as to their accuracy. No person in this firm's employment has the authority to make or give any representation or warranty in respect of the property.