



170 Longmore Road, Shirley

£375,000 Freehold

Modernised 3-bed mid-terrace in Shirley with period features, refitted kitchen, modern bathroom, large garden, conservatory, and driveway parking. Ideal for families or professionals.



HS Homes are delighted to present this beautifully modernised three-bedroom mid-terraced family home, occupying a sought-after position on Longmore Road in Shirley. Combining attractive period features with stylish contemporary upgrades, including a stunning refitted kitchen and modern family bathroom, this charming property offers spacious accommodation, a large private garden and driveway parking, making it an ideal home for families and professionals alike.

From the moment you arrive, you'll appreciate the character and charm this property has to offer. The attractive bay-fronted façade is complemented by a driveway providing off-road parking for two vehicles, whilst inside, a wealth of original features blend seamlessly with the thoughtful improvements made by the current owners.

Upon entering the property, you are welcomed by a bright entrance hallway leading through to the spacious front reception room. Currently utilised as a dining room by the present owners, this attractive bay-fronted space enjoys pleasant views over the driveway and provides an ideal setting for family meals, entertaining guests or could alternatively be used as a formal lounge if preferred.

Positioned to the rear of the property is the main lounge, creating a comfortable and inviting living space that enjoys a close connection to the kitchen and conservatory. This well-proportioned room offers the perfect place to relax and unwind, whilst benefiting from views across the rear garden.

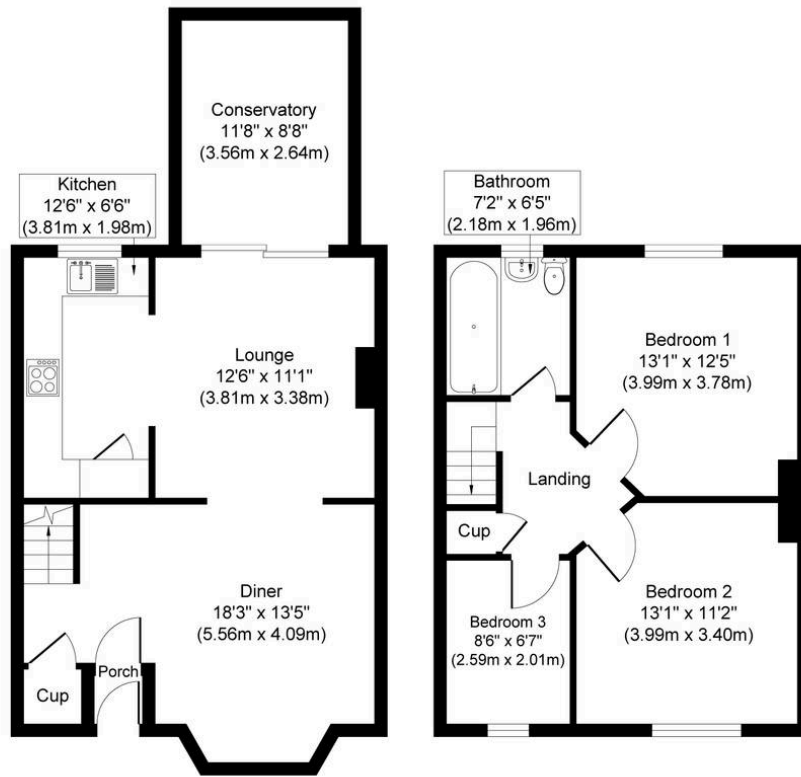
The beautifully refitted kitchen has been thoughtfully modernised to create a stylish and practical space for everyday living, offering a range of contemporary units and work surfaces. Beyond the kitchen, the conservatory provides valuable additional living accommodation and enjoys pleasant views across the garden. Filled with natural light, this versatile room could be utilised as a family room, playroom, home office or simply a peaceful place to relax.

The first floor offers three well-proportioned bedrooms, including two generous double bedrooms and a comfortable third bedroom, all served by a beautifully updated family bathroom featuring contemporary fittings and finishes. From the landing, there is loft access via fold-away steps leading to a fully boarded loft space that spans the full width of the house.

Outside, the property continues to impress with a large private rear garden, providing plenty of space for children to play, summer entertaining, gardening enthusiasts or simply enjoying the outdoors in a peaceful setting.

This wonderful home has been lovingly improved by the current owners and is ready for its next chapter, offering buyers the opportunity to move straight in and enjoy everything it has to offer.





Ground Floor
Approximate Floor Area
1008 sq. ft
(93.34 sq. m)

First Floor
Approximate Floor Area
443 sq. ft
(41.11 sq. m)

Whilst every attempt has been made to ensure the accuracy of the floor plan contained here, measurements of doors, windows, rooms and any other items are approximate and no responsibility is taken for any error, omission, or mis-statement. The measurements should not be relied upon for valuation, transaction and/or funding purposes. This plan is for illustrative purposes only and should be used as such by any prospective purchaser or tenant. The services, systems and appliances shown have not been tested and no guarantee as to their operability or efficiency can be given.

Copyright V360 Ltd 2026 | www.houseviz.com