



Station Road, Radlett, WD7 8JY

£2,350 PCM

We are please to offer for rent this immaculately character house in the centre of Radlett. The property of modern contemporary style offers spacious living space together with a kitchen diner to the rear with French doors opening onto a pretty garden. To the ground floor the house additionally benefits from a guest cloakroom and porch to the front. To the first floor there are two double bedrooms with fitted wardrobes and a large bathroom with bath and separate oversized shower.

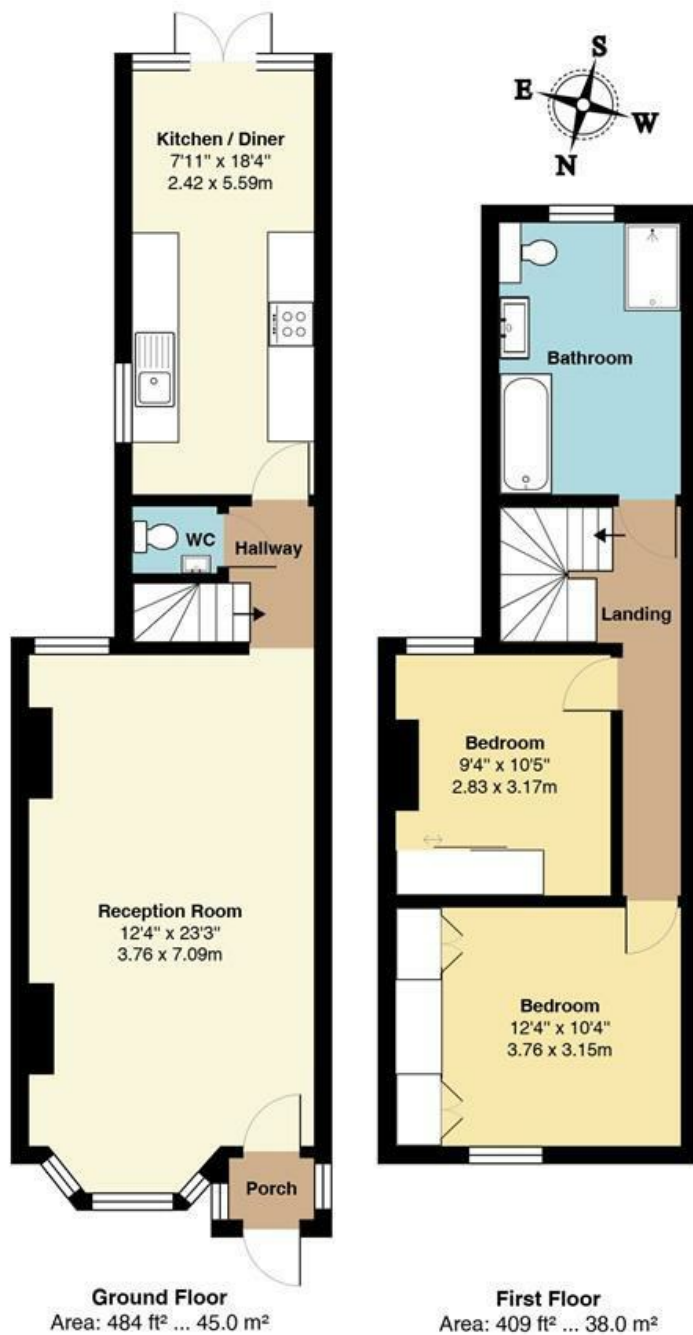
To the rear of the property is a well maintained south facing garden with paved patio area and separate rear access.

The house is located a two minute walk away from the ThamesLink Station which takes you into Central London in under 28 minutes. In addition, being located in the centre of the Village there is easy access to all the local shops & restaurants together with the Radlett Centre, library and doctors surgery.

The house is available from early September

- Two Double Bedroom House
- Contemporary Style
- Immaculately Presented
- Village Centre Location
- Two Minutes from Station
- South Facing Garden
- Available September





Total Area: 893 ft² ... 83.0 m²

All measurements are approximate and for display purposes only

SUSMANS
ESTATES

VIEWING

Strictly by appointment with Susmans Estates

Tel: 01923 859444

299 Watling Street
Radlett
WD7 7LA

E-mail:

office@susmansestates.com

Website:

susmansestates.com

Ref:

