

# Tolcarne Drive

Pinner • • HA5 2DJ  
Asking Price: £800,000



coopers  
est 1986

# Tolcarne Drive

Pinner • • HA5 2DJ

Perfectly positioned just a stone's throw from an outstanding secondary school and only minutes from Northwood Hills Station (Metropolitan Line), this semi-detached house offers the perfect blend of convenience and elegance.

Beautifully maintained and thoughtfully designed, the home boasts generous living spaces, modern finishes, and a warm, inviting atmosphere that makes it ideal for growing families or professionals seeking style and comfort. With its unbeatable location and timeless appeal.

Modern Fitted Bathrooms

Two Reception Rooms

Four Bedrooms

Off Street Parking

Utility Room

Downstairs Shower

Fitted Kitchen

Convenient Location

Semi Detached House

Approx 1,5811 sq .ft

These particulars are intended as a guide and must not be relied upon as statements of fact. Your attention is drawn to the Important Notice on the last page.





### Description

Step inside and you're greeted by a bright and welcoming reception room, ideal for cosy evenings or entertaining guests. Moving through, the home opens up into a stylish dining room and a stunning extended kitchen, filled with natural light and designed as the heart of the home — perfect for family meals and gatherings. From here, French doors lead directly onto a generous garden, creating a seamless flow between indoor and outdoor living.

Also on the ground floor, you'll find a versatile study area, a practical utility room, and a well-proportioned bedroom with its own access to a shower room — offering flexible use for guests, older children, or even as a private workspace.

Upstairs, three further bedrooms provide plenty of space for the whole family. The principal bedroom is bright and inviting, while the additional double and single bedrooms are perfect for children, guests, or a home office. A modern family bathroom completes the first floor.

### Outside

Outside, the home boasts a large garden, perfect for al fresco dining or simply relaxing, along with a handy outbuilding that can be versatile. The property also includes a large front driveway.

### Location

Tolcarne Drive sits in a leafy, sought-after pocket of Pinner, offering the perfect mix of suburban peace and everyday convenience. Just a short stroll from Northwood Hills Station (Metropolitan Line) and within easy reach of Pinner High Street, enjoy boutique shops, cafés, pubs, and green spaces like Pinner Memorial Park. Families are particularly drawn to the area thanks to its excellent schools, including the outstanding Northwood School and Pinner Wood Primary.



### Schools:

Northwood School 0.5 miles  
Pinner Wood School 0.5 miles  
Harlyn Primary School 0.1 miles



### Train:

Northwood Hills Station 0.4 miles  
Pinner Station 0.8 miles  
Eastcote Station 1.4 miles



### Car:

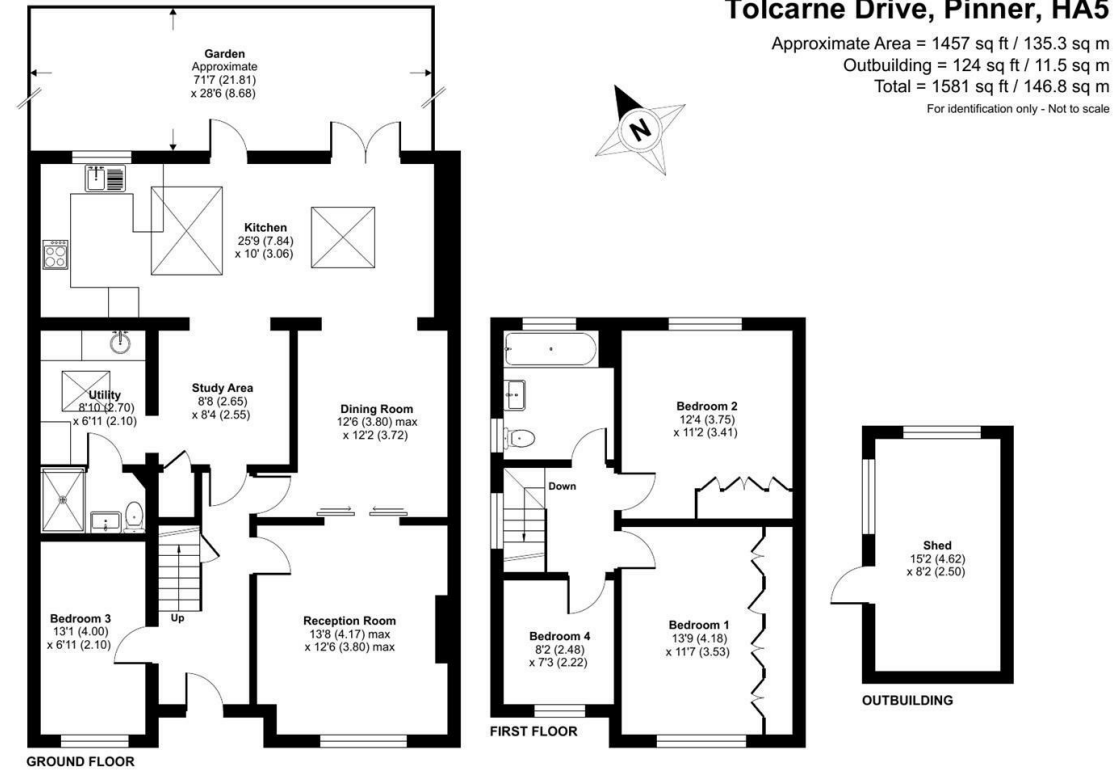
M4, A40, M25, M40



### Council Tax Band:

E

(Distances are straight line measurements from centre of postcode)

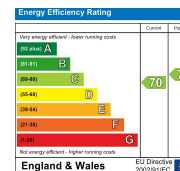


Floor plan produced in accordance with RICS Property Measurement 2nd Edition, incorporating International Property Measurement Standards (IPMS2 Residential). © nichecom 2025. Produced for Coopers. REF: 1342464



0208 017 6000  
18 Bridge Street, Pinner,  
Middlesex, HA5 3JF  
pinner@coopersresidential.co.uk

CoopersResidential.co.uk



Important Notice: These particulars, whilst believed to be accurate are set out as a general outline only for guidance and do not constitute any part of an offer or contract. Intending purchasers should not rely on them as statements or representation of fact, but must satisfy themselves by inspection or otherwise has the authority to make or give any representation or warranty in respect of the property.