

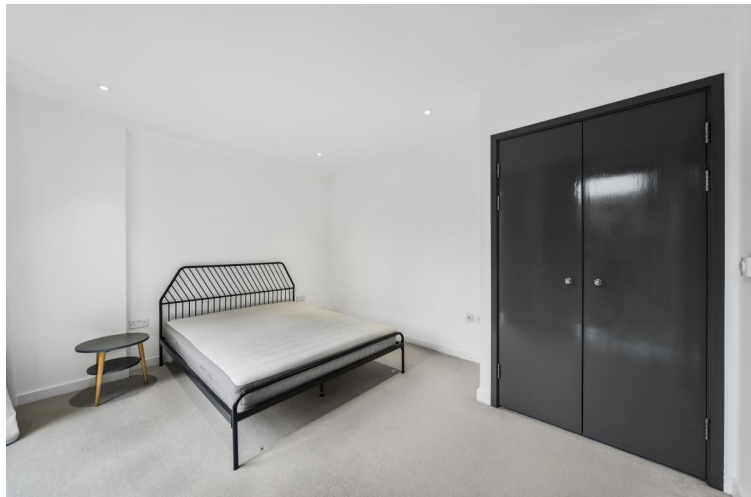


Goldsmiths Row, London E2

Price £595 per week - Furnished







Description

A contemporary 1 bedroom apartment in the popular Mettle & Poise, E2.

This spacious 1 bedroom apartment boasts approximately 639 sq ft of living space and is offered on a furnished basis. This stunning 1 bedroom apartment comprises a living area with open plan fitted kitchen and integrated Siemens appliances, large balcony, spacious bedroom with fitted wardrobes, contemporary bathroom, Amtico flooring and excellent storage space.

The development boasts an excellent location, next to Hackney City farm and Haggerston Park and close to London Fields. Mettle and Poise is also well connected for the City and is a short walk (0.4 miles) from Hoxton Overground station.

Council tax band: C. Rent is payable on a monthly basis, and you may be required to pay more than a month's rent in advance for tenancies with annual rents exceeding £100,000. You will be required to pay a 1 week holding deposit following a successful offer. Tenancies with annual rents up to £50,000 will require a 5 weeks' security deposit, while those exceeding this threshold will require a 6 weeks' deposit. Utility bills, council tax, telephone line and broadband are not included in the rent. As well as paying the rent, you may also be required to make some additional permitted payments. If your tenancy does not qualify as an APT, additional fees may apply. Please visit jll.co.uk/fees for details of fees that may be payable when renting a property. To check broadband and mobile phone coverage please visit Ofcom here ofcom.org.uk/phones-telecoms-and-internet/advice-for-consumers/advice/ofcom-checker

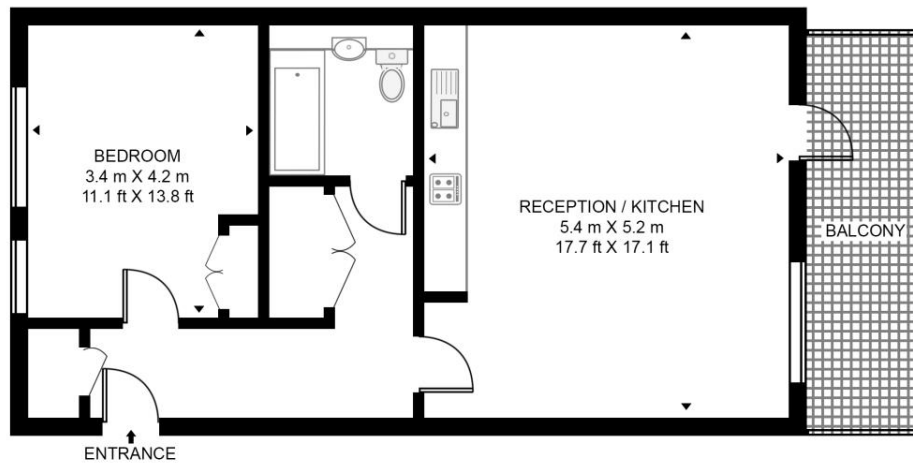
- 1 Bedroom
- 1 Bathroom
- Large balcony
- Open plan kitchen with Siemens appliances
- 0.4 miles from Hoxton Overground station
- Approx. 639 sq ft (59.4 sq m)
- Furnished
- EPC: B
- Council tax: Band C
- Deposit amount: £2,975

Floorplan

639 sq ft | 59 sq m

CHARLOTTE KING COURT, 34 GOLDSMITH ROW

APPROXIMATE GROSS INTERNAL FLOOR AREA 639 SQ.FT (59.4 SQ.M)



SECOND FLOOR



This floor plan has been defined by the RICS Code of Measurement. This floor plan and all others are for approximate representative purposes only and upon usage is agreed to as such by the client.
WWW: hdvirtualart.com | TEL: 0203.974.1567 | EMAIL: info@hdvirtualart.com

City
25 Walbrook The Walbrook
Building,
London EC4N 8AF
+4420 7337 4000

Urban living, your way.

jll.co.uk/residential

© 2019 Jones Lang LaSalle IP, Inc. All rights reserved. All information contained herein is from sources deemed reliable; however, no representation or warranty is made to the accuracy thereof.

